

YAMAHA



**PARTS  
CATALOGUE**

**TT250R'96 (4MR2) ENGLAND**

---

**YAMAHA**  
GENUINE  
PARTS

254MR010E1

YAMAHA



**PARTS  
CATALOGUE**

**TT250R'96 (4MR2) ENGLAND**

---

**YAMAHA**  
GENUINE  
PARTS & ACCESSORIES

204MR-310E1

42

## FOREWORD

This Parts Catalogue is related to the parts for the model(s) in the below frame. When you are ordering replacement parts, please refer to this Parts Catalogue and quote both part numbers and part names correctly.

YF250P\*96(4MR2)

1. Modifications or additions which have been made after issue of the Parts Catalogue will be announced in the Yamaha Parts News. It is advisable that you make necessary corrections to the Parts Catalogue according to the Yamaha Parts News.

**2 Abbreviations**

The following abbreviations are used in this Parts Catalogue.

- "UR" Use specified parts number.
- "UN" Use as many as needed.
- "AP" Alternate Parts
- "LM" Local Made (Parts need to be ordered locally)
- "FR" Frame No. (Applicable machine No.)

3. Parts, which are to be supplied in an assembly, are listed with a dot (.) in front of the part name as shown below.

EXAMPLE  
 CARBURETOR ASSY  
 . JET, PILOT  
 . NOZZLE, MAIN

4. Number of component for assembly  
 The numeral appearing to the right of each component part indicates the quantity of parts for each assembly unit.

**EXAMPLE**

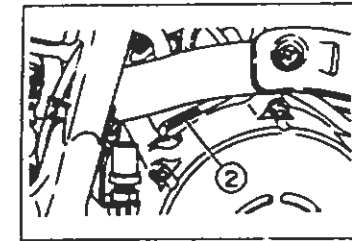
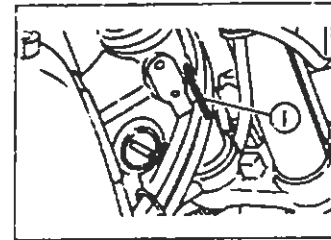
PART NO.	DESCRIPTION	Q'TY	REMARKS
ZFS-83310-60	FRONT FLASHER LIGHT ASSY	2	
115-83311-60	BULB (6V-18W)	1	

5. Applicable colors or graphics are represented in the "REMARKS" as shown below.

PART NO.	DESCRIPTION	Q'TY	REMARKS
2N4-24110-00-X5	FUEL TANK COMP.	1	MAXIM RED
3J1-24240-10	GRAPHIC, FUEL TANK	1	for MXR

**Applicable Serial No. and Color Code**

① Frame Serial No.	4MR-002101	~
② Engine Serial No.	4MR-002101	~



Color Code	Color Name	Abbreviation
0206	PURPLISH-WHITE SOLID 1	PWS1

7. Note that the illustrations are for reference in finding parts numbers, not to be used for assembling. When assembling, please use the applicable service manual.
8. The asterisk (\*) before a reference number indicates modification items after the first edition.

A3

# CONTENTS

## ENGINE

Cylinder Head.....	B2
Cylinder.....	B3
Crankshaft Piston.....	B4
Valve.....	B5~B6
Camshaft Chain.....	B7
Oil Pump.....	B8
Intake.....	B9~B10
Carburetor.....	B11~B12
Exhaust.....	B13
Crankcase.....	B14
Crankcase Cover 1.....	B15~C2
Starter Clutch.....	C3
Clutch.....	C4
Transmission.....	C5
Shift Cam Fork.....	C6
Shift Shaft.....	C7

## CHASSIS

Frame.....	C8~C9
Fender.....	C10
Side Cover.....	C11
Rear Arm.....	C12~C13
Rear Suspension.....	C14
Steering.....	C15~D2
Front Fork.....	D3~D5
Fuel Tank.....	D6
Seat.....	D7
Front Wheel.....	D8
Front Brake Caliper.....	D9

Rear Wheel.....	D10
Rear Brake Caliper.....	D11
Steering Handle Cable.....	D12
Front Master Cylinder.....	D13
Stand Footrest.....	D14
Rear Master Cylinder.....	D15
Generator.....	E2
Starting Motor.....	E3
Flasher Light.....	E4
Meter.....	E5
Headlight.....	E6
Taillight.....	E7
Handle Switch Lever.....	E8
Electrical 1.....	E9~E10
Electrical 2.....	E11

## INDEX

Numerical Index.....	M1~M4
----------------------	-------



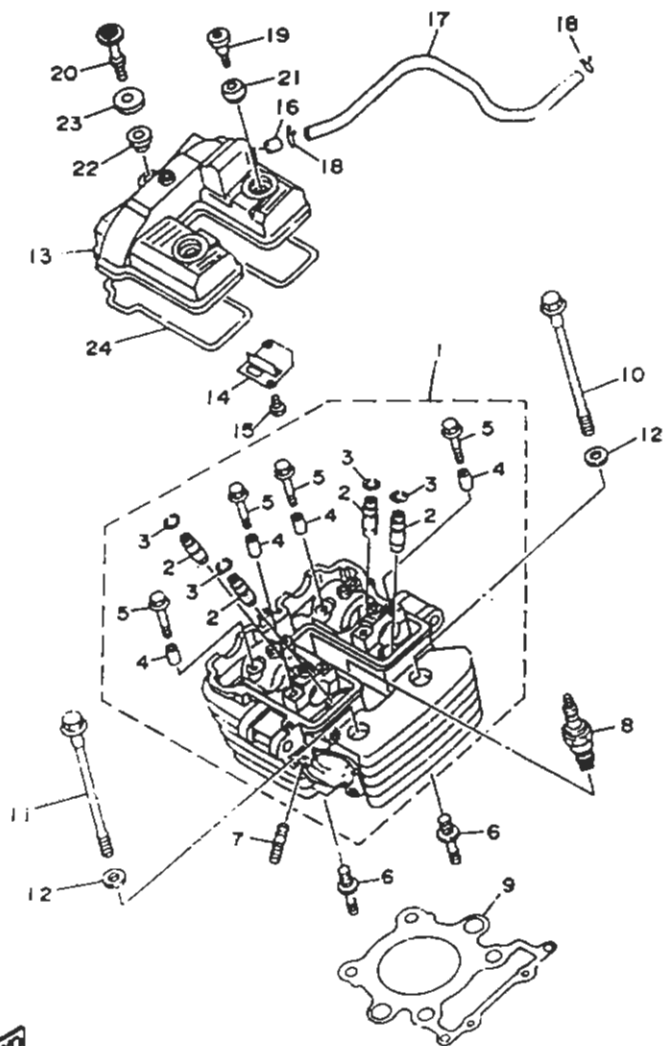


FIG. 1 CYLINDER HEAD

REF. NO.	PART NO.	DESCRIPTION	QTY	REMARKS
1	4GY-11102-01	CYLINDER HEAD ASSY	1	
2	4GY-11133-10	GUIDE, INTAKE VALVE	4	
3	93440-09141	CIRCULAR CLIP	4	
4	99510-08016	PLAIN DOWEL	8	
5	90105-06384	BOLT, WASHER BASED	8	
6	90116-10579	BOLT, STUD	1	
7	95617-08325	BOLT, STUD	2	
8	94701-00319	PLUG, SPARK (INDUCTION)	1	UR
	94701-00318	PLUG, SPARK (INDUCTION)	1	UR
9	4GY-11181-00	GASKET, CYLINDER HEAD 1	1	
10	90105-10608	BOLT, WASHER BASED	3	
11	90105-10745	BOLT, WASHER BASED	1	
12	90201-10269	WASHER, PLATE	4	
13	4RR-11191-00	COVER, CYLINDER HEAD 1	1	
14	4RR-11165-01	PLATE, BREATHER	1	
15	98507-05010	SCREW, PAN HEAD	2	
16	59V-11167-00	PIPE, BREATHER 2	1	
17	4RR-11166-00	PIPE, BREATHER 1	1	
18	90467-12052	CLIP	2	
19	90109-06670	BOLT	1	
20	90109-06605	BOLT	1	
21	48R-11110-09	RUBBER, MOUNT 1	2	
22	2GM-11116-00	RUBBER, MOUNT 2	1	
23	90209-11261	WASHER	1	
24	4GY-11193-00	GASKET, HEAD COVER 1	1	

4MR2310-6010

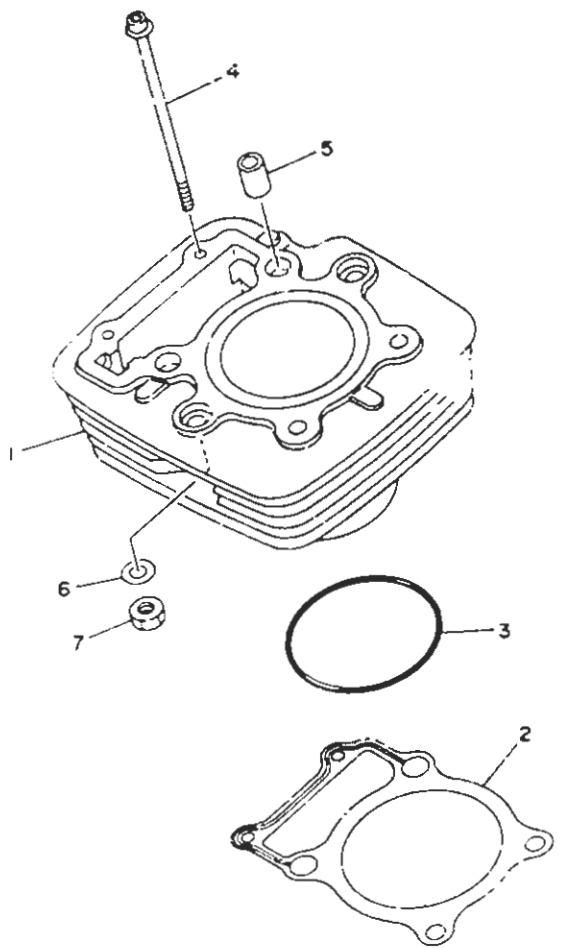


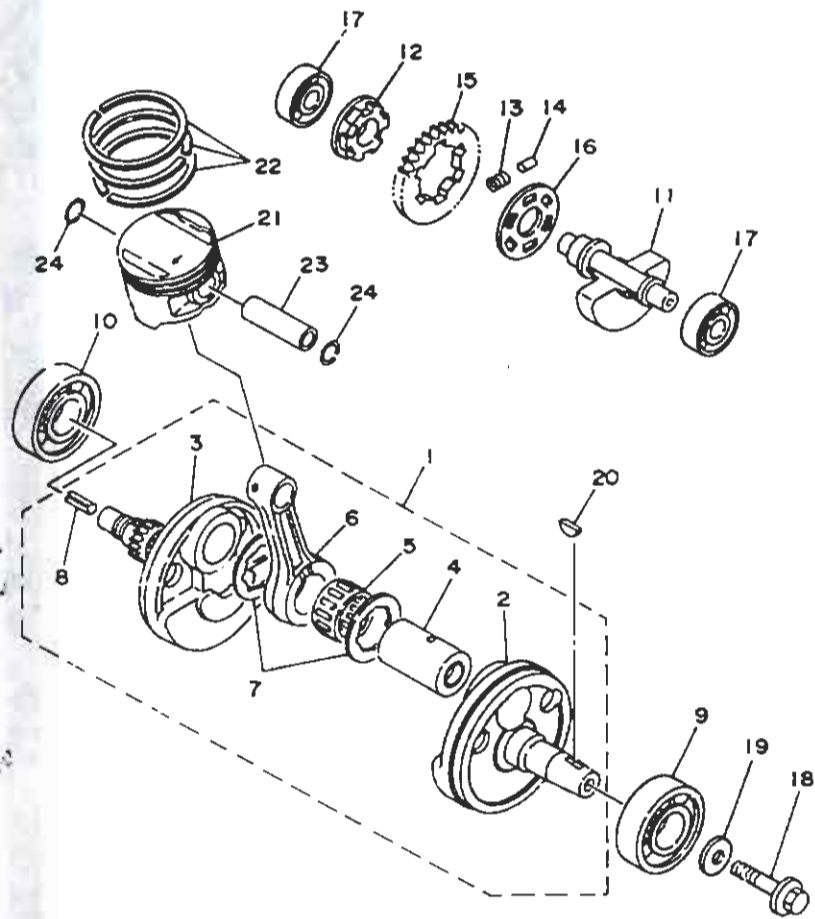
FIG. 2 CYLINDER

REF. NO.	PART NO.	DESCRIPTION	Q'TY	REMARKS
1	4GY-11310-00	CYLINDER	1	
2	4GY-11351-00	GASKET, CYLINDER	1	
3	9321G-78544	O-RING	1	
4	90105-06406	BOLT, WASHER BASED	2	
5	99530-14016	PIN, DOWEL	2	
6	90201-094G1	WASHER, PLATE	2	
7	95337-08600	NUT	2	



4GY10-G-3020

**B3**



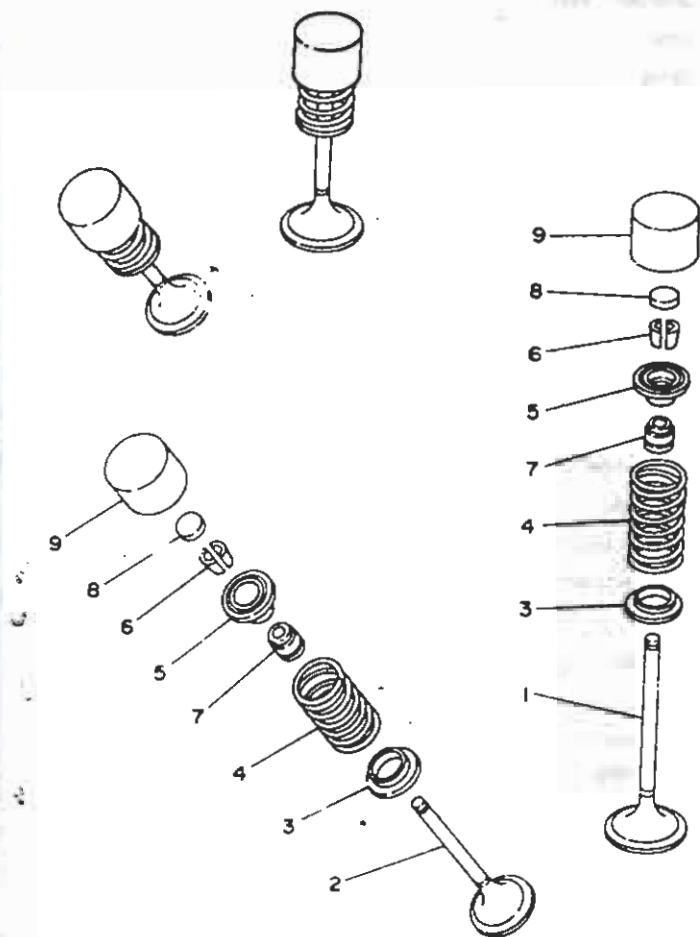
4GY1010-3030

FIG. 3 CRANKSHAFT. PISTON

REF. NO.	PART NO.	DESCRIPTION	Q'TY	REMARKS
1	4GY-11400-00	CRANKSHAFT ASSY	1	
2	4GY-11412-00	.CRANK 1	1	
3	4GY-11142-00	.CRANK 2	1	
4	4GY-11681-00	.PIN, CRANK 1	1	
5	93310-63207	.BEARING, CYLINDRICAL	1	
6	4GY-11651-00	.ROD, CONNECTING	1	
7	90209-32328	.WASHER	2	
9	90254-07017	.PIN, SPRING	1	
9	93306-37804	BEARING	1	
10	93306-37802	BEARING	1	
11	4GY-11454-00	WEIGHT 1	1	
12	4GY-11492-00	BOSS, BUFFER	1	
13	90501-22721	SPRING, COMPRESSION	6	
14	93605-1009C	PIN, DOWEL	3	
15	4GY-11531-00	GEAR, BALANCE WT	1	
16	4GY-11533-00	PLATE, ABSORBER	1	
17	93306-30210	BEARING	2	
18	90105-10430	BOLT, WASHER BASED	1	
19	90201-102R1	WASHER, PLATE	1	
20	90280-16053	KEY, WOODRUFF	1	
21	4GY-11631-00-00	PISTON (STD)	1	
	4GY-11636-00	PISTON (0.50MM O/S)	1	AP
	4GY-11638-00	PISTON (0.70MM O/S)	1	AP
22	4GY-11603-00	PISTON RING SET (STD)	1	
	4GY-11605-00	PISTON RING SET (0.50MM O/S)	1	AP
	4GY-11607-00	PISTON RING SET (1.00MM O/S)	1	AP
23	30X-11633-03	PIN, PISTON	1	
24	93450-19052	CIRCLIP	2	

B4

FIG. 4 VALVE



REF. NO.	PART NO.	DESCRIPTION	Q'TY	REMARKS
1	4GT-12111-00	VALVE, INTAKE	2	
2	4GY-12121-00	VALVE, EXHAUST	2	
3	2GH-12116-00	SEAT, VALVE SPRING	4	
4	4GT-12113-00	SPRING, VALVE INNER	4	
5	4GY-12117-00	RETAINER, VALVE SPRING	4	
6	1AA-12118-00	COTTER, VALVE	8	
7	33M-12119-00	SEAL, VALVE STEM	4	
8	3LD-12168-00	PAD, ADJUSTING (1.20)	4	UR
	3LD-12168-20	PAD, ADJUSTING (1.25)	4	UR
	3LD-12168-40	PAD, ADJUSTING (1.30)	4	UR
	3LD-12168-60	PAD, ADJUSTING (1.35)	4	UR
	3LD-12168-80	PAD, ADJUSTING (1.40)	4	UR
	3LD-12168-A0	PAD, ADJUSTING (1.45)	4	UR
	3LD-12168-FC	PAD, ADJUSTING (1.50)	4	UR
	3LD-12168-H1	PAD, ADJUSTING (1.55)	4	UR
	3LD-12168-K1	PAD, ADJUSTING (1.60)	X 2	4 UR
	3LD-12168-M1	PAD, ADJUSTING (1.65)	4	UR
	3LD-12168-R1	PAD, ADJUSTING (1.70)	X 1	4 UR
	3LD-12168-U1	PAD, ADJUSTING (1.75)	X 1	4 UR
	3LD-12168-W1	PAD, ADJUSTING (1.80)	4	UR
	3LD-12168-Y1	PAD, ADJUSTING (1.85)	4	UR
	3LD-12169-11	PAD, ADJUSTING (1.90)	4	UR
	3LD-12169-31	PAD, ADJUSTING (1.95)	1	UR
	3LD-12169-50	PAD, ADJUSTING (2.00)	4	UR
	3LD-12169-70	PAD, ADJUSTING (2.05)	4	UR
	3LD-12169-90	PAD, ADJUSTING (2.10)	4	UR
	3LD-12169-ED	PAD, ADJUSTING (2.15)	4	UR
	3LD-12169-G0	PAD, ADJUSTING (2.20)	4	UR

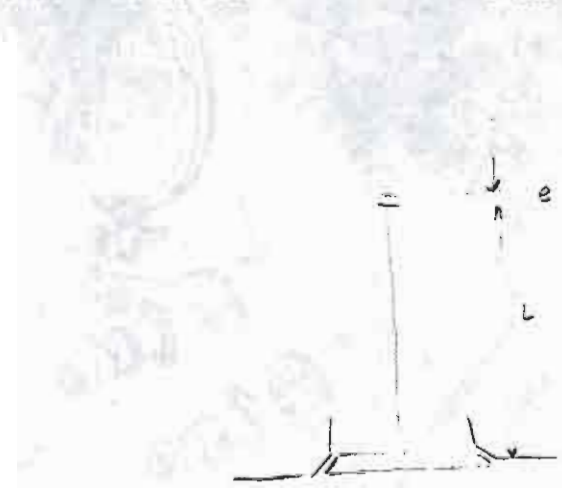
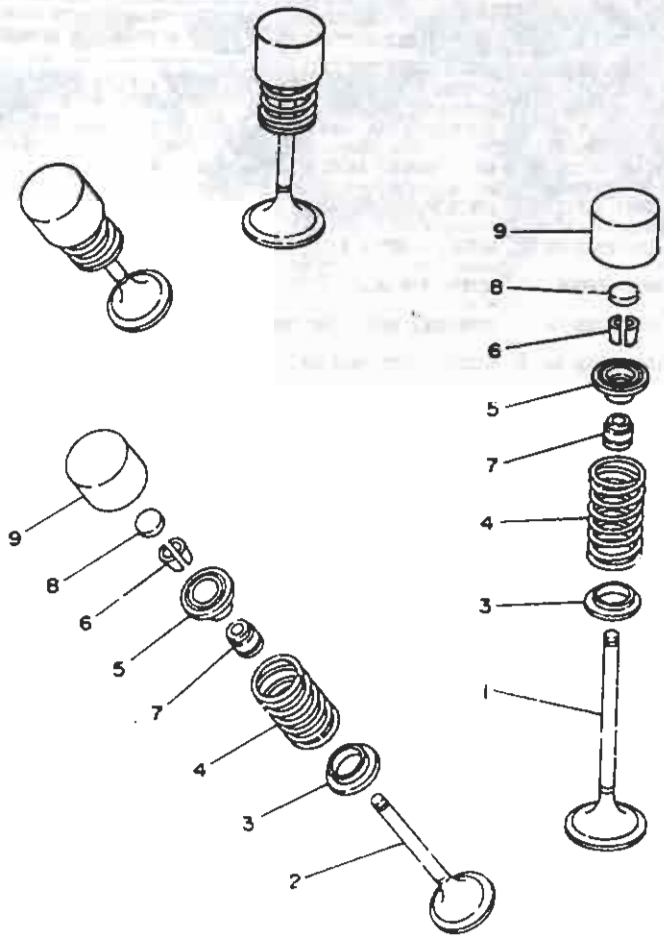
4GY1010-3040

**B5**



FIG. 4 VALVE

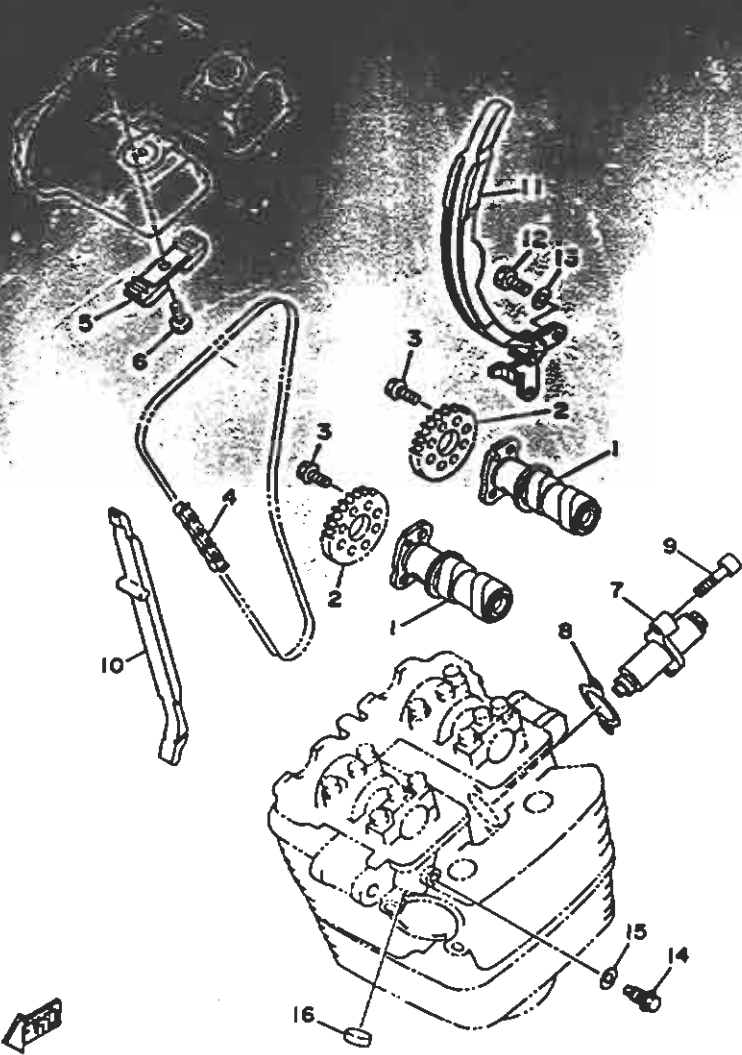
REF. NO.	PART NO.	DESCRIPTION	Q'TY	REMARKS
8	3LD-12169-30	PAD, ADJUSTING (2.25)	4	UR
	3LD-12169-L0	PAD, ADJUSTING (2.30)	4	UR
	3LD-12169-N0	PAD, ADJUSTING (2.35)	4	UR
	3LD-12169-70	PAD, ADJUSTING (2.40)	4	UR
9	1WG-12153-21	LIFTER, VALVE	4	UR BLUE
	1WG-12153-31	LIFTER, VALVE	4	UR RED



AD-  
 3cu = 0,09 - 0,1  
 0,19  
 Ed.  
 3cu = 0,19  
 0,27 0,2

40Y1010-304C

B6

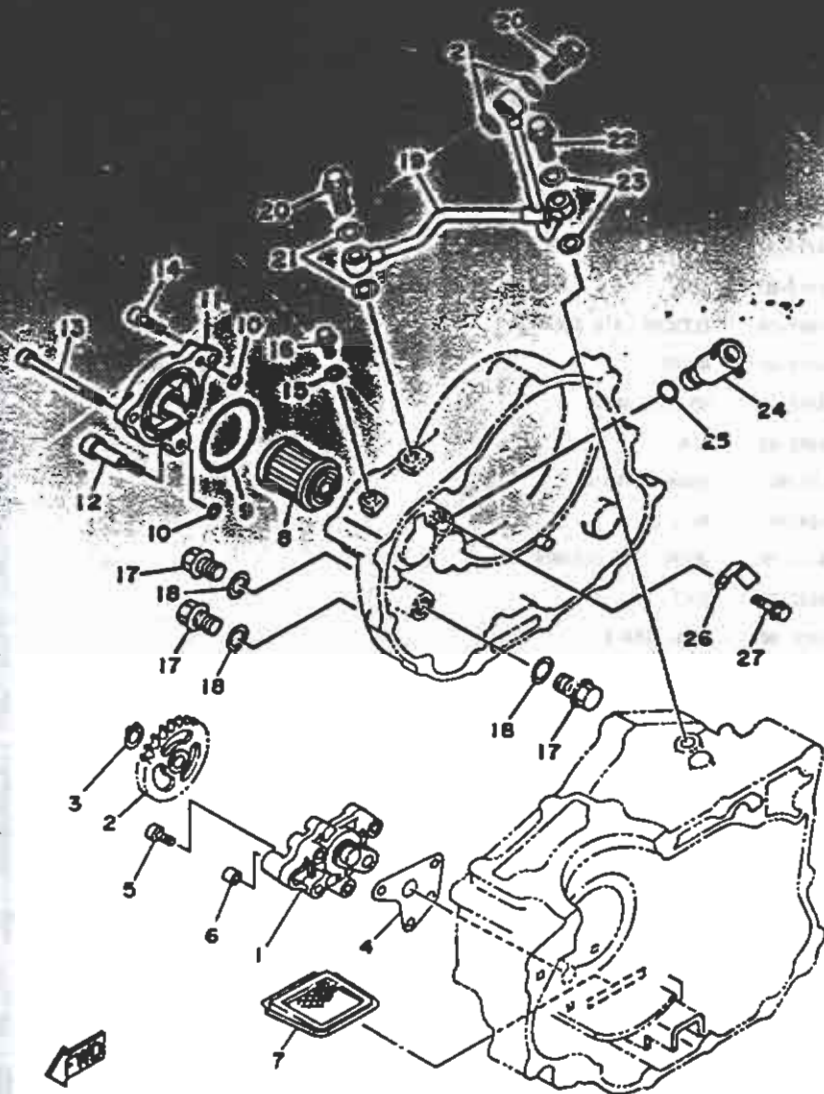


4GY1010-3050

REF. NO.	PART NO.	DESCRIPTION	Q'TY	REMARKS
1	511-12171-00	CAMSHAFT	2	
2	46Y-12176-00	SPROCKET, CAM CHAIN	2	
3	90109-07305	BOLT, WASHER BASED	4	
4	94591-43122	CHAIN	1	
5	46Y-12241-00	GUIDE, STOPPER 2	1	
6	98507-06008	SCREW, PAN HEAD	1	
7	36C-12210-10	TENSIONER ASSY, CAM CHAIN	1	
8	49E-12213-00	GASKET, TENSIONER CASE	1	
9	91317-06025	BOLT	2	
10	46Y-12251-00	DAMPER, CHAIN 1	1	
11	46Y-12252-00	DAMPER, CHAIN 2	1	
12	97017-06016	BOLT	2	
13	92907-06603	WASHER, PLATE	2	
14	90109-06418	BOLT	1	
15	90430-06014	GASKET	1	
16	90338-13067	PLUG	1	

B7



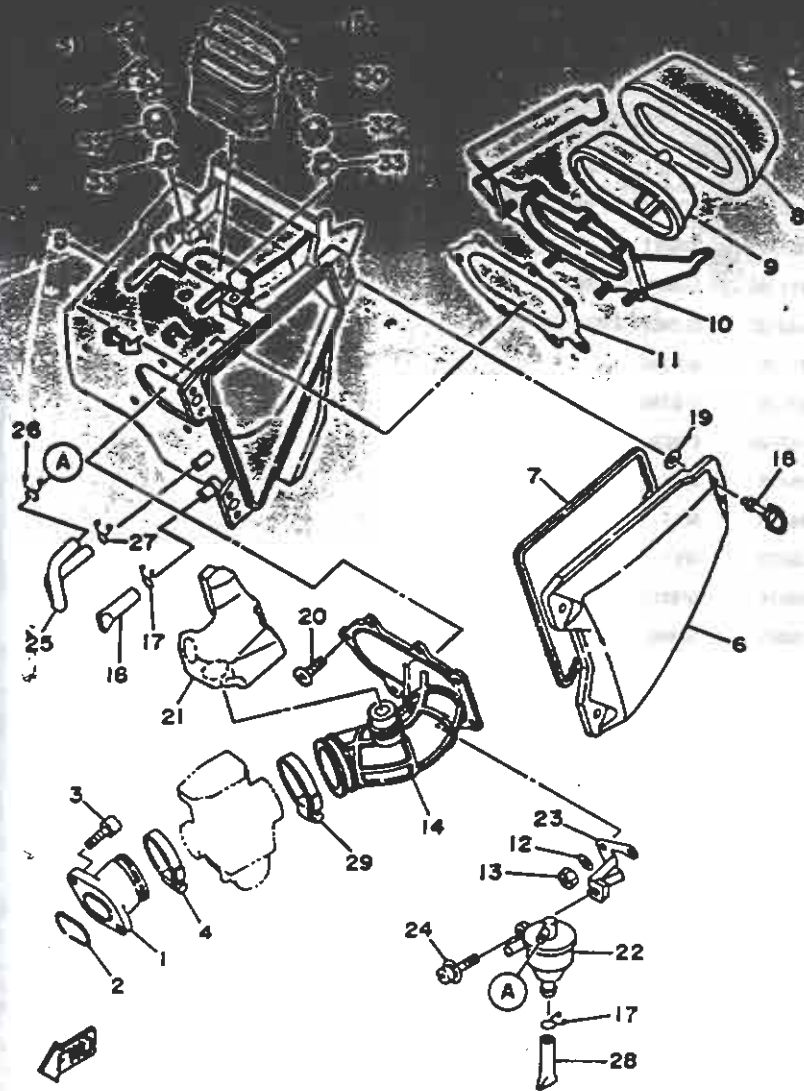


4MR2310-6060

FIG. 6 OIL PUMP

REF. NO.	PART NO.	DESCRIPTION	Q'TY	REMARKS
1	4GY-13200-00	OIL PUMP ASSY	1	
2	4GY-13325-00	GEAR, PUMP DRIVEN 2	1	
3	99009-11400	CIRCLIP	1	
4	4GY-13329-00	GASKET, PUMP COVER	1	
5	98507-06035	SCREW, PAN HEAD	3	
6	90430-06156	GASKET	1	
7	22F-13417-00	STRAINER, OIL	1	
8	1LY-13440-02	ELEMENT ASSY, OIL CLEANER	1	
9	93210-54175	O-RING	1	
10	93210-07135	O-RING	2	
11	4GY-13447-90	COVER, OIL ELEMENT	1	
12	90109-06019	BOLT	1	
13	91317-06070	BOLT	1	
14	91317-06020	BOLT	1	
15	90430-06014	GASKET	1	
16	90153-06045	SCREW, HEXAGON	1	
17	90340-12065	PLUG, STRAIGHT SCREW	3	
18	90430-12213	GASKET	3	
19	4GY-13161-00	PIPE, DELIVERY 1	1	
20	90401-10159	BOLT, UNION	2	
21	90430-10171	GASKET	4	
22	90401-08133	BOLT, UNION	1	
23	90201-08087	WASHER, PLATE	2	
24	4GY-13490-00	RELIEF VALVE ASSY	1	
25	93210-10096	O-RING	1	
26	4GY-13151-00	STAY	1	
27	50105-06553	BOLT, WASHER BASED	1	

B8

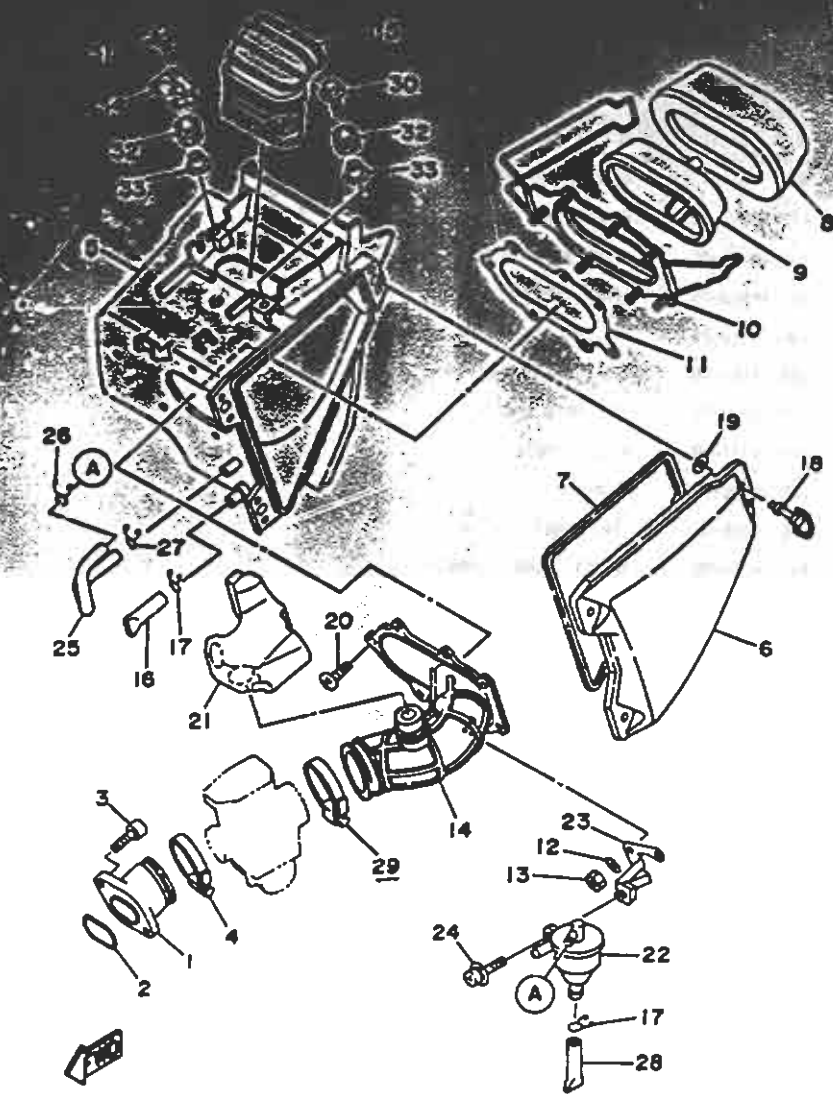


46Y1010-3070

REF. NO.	PART NO.	DESCRIPTION	Q'TY	REMARKS
1	46Y-13595-00	JOINT, CARBURETOR	1	
2	93210-60659	O-RING	1	
3	97317-06020	BOLT	2	
4	90460-52210	CLAMP, HOSE	1	
5	46Y-14401-00	AIR CLEANER CASE ASSY	1	
6	46Y-14412-00	CAP, CLEANER CASE 1	1	
7	1Y-14462-00	SEAL	1	
8	1LN-14451-00	ELEMENT, AIR CLEANER	1	
9	46Y-14458-00	GUIDE	1	
10	46Y-14459-00	HOLDER, GUIDE	1	
11	1LN-14462-00	SEAL	1	
12	92907-05200	WASHER, PLAIN	3	
13	95607-05100	NUT, U	5	
14	46Y-14453-00	JOINT, AIR CLEANER 1	1	
15	46Y-14437-00	DUCT	1	
16	3AJ-1443E-00	PIPE, DRAIN	1	
17	90467-15012	CLIP	2	
18	46Y-28386-00	HEAD	3	
19	2TK-21757-00	WASHER, SPECIAL 1	3	
20	90154-05C04	SCREW, BINDING	2	
21	46Y-13591-00	CHAMBER, AIR 2	1	
22	46Y-15370-00	BREATHER ASSY	1	
23	46Y-14413-00	STAY	1	
24	90159-06056	SCREW, WITH WASHER	1	
25	46Y-11167-00	PIPE, BREATHER 2	1	
26	90467-11106	CLIP	1	
27	90467-12052	CLIP	1	
28	46Y-1443E-00	PIPE, DRAIN	1	

**B9**



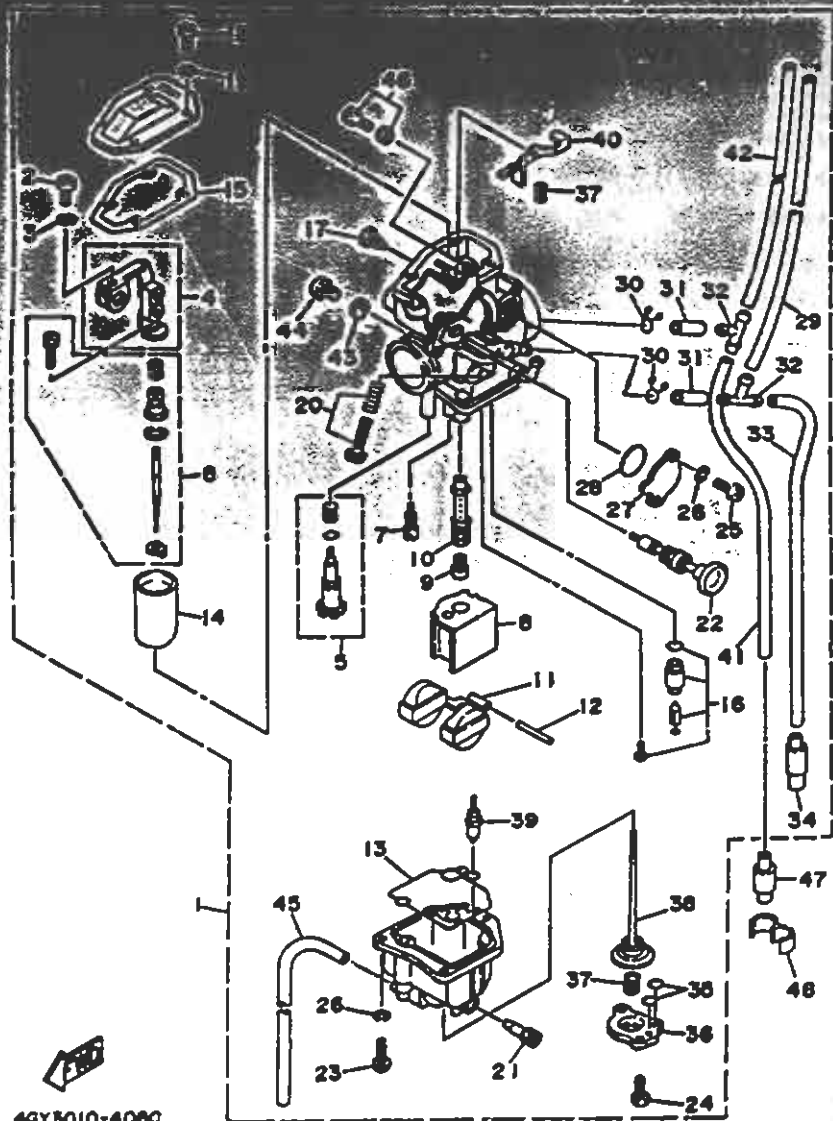


40Y1010-3070

776 101-40

REF NO	PART NO	DESCRIPTION	Q'TY	REMARKS
29	90460-50015	CLAMP, NOSE	1	
30	90119-06096	BOLT, WITH WASHER	1	
31	90119-06097	BOLT, WITH WASHER	2	
32	90460-13428	GROMMET	3	
33	90387-06737	COLLAR	3	
34	46Y-14485-00	PIPE, JOINT	1	

**B10**



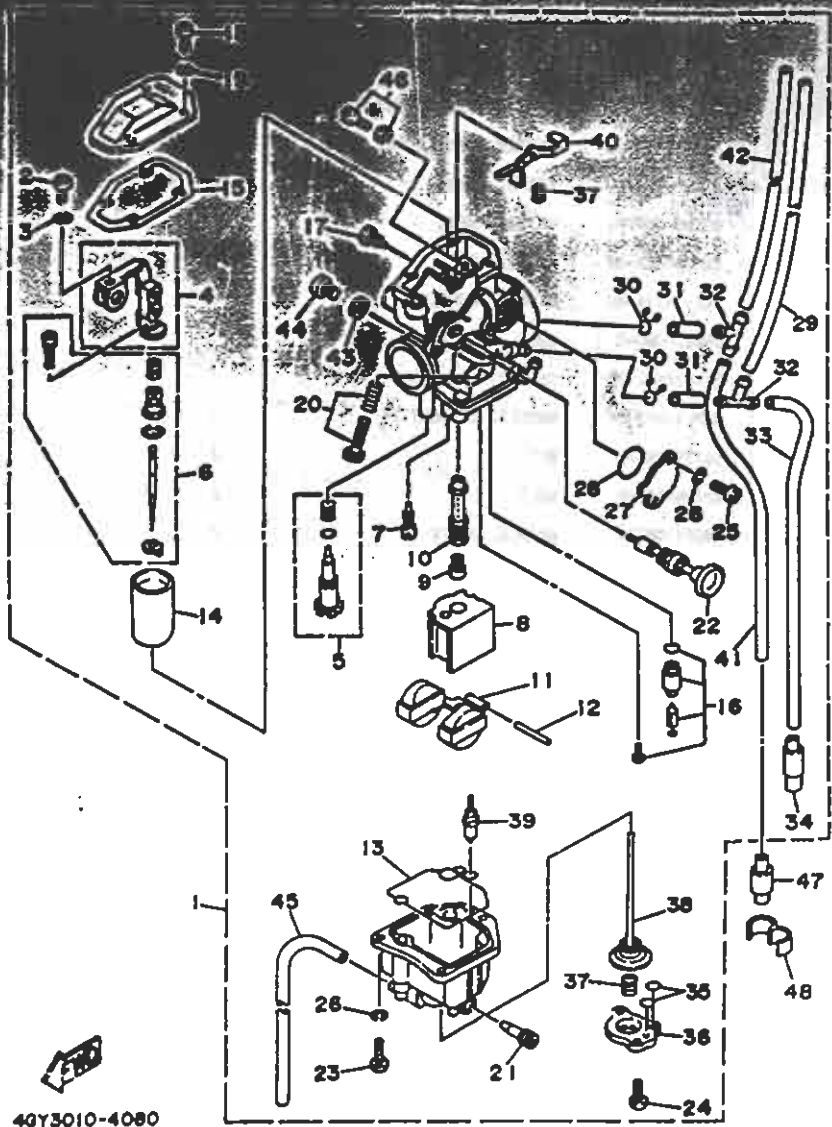
4GY3010-4080

FIG. 10 CARBURETOR

REF NO	PART NO	DESCRIPTION	QTY	REMARKS
1	4GY-1430-00	CARBURETOR ASSY	1	
2	98580-04016	.SCREW, PAN HEAD	7	
3	92990-04100	.WASHER, SPRING	1	
4	4GY-14292-00	.BRACKET 2	1	
5	4GY-14105-00	.PILOT SCREW SET	1	
6	4GY-1490J-00	.NEEDLE SET	1	
7	43F-14342-25	.JET, PILOT (#50)	1	
8	4GY-14153-00	.WASHER, MAIN JET	1	
9	4GY-14329-74	.JET, MAIN (#147)	1	
10	4RR-14341-00	.NOZZLE, MAIN	1	
11	2JN-14385-00	.FLOAT	1	
12	6E5-14386-01	.PIN, FLOAT	1	
13	4GY-14384-00	.GASKET, FLOAT CHAMBER	1	
14	4GY-14312-40	.VALVE, THROTTLE I	1	
15	4GY-14198-00	.GASKET	1	
16	4GY-14107-00	.NEEDLE VALVE SET	1	
17	4GY-14326-00	.SCREW, GUIDE	3	
18	98580-04008	.SCREW, PAN HEAD	4	
19	92901-04100	.WASHER, SPRING	4	
20	3GY-1490K-00	.STOP SCREW SET	1	
21	14T-14104-00	.AIR SCREW SET	1	
22	2KF-1410A-00	.STARTER SET	1	
23	98503-04014	.SCREW, PAN HEAD	3	
24	214-24535-00	.SCREW, LEVER FITTING	2	
25	985D1-04006	.SCREW, PAN HEAD	2	
26	92901-04100	.WASHER, SPRING	5	
27	4GY-14293-00	.COVER 1	1	
28	1HV-14147-00	.O-RING	1	

B11



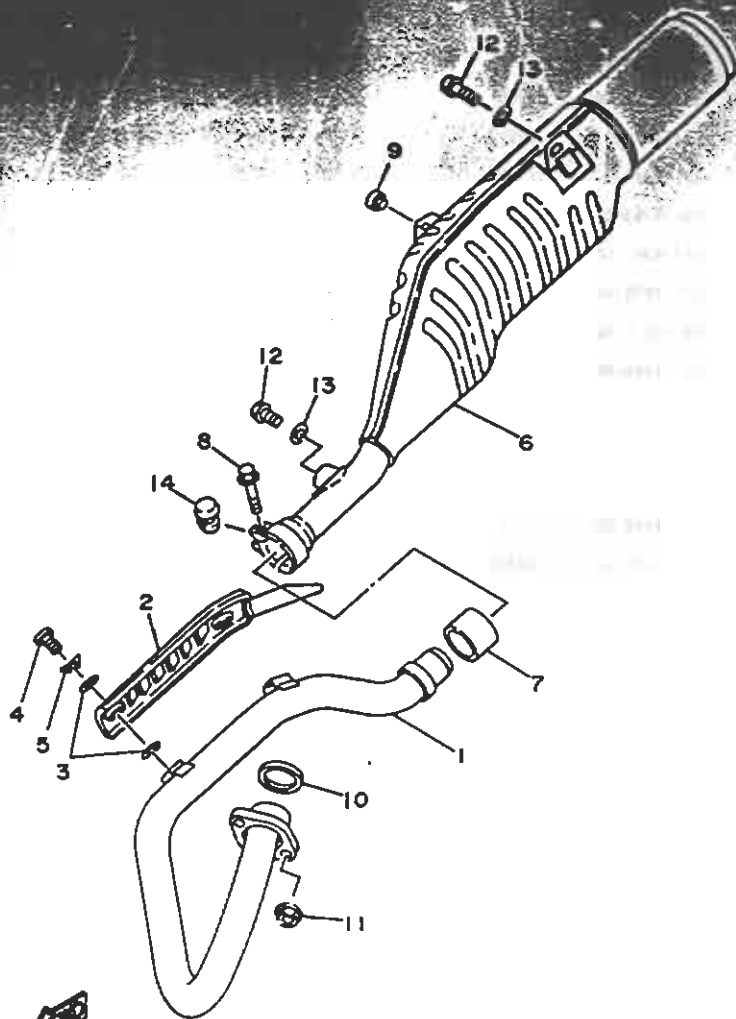


40Y3010-4080

770 CARBURETOR

REF NO	PART NO	DESCRIPTION	Q'TY	REMARKS
29	3YF-14149-00	.PIPE	1	
30	3YF-14159-00	.CLIP	2	
31	4GY-14149-00	.PIPE	2	
32	90413-07007	.NAY 3	2	
33	4GY-14149-10	.PIPE	1	
34	24W-14193-00	.PIPE	1	
35	5YI-14397-00	.O-RING	2	
36	4GY-14958-00	.COVER, DIAPHRAGM	1	
37	6G8-14275-00	.SPRING	2	
38	4GY-14940-00	.DIAPHRAGM ASSY	1	
39	4GY-14272-00	.VALVE, CHECK SEAT	1	
40	4GY-14276-00	.LEVER	1	
41	4GY-14149-20	.PIPE	1	
42	3YF-14196-00	.PIPE	1	
43	5H0-14126-00	.GASKET	1	
44	5H0-14991-00	.SCREW	1	
45	1JK-14197-00	.PIPE	1	
46	4GY-1490K-00	.STOP SCREW SET	1	
47	24W-14193-00	PIPE	1	
48	90468-15064	CLIP	1	

**B12**



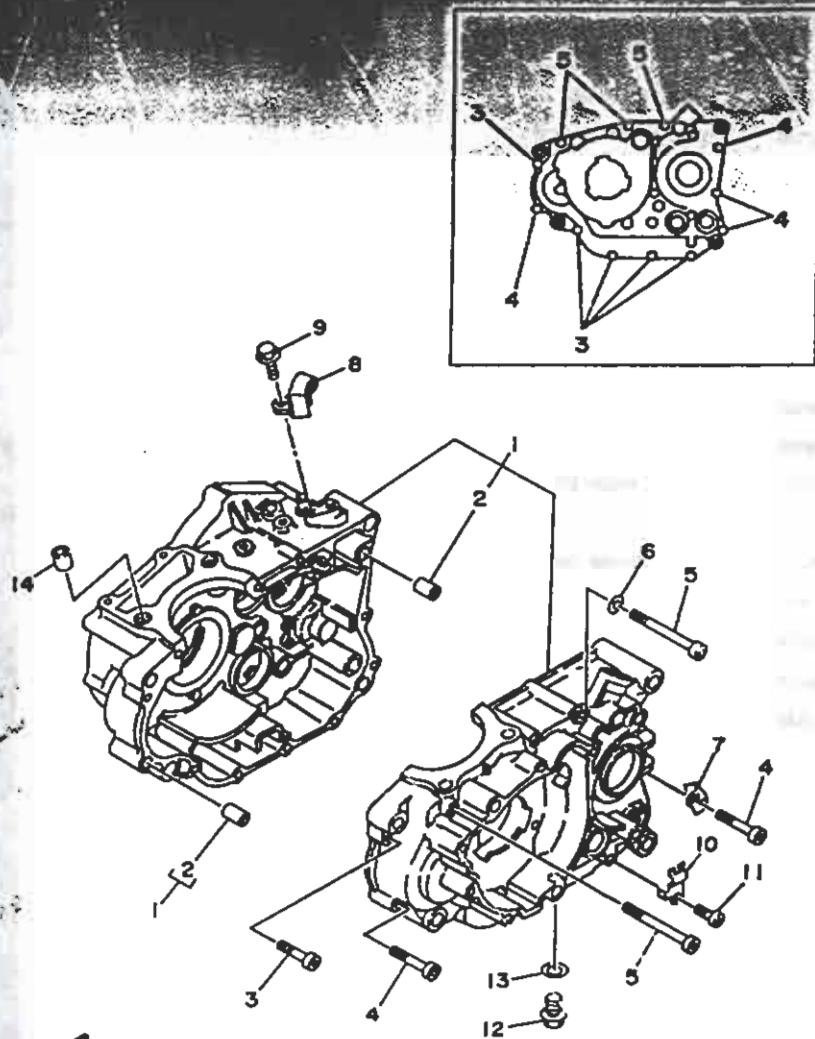
46Y1010-3090

REF. NO.	PART NO.	DESCRIPTION	Q'TY	REMARKS
1	46Y-14611-01	PIPE, EXHAUST 1	1	
2	46Y-14621-00	PROTECTOR, EXHAUST PIPE	1	
3	480-14766-00	WASHER, PROTECTOR	4	
4	90980-06010	SCREW, BIND	2	
5	90206-06090	WASHER, HANGE	2	
6	46Y-14711-02	MUFFLER 1	1	
7	4EL-14714-00	GASKET, MUFFLER	1	
8	95027-C8040	BOLT, FLANGE	1	
9	22N-24181-00	DAMPER, LOCATING 1	2	
10	4FN-14613-00	GASKET, EXHAUST PIPE	1	
11	90179-08410	NUT	2	
12	90109-08260	BOLT	2	
13	90201-08326	WASHER, PLATE	2	
14	46Y-14799-00	CAP	1	

**B13**



FIG. 10 CRANKCASE

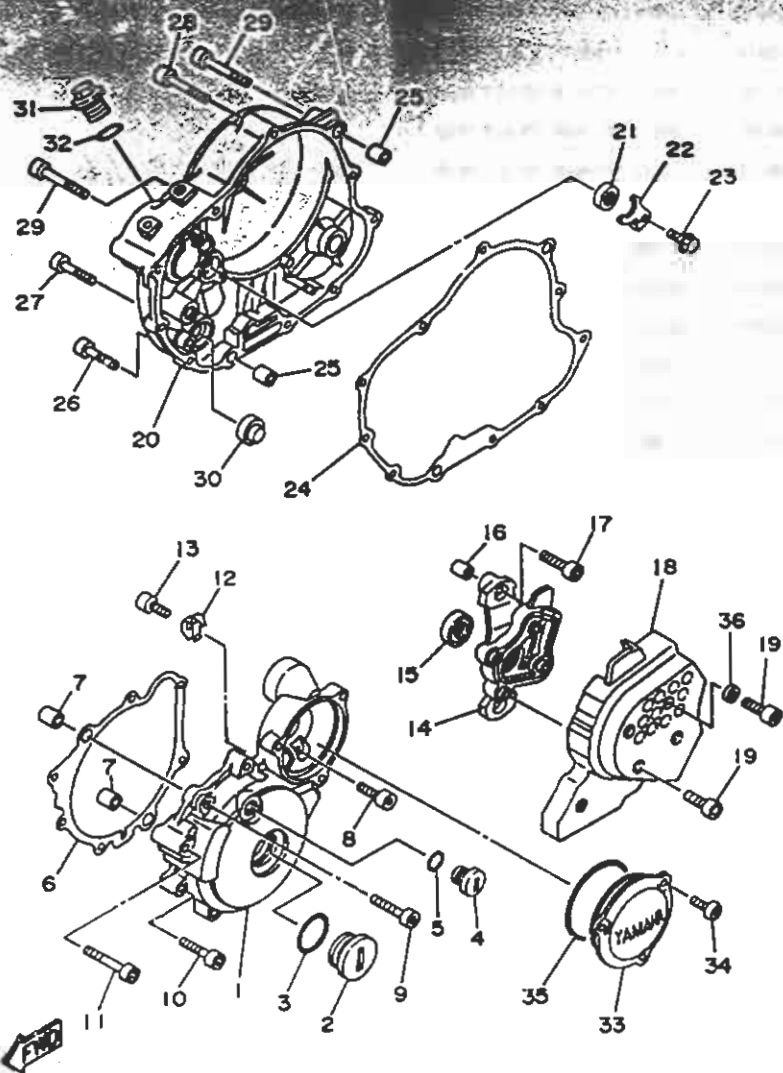


REF. NO.	PART NO.	DESCRIPTION	Q'TY	REMARKS
1	4RR-15100-00	CRANKCASE ASSY	1	
2	99530-10014	.PIN, DOWEL	2	
3	91317-06030	BOLT, HEXAGON SOCKET HEAD	5	
4	91317-06045	BOLT, HEXAGON SOCKET HEAD	4	
5	91317-06070	BOLT, HEXAGON SOCKET HEAD	3	
6	90430-06014	GASKET	1	
7	90462-08225	CLAMP	2	
8	4GT-15441-00	HOLDER, CLUTCH CABLE	1	
9	95817-06016	BOLT, FLANGE	1	
10	90462-10215	CLAMP	1	
11	98507-06010	SCREW, PAN HEAD	1	
12	90340-12059	PLUG, STRAIGHT SCREW	1	
13	90430-12213	GASKET	1	
14	99530-14016	PIN, DOWEL	2	

  
4MR2310-6100

**B14**

FIG. 111 CRANKCASE COVER 1



46Y1010-3110

REF. NO.	PART NO.	DESCRIPTION	Q'TY	REMARKS
1	46Y-15411-02	COVER, CRANKCASE 1	1	
2	90340-32126	PLUG, STRAIGHT SCREW	1	
3	93210-32172	O-RING	1	
4	90340-14128	PLUG, STRAIGHT SCREW	1	
5	93210-14369	O-RING	1	
6	46Y-15451-00	GASKET, CRANKCASE COVER 1	1	
7	99530-10014	PIN, DOWEL	2	
8	90110-06224	BOLT, HEXAGON SOCKET HEAD	1	
9	91317-06040	BOLT, HEXAGON SOCKET HEAD	2	
10	91317-06030	BOLT, HEXAGON SOCKET HEAD	4	
11	91317-06045	BOLT, HEXAGON SOCKET HEAD	1	
12	90465-12373	CLAMP	1	
13	91317-05012	BOLT, HEXAGON SOCKET HEAD	1	
14	46Y-1541E-00	STAY, COVER 2	1	
15	93106-15034	OIL SEAL	1	
16	99530-10014	PIN, DOWEL	2	
17	90110-06224	BOLT, HEXAGON SOCKET HEAD	2	
18	46Y-15421-00	COVER, CRANKCASE 2	1	
19	91317-06016	BOLT, HEXAGON SOCKET HEAD	5	
20	46Y-15431-00	COVER, CRANKCASE 3	1	
21	93101-14164	OIL SEAL	1	
22	46Y-15118-00	HOLDER	1	
23	90105-06553	BOLT, WASHER BASED	1	
24	46Y-15461-00	GASKET, CRANKCASE COVER 2	1	
25	99530-10014	PIN, DOWEL	2	
26	91317-06025	BOLT, HEXAGON SOCKET HEAD	6	
27	91317-06035	BOLT, HEXAGON SOCKET HEAD	1	
28	91317-06040	BOLT, HEXAGON SOCKET HEAD	1	

B15

# CONTENTS

## ENGINE

Cylinder Head.....	B2
Cylinder.....	B3
Crankshaft. Piston.....	B4
Valve.....	B5~B6
Camshaft. Chain.....	B7
Oil Pump.....	B8
Intake.....	B9~B10
Carburetor.....	B11~B12
Exhaust.....	B13
Crankcase.....	B14
Crankcase Cover 1.....	B15~C2
Starter Clutch.....	C3
Clutch.....	C4
Transmission.....	C5
Shift Cam. Fork.....	C6
Shift Shaft.....	C7

Rear Wheel.....	D10
Rear Brake Caliper.....	D11
Steering Handle. Cable.....	D12
Front Master Cylinder.....	D13
Stand. Footrest.....	D14
Rear Master Cylinder.....	D15
Generator.....	E2
Starting Motor.....	E3
Flasher Light.....	E4
Meter.....	E5
Headlight.....	E6
Taillight.....	E7
Handle Switch. Lever.....	E8
Electrical 1.....	E9~E10
Electrical 2.....	E11

## CHASSIS

Frame.....	C8~C9
Fender.....	C10
Side Cover.....	C11
Rear Arm.....	C12~C13
Rear Suspension.....	C14
Steering.....	C15~D2
Front Fork.....	D3~D5
Fuel Tank.....	D6
Seat.....	D7
Front Wheel.....	D8
Front Brake Caliper.....	D9

## INDEX

Numerical Index.....	M1~M4
----------------------	-------



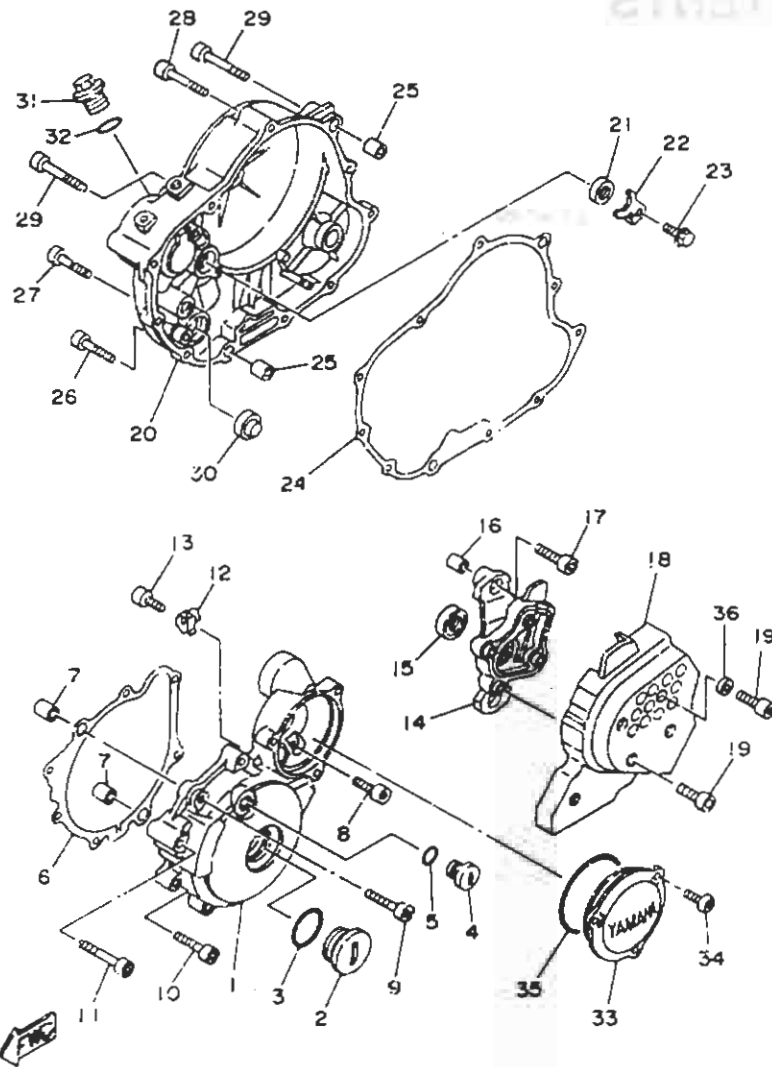


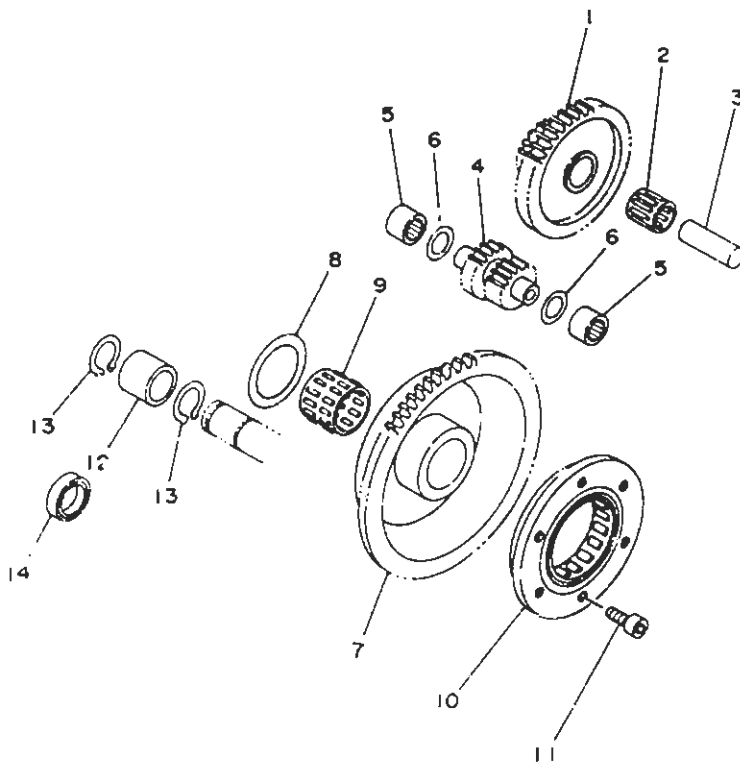
FIG. 11 CRANKCASE COVER 1

REF. NO.	PART NO.	DESCRIPTION	Q'TY	REMARKS
29	91317-06050	BOLT, HEXAGON	2	
30	3Y1-15361-00	GAUGE, LEVEL	1	
31	90340-20143	PLUG, STRAIGHT SCREW	1	
32	93210-19123	O-RING	1	
33	4GY-15415-01	COVER, GENERATOR	1	
34	92017-06016	SCREW	3	
35	93210-74M35	O-RING	1	
36	90430-06226	GASKET	1	

4GY1010-3112

C2



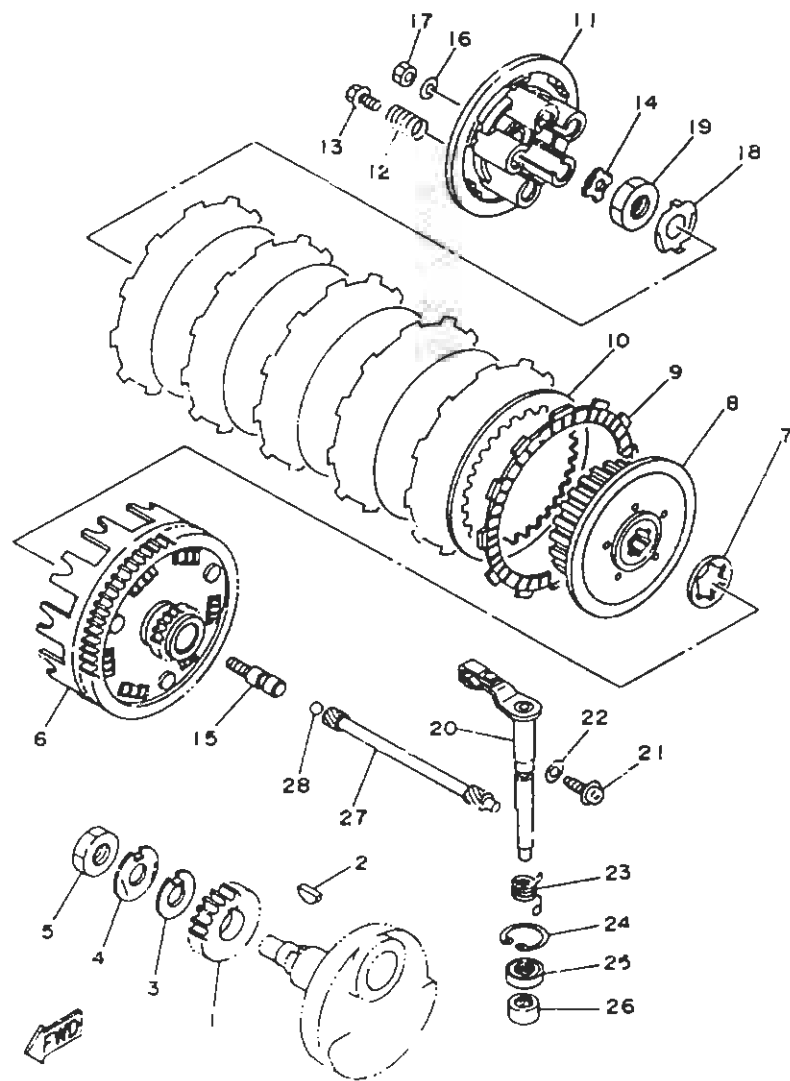


  
 4GY1010-3'20

FIG. 12 STARTER CLUTCH

REF. NO.	PART NO.	DESCRIPTION	Q'TY	REMARKS
1	4GY-15512-01	GEAR, IDLER 1	1	
2	93310-212R6	BEARING, CYLINDRICAL	1	
3	4GY-15521-00	SHAFT 1	1	
4	4GY-15517-01	GEAR, IDLER 2	1	
5	93315-11206	BEARING, CYLINDRICAL	2	
6	296-13147-00	NUT	2	
7	4GY-15515-00	GEAR 3	1	
8	90201-25291	WASHER, PLATE	1	
9	93310-225M0	BEARING, CYLINDRICAL	1	
10	4GY-15590-00	STARTER ONE-WAY ASSY	1	
11	90110-06091	BOLT, HEXAGON SOCKET HEAD	6	
12	90560-17265	SPACER	1	
13	99009-17400	CIRCLIP	2	
14	55X-15167-00	PLUG, BLIND 1	1	

C3

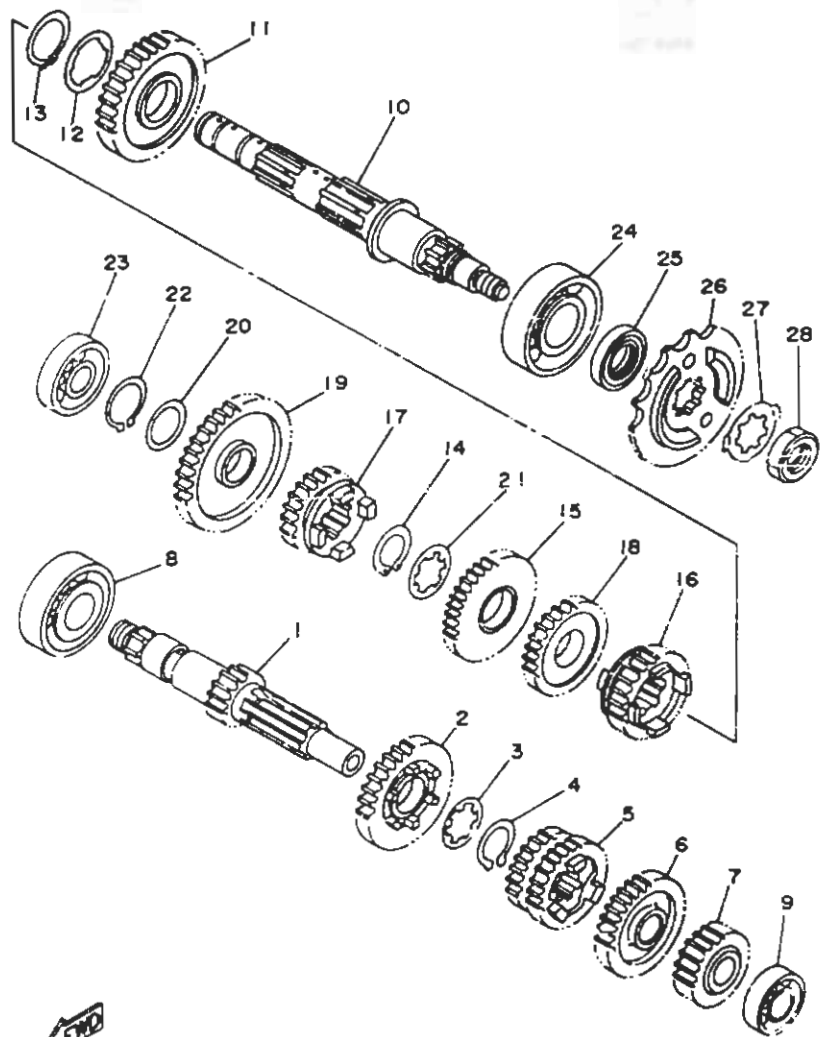


4PX1700-5130

FIG. 13 CLUTCH

REF. NO.	PART NO.	DESCRIPTION	Q'TY	REMARKS
1	4GY-16111-00	GEAR, PRIMARY DRIVE	1	
2	90280-07055	KEY, WOODRUFF	1	
3	90214-16063	WASHER, CLAW	1	
4	90215-16286	WASHER, LOCK	1	
5	90170-16187	NUT	1	
6	4GY-16150-00	PRIMARY DRIVEN GEAR COMP.	1	
7	30X-16154-00	PLATE, THRUST	1	
8	4GY-16371-01	BOSS, CLUTCH	1	
9	5XJ-16321-00	PLATE, FRICTION	1	
10	3PJ-16374-00	PLATE, CLUTCH 1	1	
11	4GY-16351-00	PLATE, PRESSURE 1	1	
12	90511-23763	SPRING, COMPRESSION	1	
13	90159-06010	SCREW, WITH WASHER	5	
14	1W1-16358-01	PLATE, PUSH 1	1	
15	4DN-16356-00	ROD, PUSH 1	1	
16	92907-06200	WASHER, PLAIN	1	
17	95307-06600	NUT	1	
18	90215-16289	WASHER, LOCK	1	
19	90170-16326	NUT	1	
20	4GY-16380-01	PUSH LEVER ASSY	1	
21	90140-09067	SCREW	1	
22	90201-08087	WASHER, PLATE	1	
23	90508-06646	SPRING, TORSION	1	
24	99009-20500	CIRCLIP	1	
25	03102-12224	OIL SEAL	1	
26	93315-11200	BEARING, CYLINDRICAL	1	
27	4GY-16J57-01	ROD, PUSH 2	1	
28	93511-32027	BALL	1	

C4



4GY1010-3140



FIG. 14 TRANSMISSION

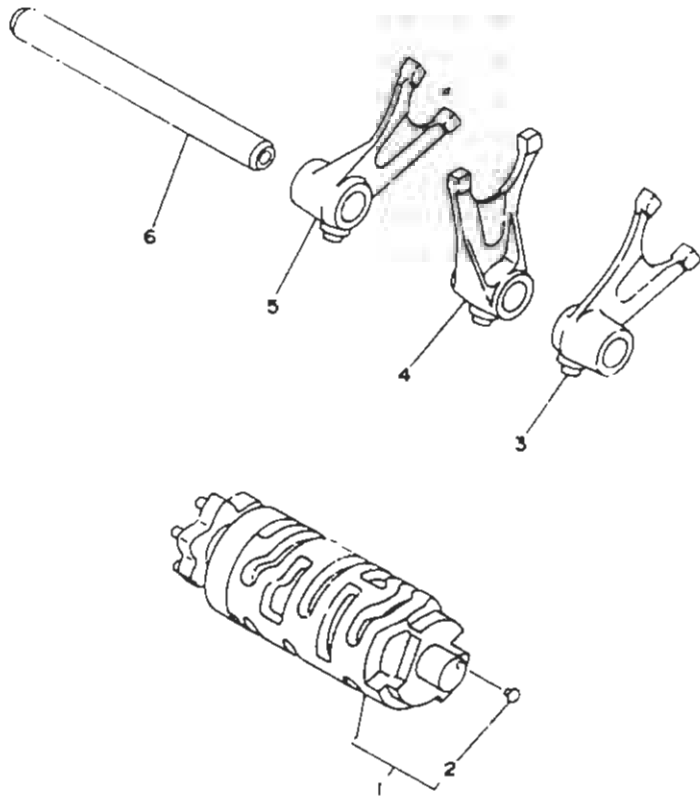
REF. NO.	PART NO.	DESCRIPTION	Q'TY	REMARKS
1	4GY-17411-00	AXLE, MAIN	1	
2	4GY-17161-01	GEAR, 6TH PINION	1	
3	90209-18208	WASHER	1	
4	93410-22039	CIRCLIP	1	
5	4GY-17131-00	GEAR, 3RD PINION	1	
6	55V-17151-02	GEAR, 5TH PINION (27T)	1	
7	51V-17121-00	GEAR, 2ND PINION (16T)	1	
8	93306-20427	BEARING (62/22-9-C3)	1	
9	93306-00320	BEARING	1	
10	4GY-17402-00	DRIVE AXLE ASSY	1	
11	4GY-17221-00	GEAR, 2ND WHEEL	1	
12	90209-23241	WASHER	1	
13	93410-26067	CIRCLIP	1	
14	93410-22039	CIRCLIP	1	
15	4GY-17231-00	GEAR, 3RD WHEEL	1	
16	4GY-17251-00	GEAR, 5TH WHEEL	1	
17	4GY-17261-01	GEAR, 6TH WHEEL	1	
18	4GY-17241-00	GEAR, 4TH WHEEL	1	
19	4GY-17211-00	GEAR, 1ST WHEEL	1	
20	90201-17764	WASHER, PLATE	1	
21	90209-18208	WASHER	1	
22	93410-17037	CIRCLIP	1	
23	93306-20332	BEARING	1	
24	93306-20529	BEARING (56205C4)	1	
25	93102-25226	OIL SEAL	1	
26	4GY-17460-00	SPROCKET, DRIVE	1	
27	90215-23265	WASHER, LOCK	1	
28	90179-18552	NUT	1	

C5



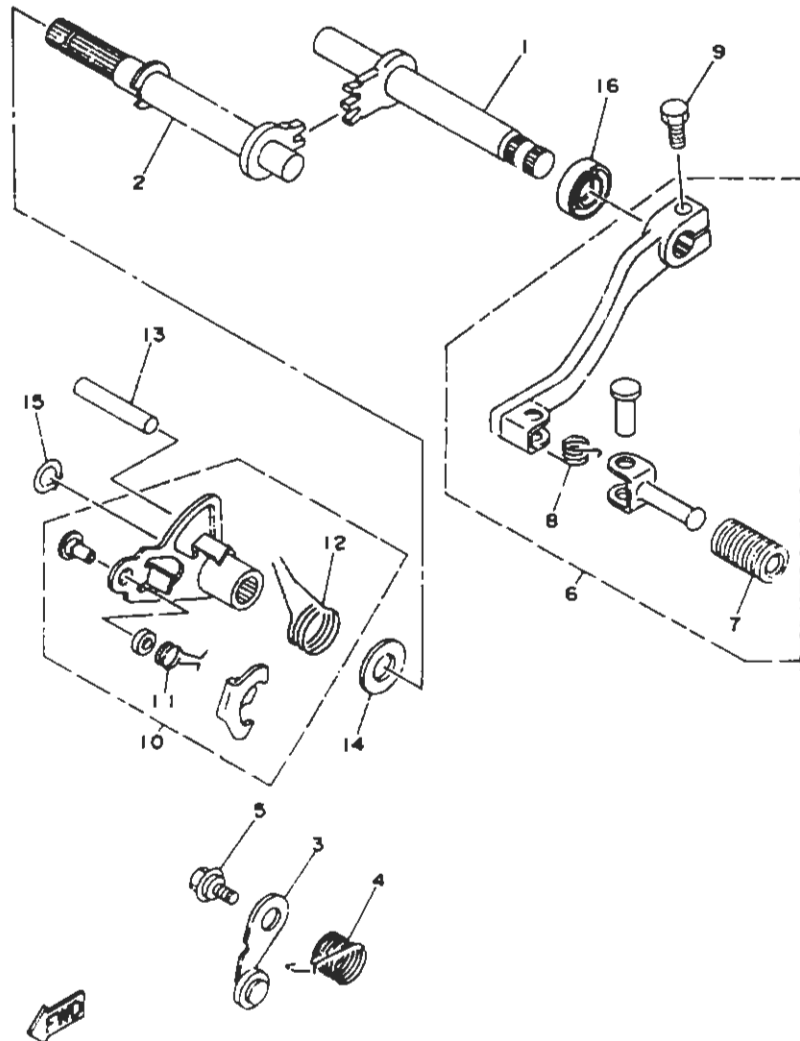
FIG. 15 SHIFT CAM. FORK

REF. NO.	PART NO.	DESCRIPTION	Q'TY	REMARKS
1	4GY-18540-00	SHIFT CAM ASSY	1	
2	136-18547-00	.PCINT, NEUTRAL	2	
3	4GY-18511-00	FORK, SHIFT 1	1	
4	4GY-18512-00	FORK, SHIFT 2	1	
5	4GY-18513-00	FORK, SHIFT 3	1	
6	4GY-18531-00	BAR, SHIFT FORK GUIDE	1	



  
4GY1010-3150

**Co**



4GY1010-3160

FIG. 16 SHIFT SHAFT

REF. NO.	PART NO.	DESCRIPTION	Q'TY	REMARKS
1	4GY-18101-00	SHIFT SHAFT ASSY	1	
2	4GY-18102-00	SHIFT SHAFT ASSY 2	1	
3	4GY-18140-00	STOPPER LEVER ASSY	1	
4	90508-26561	SPRING, TORSION	1	
5	90109-C63F7	BOLT	1	
6	4GY-18110-00	SHIFT PEDAL ASSY	1	
7	1M6-18113-00	.COVER, SHIFT PEDAL	1	
8	90508-14525	.SPRING, TORSION	1	
9	97027-0602D	BOLT	1	
10	4GY-18120-00	SHIFT LEVER ASSY	1	
11	90508-09420	.SPRING, TORSION	1	
12	90508-32682	.SPRING, TORSION	1	
13	93608-43228	PIN, DOWEL	1	
14	90201-12474	WASHER, PLATE	1	
15	99001-09600	CIRCLIP	1	
16	93102-14209	OIL SEAL	1	

C7

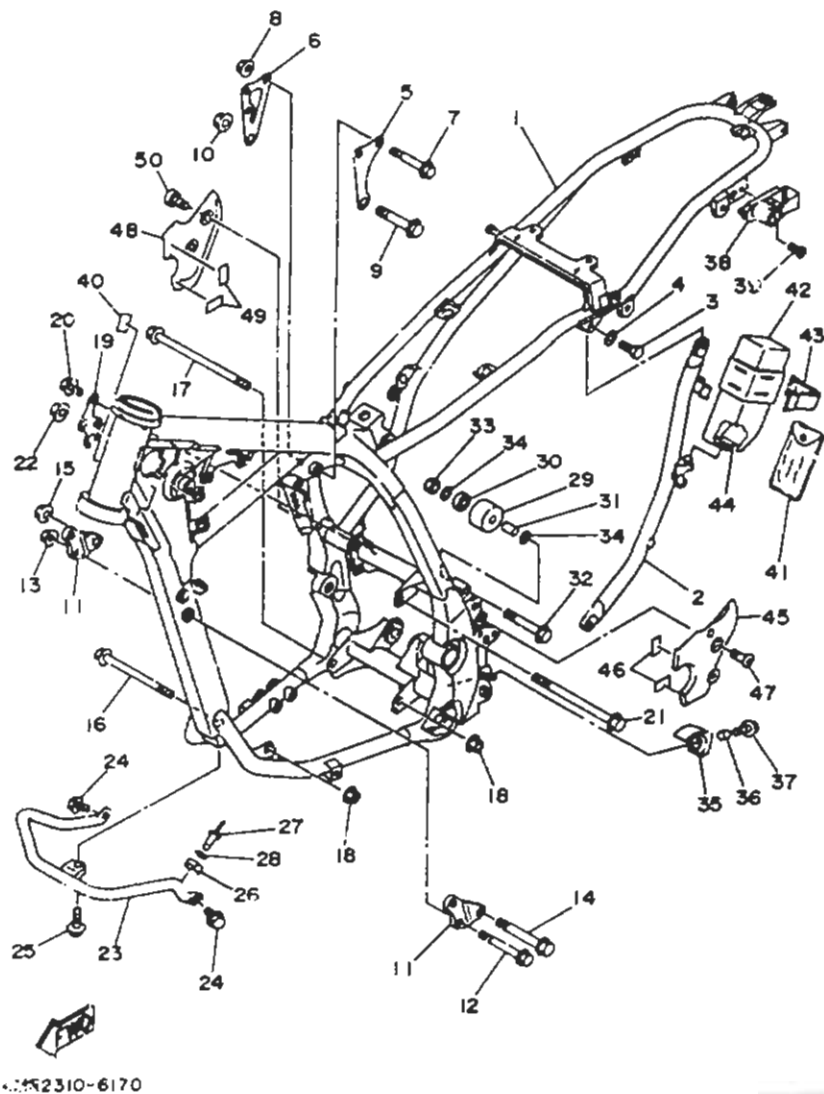
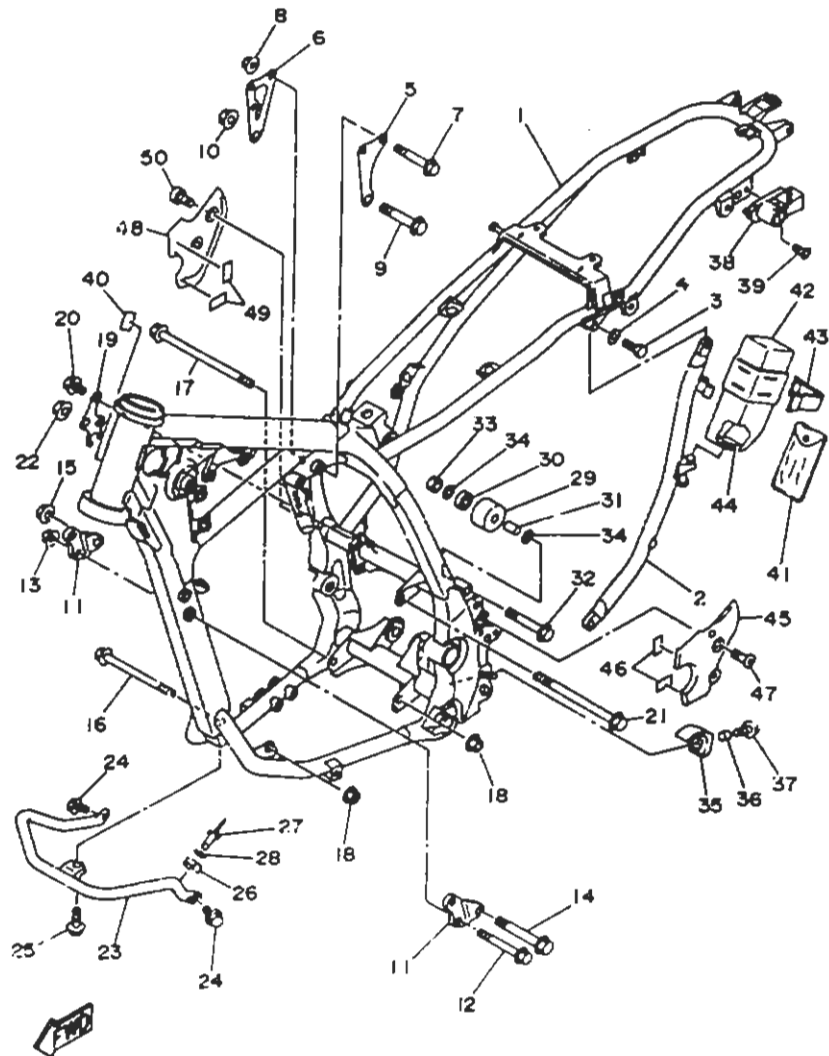


FIG. 17 FRAME

REF. NO.	PART NO.	DESCRIPTION	Q'TY	REMARKS
1	4RR-21110-00-PO	FRAME COMP.	1	DEEP VIOLET SOLID 1
2	4GY-21105-00-PO	BACK STAY SUB COMP. 1	1	DEEP VIOLET SOLID 1
3	90106-08053	BOLT	2	
4	90201-08086	WASHER, PLATE	2	
5	4GY-21315-00	STAY, ENGINE 2	1	
6	4GY-21318-01	STAY, ENGINE 5	1	
7	95817-08055	BOLT, FLANGE	2	
8	95617-08200	NUT, SELF-LOCKING	2	
9	90105-10232	BOLT, WASHER BASED	1	
10	95617-10200	NUT, SELF-LOCKING	1	
11	4GY-21319-00	STAY, ENGINE 6	2	
12	95817-08070	BOLT, FLANGE	2	
13	95617-08200	NUT, SELF-LOCKING	2	
14	90105-10609	BOLT, WASHER BASED	1	
15	95617-10200	NUT, SELF-LOCKING	1	
16	90105-10050	BOLT, WASHER BASED	1	
17	90105-10444	BOLT, WASHER BASED	1	
18	95617-10200	NUT, SELF-LOCKING	2	
19	4GY-21317-00	STAY, ENGINE 3	1	
20	95817-08016	BOLT, FLANGE	2	
21	90105-10183	BOLT, WASHER BASED	1	
22	95617-10200	NUT, SELF-LOCKING	1	
23	4GY-21471-00	PROTECTOR, ENGINE	1	
24	95817-06012	BOLT, FLANGE	2	
25	95817-06012	BOLT, FLANGE	1	
26	4GY 21486-00	DAMPER 2	1	
27	90267-32071	PIVOT, BLIND	1	
28	90201-03313	WASHER, PLATE	1	

CB

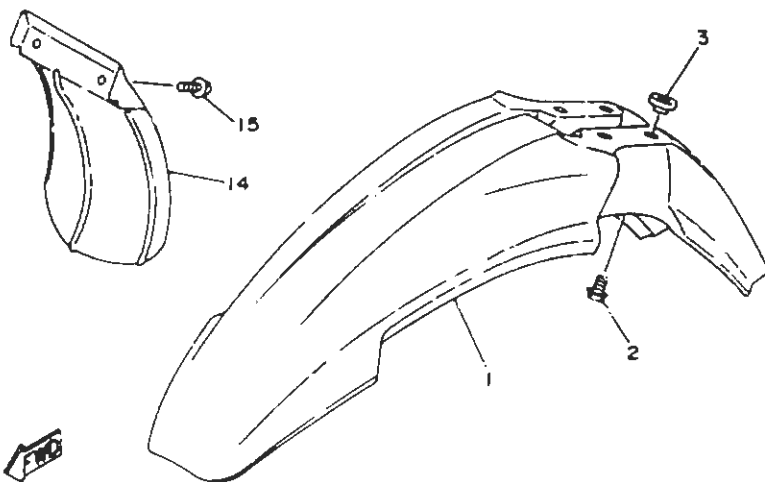
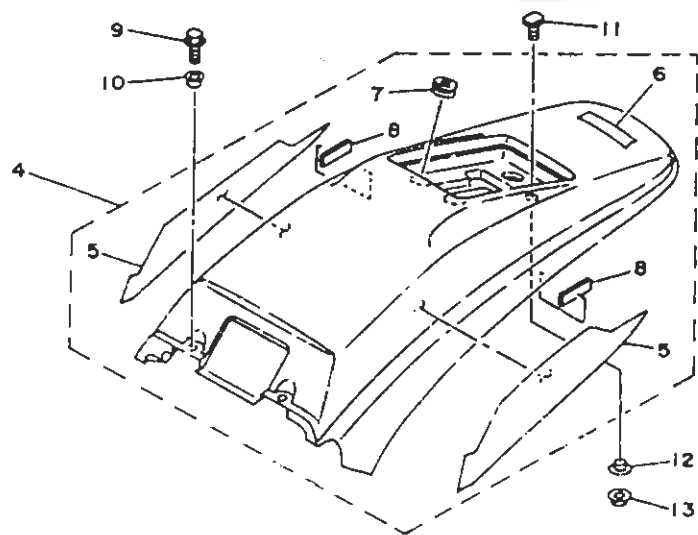




4MR2310-6170

FIG. 17 FRAME

REF. NO.	PART NO.	DESCRIPTION	QTY	REMARKS
29	4EW-22178-00	TENSIONER	1	
30	93300-60804	BEARING	1	
31	90387-086N4	COLLAR	1	
32	95027-08060	BOLT, FLANGE	1	
33	90170-08158	NUT	1	
34	90201-086P8	WASHER, PLATE	2	
35	4ES-22178-00	TENSIONER	1	
36	90387-06216	COLLAR	1	
37	90119-06118	BOLT, WITH WASHER	1	
38	26H-21308-00	HELMET HANGER ASSY	1	
39	90149-06154	SCREW	1	
40	1JX-21268-00	SEAL	1	
41	4GY-28100-30	TOOL KIT	1	
42	4GY-21197-00	TOOL KIT COMP.	1	
43	120-82131-00	BAND, BATTERY	1	
44	4GY-28267-00	DAMPER 5	1	
45	4RR-2117F-00	COVER	1	
46	4RR-214B5-00	DAMPER, RUBBER 1	2	
47	90150-06021	SCREW, ROUND HEAD	2	
48	4RR-2117M-00	COVER 2	1	
49	4RR-214B5-00	DAMPER, RUBBER 1	1	
50	90150-06021	SCREW, ROUND HEAD	1	



4MR2310-6180

FIG. 18 FENDER

REF. NO.	PART NO.	DESCRIPTION	Q'TY	REMARKS
1	4GY-21511-00	FENDER, FRONT	1	
2	90119-06063	BOLT, WITH WASHER	2	
3	90387-06681	COLLAR	4	
4	4GY-21611-00	REAR FENDER COMP.	1	
5	4RR-2165A-00	.GRAPHIC SET, REAR FENDER	1	
6	99247-00067	.EMBLEM, YAMAHA	1	
7	90480-14023	.GROMMET	3	
8	3XV-21717-30	.DAMPER, SIDE COVER	2	
9	97017-06016	BOLT, FLANGE	4	
10	90387-064J1	COLLAR	1	
11	90109-064A5	BOLT	1	
12	90387-06646	COLLAR	1	
13	45607-06200	NUT, SELF-LOCKING	1	
14	4GY-21642-00	GUARD, FLAP	1	
15	90119-06194	BOLT, WITH WASHER	2	

C10

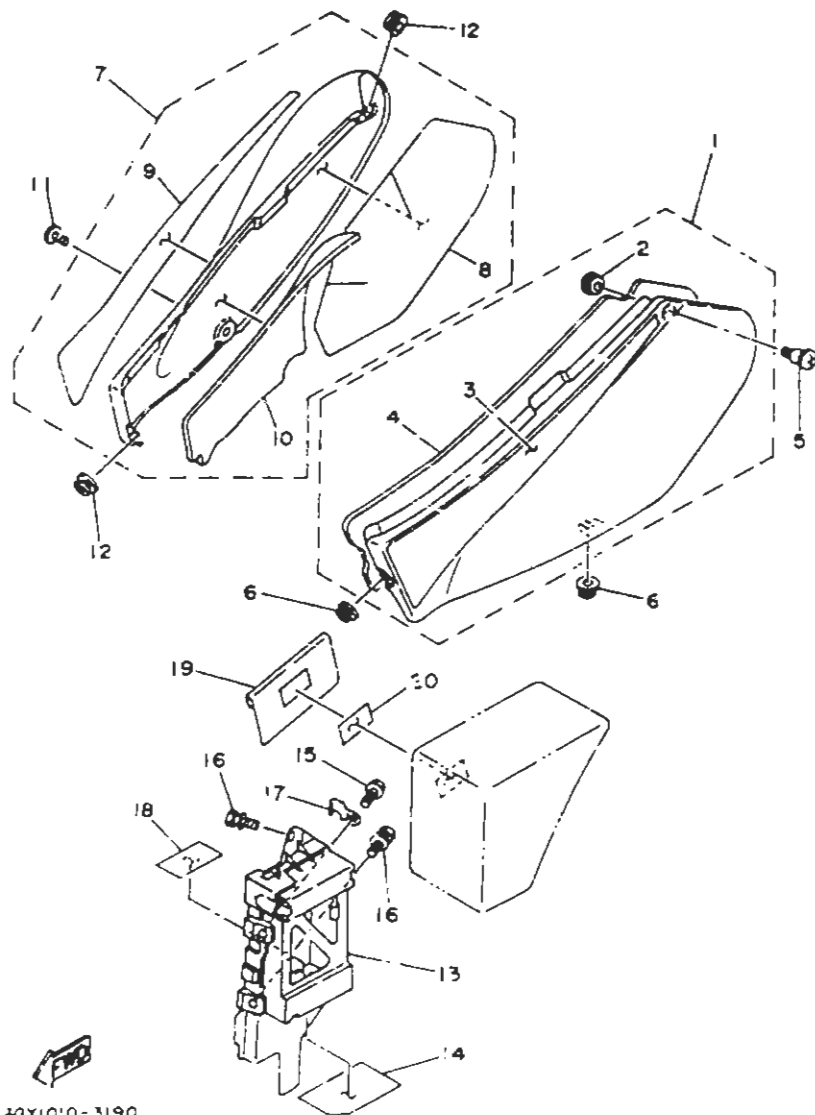


FIG. 19 SIDE COVER

REF. NO.	PART NO.	DESCRIPTION	Q'TY	REMARKS
1	4GY-Y2171-40	COVER, SIDE 1	1	
2	90480-13018	GROMMET	1	
3	4RR-2173E-00	GRAPHIC 1	1	
4	4GY-2174E-00	DAMPER	1	
5	90150-06036	SCREW, ROUND HEAD	1	
6	90480-12320	GROMMET	2	
7	4GY-2172-40	COVER, SIDE 2	1	
8	4GY-2174A-00	INSULATOR, SIDE COVER	1	
9	4RR-2173F-00	GRAPHIC 2	1	
10	4GY-21747-00	DAMPER	1	
11	90150-06031	SCREW, ROUND HEAD	1	
12	90480-12320	GROMMET	2	
13	4GY-2177G-00	BOX, BATTERY	1	
14	4GY-2174T-00	INSULATOR, SIDE COVER 2	1	
15	90101-06664	BOLT	1	
16	90119-06094	BOLT, WITH WASHER	2	
17	4GY-21365-00	HOOK, BATTERY BAND	1	
18	4GY-B2123-00	SEAT, BATTERY	1	
19	4U7-28186-00	POUCH	1	
20	4K5-2814E-10	HOOK	1	

40Y10'0-3190

C11



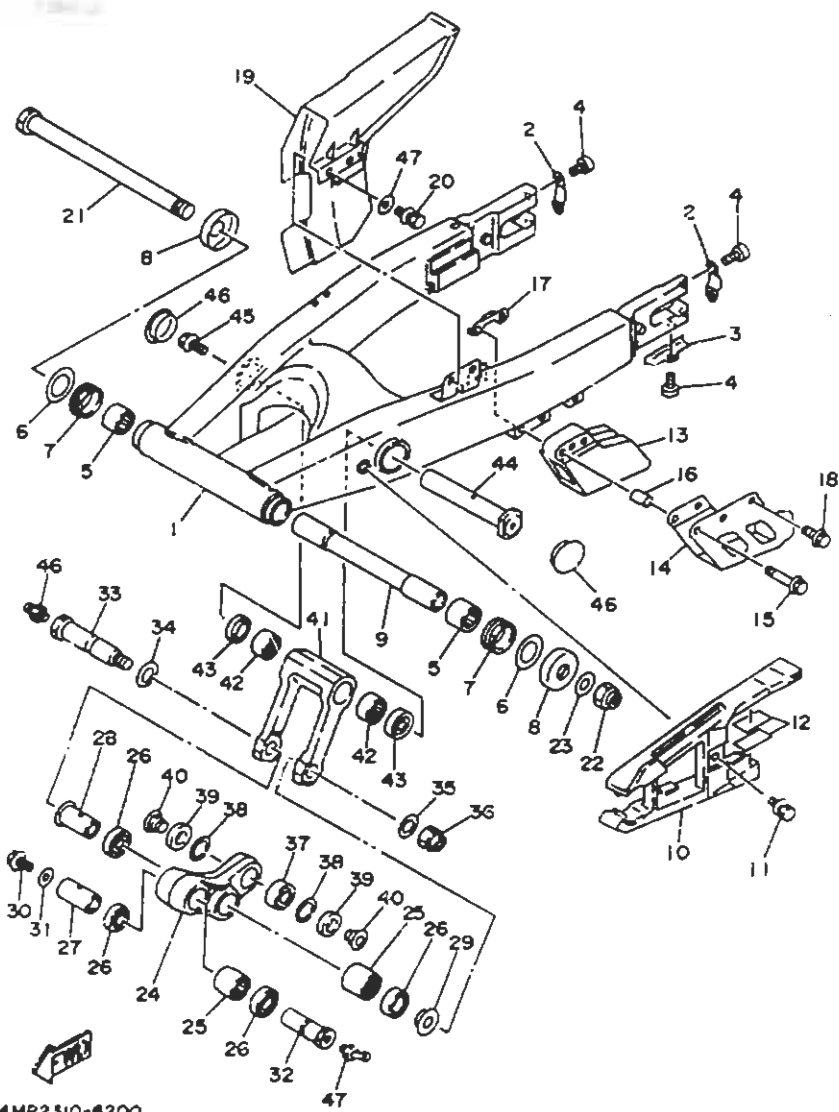
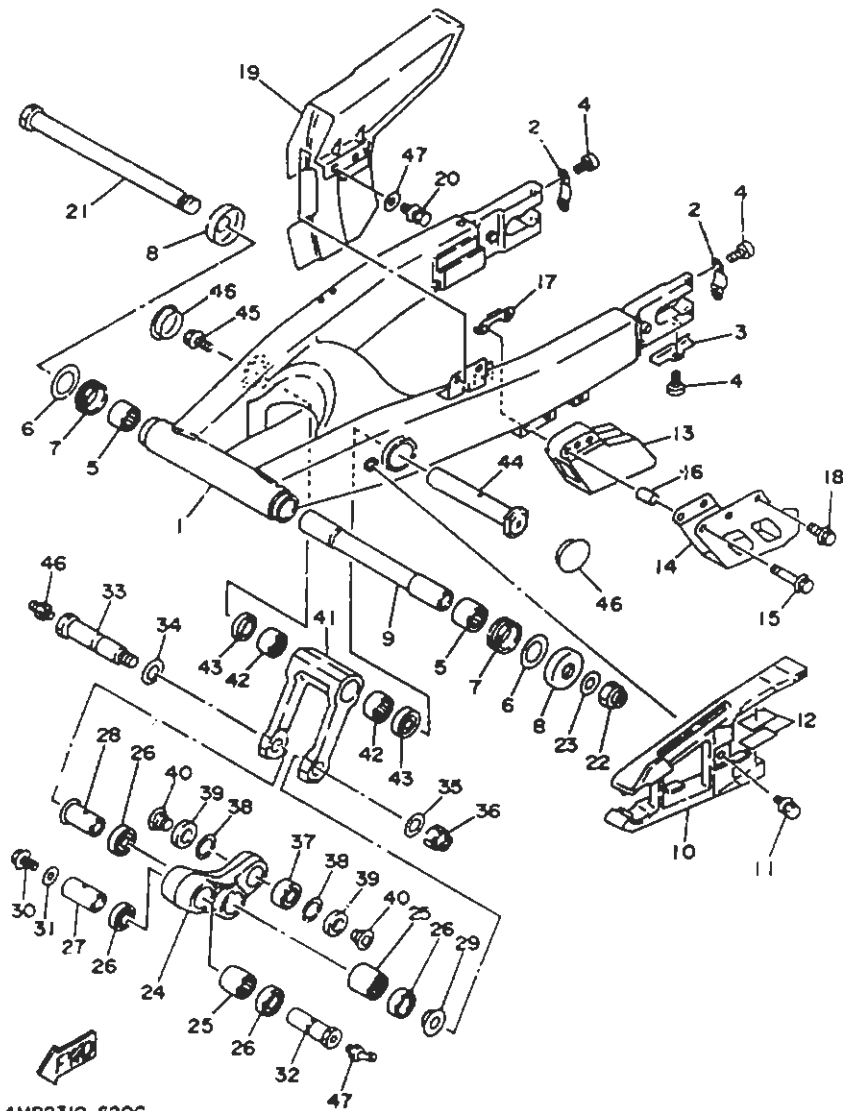


FIG. 20 REAR ARM

REF. NO.	PART NO.	DESCRIPTION	Q'TY	REMARKS
1	4RR-22110-00	REAR ARM COMP.	1	
2	4GY-22177-00	END 3	2	
3	4GY-22165-00	BRACKET	1	
4	9B507-05010	SCREW, PAN HEAD	5	
5	93315-22251	BEARING, CYLINDRICAL	2	
6	90201-254MB	WASHER, PLATE	2	
7	93108-35004	OIL SEAL (35-41-2)	2	
8	10X-2219X-00	COVER	2	
9	29L-22184-00	BUSH	1	
10	4GY-22151-00	SEAL, GUARD	1	
11	90119-06096	BOLT, WITH WASHER	1	
12	22F-2139X-00	DAMPER	2	
13	4RR-22199-00	SUPPORT, CHAIN	1	
14	4RR-22128-00	COVER, THRUST	1	
15	95D27-06050	BOLT, FLANGE	2	
16	90387-060N3	COLLAR	2	
17	4RR-22143-00	NUT	1	
18	95027-06010	BOLT, FLANGE	1	
19	34K-22311-01	CASE, CHAIN	1	
20	90119-06203	BOLT, WITH WASHER	2	
21	5X6-22141-01	SHAFT, PIVOT	1	
22	90185-16127	NUT, SELF-LOCKING	1	
23	90201-164H4	WASHER, PLATE	1	
24	4GY-2217A-00	ARM, RELAY	1	
25	93315-32053	BEARING, CYLINDRICAL	2	
26	93109-2C029	OIL SEAL	4	
27	90387-166X1	COLLAR	1	
28	90387-1606R	COLLAR	1	

C12



4MR2310-620C

FIG. 20 REAR ARM

REF. NO.	PART NO.	DESCRIPTION	QTY	REMARKS
29	90387-164N2	COLLAR	1	
30	95817-10016	BOLT, FLANGE	1	
31	90201-106F2	WASHER, PLATE	1	
32	90179-10665	NUT	1	
33	90401-14163	BOLT, UNION	1	
34	90201-164H4	WASHER, PLATE	1	
35	90201-14740	WASHER, PLATE	1	
36	90185-14070	NUT, SELF-LOCKING	1	
37	93399-99925	BEARING	1	
38	93440-30113	CIRCLIP	1	
39	3XJ-22475-C0	SEAL, DUST	1	
40	90387-103X9	COLLAR	2	
41	4GY-2217F-00	ROD, CONNECTING	1	
42	93315-32052	BEARING	2	
43	93109-20029	OIL SEAL	2	
44	90179-12656	NUT	1	
45	95817-12016	BOLT, FLANGE	1	
46	1HX-2135F 10	COVER	2	
47	90201-06776	WASHER, PLATE	2	

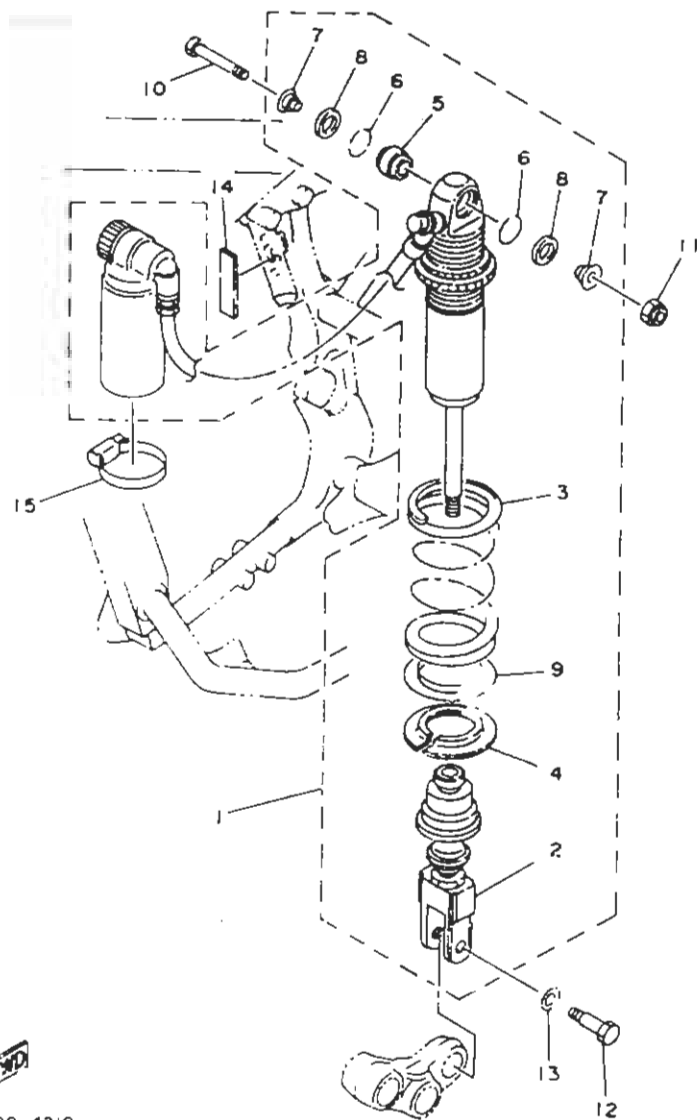


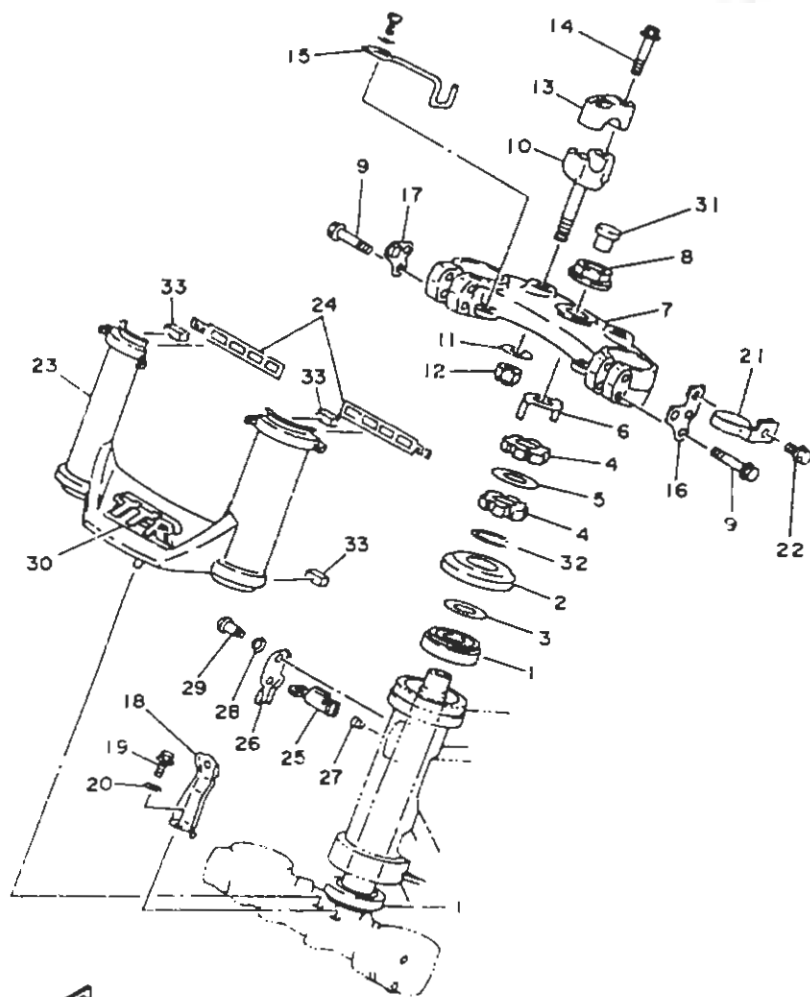
FIG. 21 REAR SUSPENSION

REF. NO.	PART NO.	DESCRIPTION	Q'TY	REMARKS
1	4GY-22210-12-PD	SHOCK ABSORBER ASSY, REAR	1	LIGHT REDDISH YELLOW SOLID ?
2	4GY-22219-00	BRACKET, UPPER	1	
3	4GY-22212-01-PD	SPRING	1	LIGHT REDDISH YELLOW SOLID ?
4	3LD-22214-01	GUIDE, SPRING 1	1	
5	93399-99936	BEARING	1	
6	93440-30113	CIRCLIP	2	
7	90387-100Y3	COLLAR	2	
8	38Y-22211-00	COVER	2	
9	3XP-22224-00	GUIDE, SPRING 2	1	
10	3SP-22241-00	BOLT 1	1	
11	95617-10200	NUT, SELF-LOCKING	1	
12	90105-10614	BOLT, WASHER BASED	1	
13	90201-08759	WASHER, PLATE	1	
14	4GY-22261-00	DAMPER, SUB TANK	1	
15	90460-55233	CLAMP, HOSE	2	

4MR1700-4210

C14





**FWD**  
4MF2310-6220

FIG. 22 STEERING

REF. NO.	PART NO.	DESCRIPTION	Q'TY	REMARKS
1	93322-00078	BEARING	2	
2	4GY-23416-00	COVER, BALL RACE 2	1	
3	90201-282R3	WASHER, PLATE	1	
4	90179-28543	NUT	2	
5	90202-28216	WASHER, PLATE	1	
6	4GY-23416-00	WASHER, SPECIAL	1	
7	4RR-21435-00	CROWN, HANDLE	1	
8	90179-245F2	NUT	1	
9	95027-06170	EXT. FLANGE	4	
10	359-23442-01	HOLDER, HANDLE LOWER	1	
11	92990-12200	WASHER, PLAIN	1	
12	95617-12100	NUT, U	1	
13	1E6-23441-10-35	HOLDER, HANDLE UPPER	1	STAY
14	95024-08035	BOLT	2	
15	4GY-25279-00	GUIDE, CABLE	1	
16	4RR-28314-00	STAY, HEAD LIGHT 1	1	
17	4RR-2832V-00	STAY, HEAD LIGHT 2	1	
18	4GY-23174-00	STAY, HEADLIGHT	1	
19	97027-06012	BOLT	1	
20	32907-06600	WASHER, PLATE	1	
21	4GY-23389-00	GUIDE, CABLE	1	
22	90105-05101	BOLT, WASHER BASED	1	
23	4GY-23472-00	PROTECTOR	1	
24	4GY-23192-00	BAND	1	
25	9A6-23408-00	STEERING LOCK ASSY	1	
26	4GY-23484-00	CAP, HANDLE LOCK	1	
27	90502-09024	SPRING, CONICAL	1	
28	90208-04129	WASHER, CONICAL SPRING	1	

**C15**

# CONTENTS

## ENGINE

Cylinder Head .....	B2
Cylinder .....	B3
Crankshaft, Piston .....	B4
Valve .....	B5~B6
Camshaft, Chain .....	B7
Oil Pump .....	B8
Intake .....	B9~B10
Carburetor .....	B11~B12
Exhaust .....	B13
Crankcase .....	B14
Crankcase Cover 1 .....	B15~C2
Starter Clutch .....	C3
Clutch .....	C4
Transmission .....	C5
Shift Cam Fork .....	C6
Shift Shaft .....	C7

## CHASSIS

Frame .....	U8~C9
Fender .....	C10
Side Cover .....	C11
Rear Arm .....	C12~C13
Rear Suspension .....	C14
Steering .....	C15~D2
Front Fork .....	D3~D5
Fuel Tank .....	D6
Seat .....	D7
Front Wheel .....	D8
Front Brake Caliper .....	D9

Rear Wheel .....	D10
Rear Brake Caliper .....	D11
Steering Handle, Cable .....	D12
Front Master Cylinder .....	D13
Stand, Footrest .....	D14
Rear Master Cylinder .....	D15
Generator .....	E2
Starting Motor .....	E3
Flasher Light .....	E4
Meter .....	E5
Headlight .....	E6
Taillight .....	E7
Handle Switch, Lever .....	E8
Electrical 1 .....	E9~L10
Electrical 2 .....	E11

## INDEX

Numerical Index .....	M1~M4
-----------------------	-------

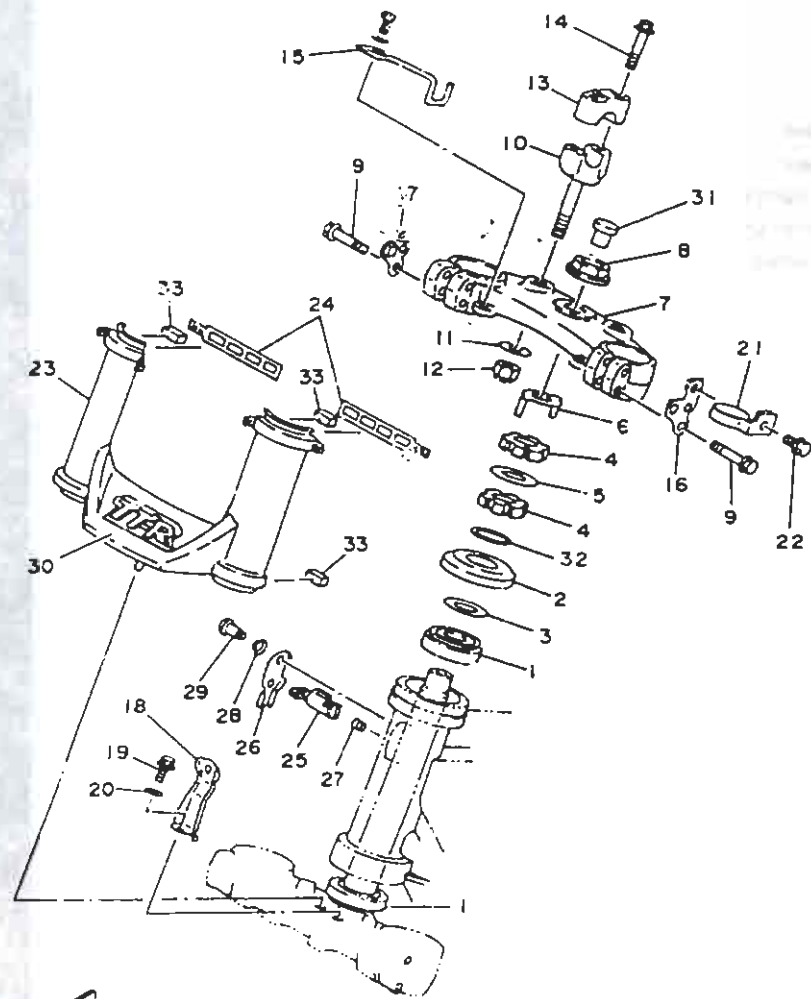


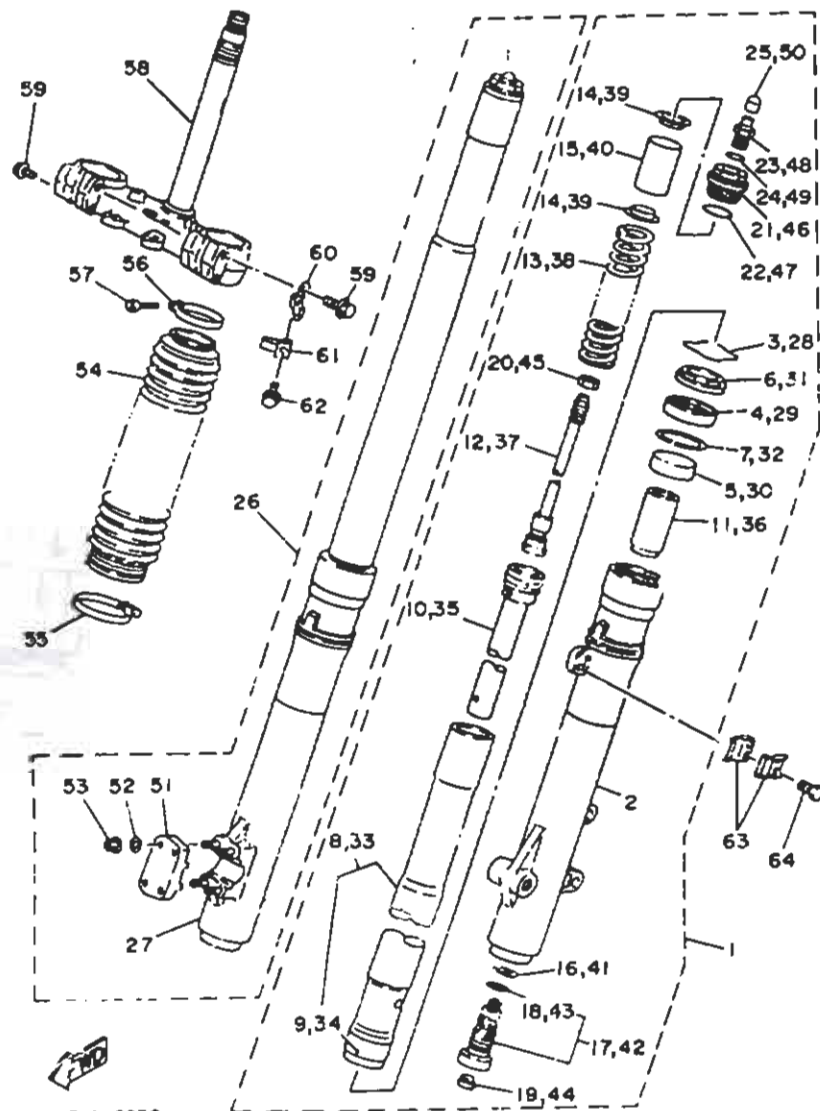
FIG. 22 STEERING

REF. NO.	PART NO.	DESCRIPTION	QTY	REMARKS
29	90269-04003	RIVET	1	
30	4GY-23395-20	EMBLEM	1	
31	3K7-84154-10	GROMMET	1	
32	90201-284R9	WASHER PLATE	1	
33	1HX-28227-00	DAMPER 2	2	

4MR2310-6220

D2



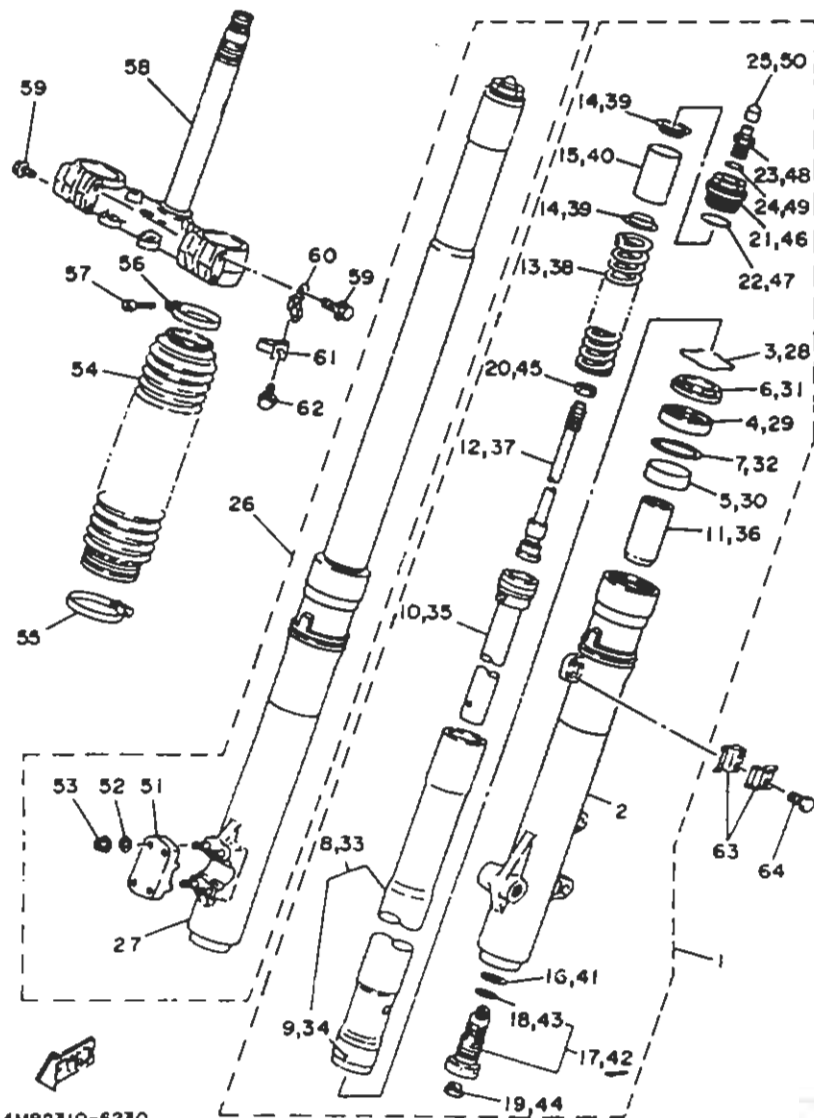


4MR2310-6230

FIG. 23 FRONT FORK

REF. NO.	PART NO.	DESCRIPTION	QTY	REMARKS
1	4GY-23102-01	FRONT FORK ASSY (L.H.)	1	
2	4GY-23126-00	TUBE, OUTER (LEFT)	1	
3	4V4-23153-L0	RING, SNAP	1	
4	2VM-23145-L0	OIL SEAL	1	
5	3XJ-23125-L0	METAL SLIDE 1	1	
6	2VM-23144-L0	SEAL, DUST	1	
7	4V4-23146-L0	WASHER, OIL SEAL	1	
8	4GY-23110-00	INNER TUBE COMP. 1	1	
9	3XJ-23171-L0	PISTON, FRONT FORK	1	
10	4GY-23170-00	CYLINDER COMP., FRONT FORK	1	
11	2VM-23173-L0	SPINDLE, TAPER	1	
12	4GY-23148-01	PISTON ROD ASSY	1	
13	4GY-23141-00	SPRING, FRONT FORK	1	
14	4V4-23142-L0	SEAT, SPRING UPPER	2	
15	4GY-23118-01	SPACER	1	
16	2MH-23112-L0	GASSET	1	
17	4GY-23165-01	VALVE COMP.	1	
18	3XF-23188-00	O-RING	1	
19	55Y-23126-M0	PLUG	1	
20	3XJ-23357-L0	NUT	1	
21	2VM-23111-L0	BOLT, CAP	1	
22	4V4-23188-L0	O-RING	1	
23	23X-23190-L0	AIR VALVE COMP.	1	
24	3J2-23147-00	O-RING	1	
25	2VM-23185-L0	COVER, VALVE	1	
26	4GY-23103-01	FRONT FORK ASSY (R.H.)	1	
27	4GY-23136-00	TUBE, OUTER (RIGHT)	1	
28	4V4-23153-L0	RING, SNAP	1	

D3

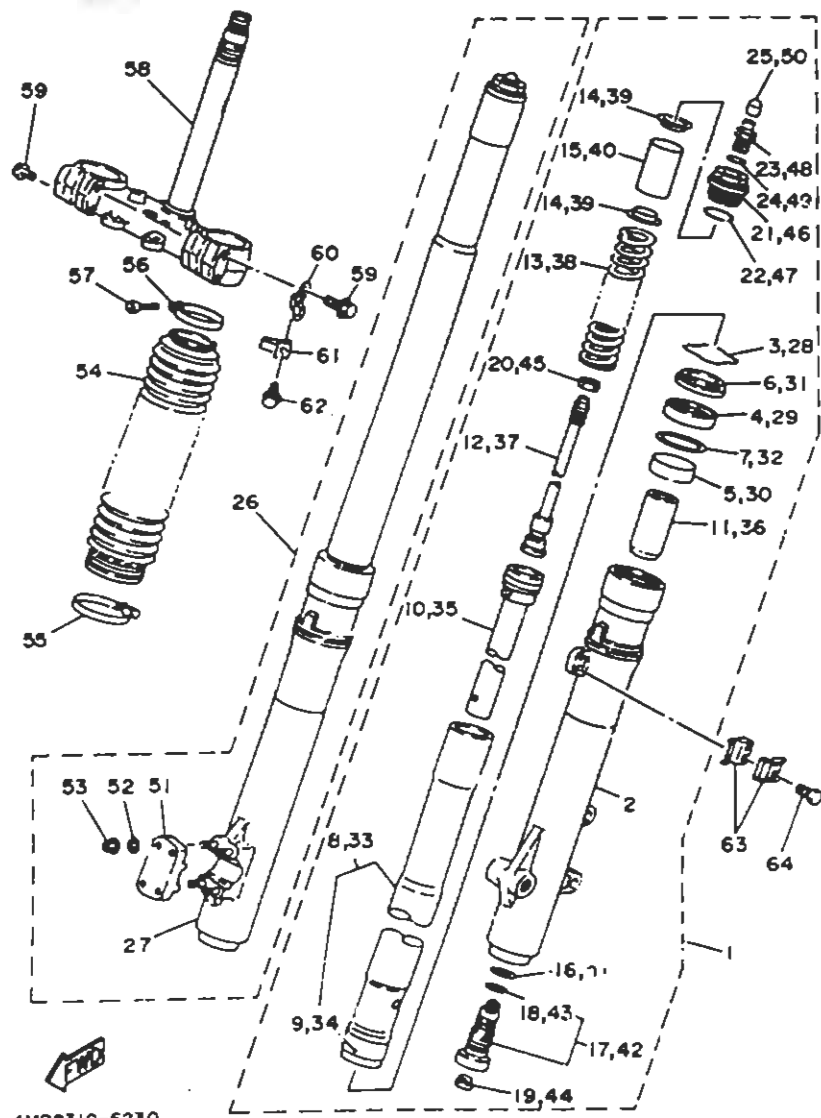


4MR2310-6230

FIG. 23 FRONT FORK

REF. NO.	PART NO.	DESCRIPTION	Q'TY	REMARKS
29	2VM-23145-L0	.OIL SEAL	1	
30	3XJ-23125-L0	.METAL SLIDE 1	1	
31	2VM-23144-L0	.SEAL, DUST	1	
32	4V4-23144-L0	.WASHER, OIL SEAL	1	
33	4GY-23110-00	.INNER TUBE COMP. 1	1	
34	3XJ-23171-L0	.PISTON, FRONT FORK	1	
35	4GY-23170-00	.CYLINDER COMP., FRONT FORK	1	
36	2VM-23173-L0	.SPINDLE, TAPER	1	
37	4GY-23144-01	.PISTON ROD ASSY	1	
38	4GY-23141-00	.SPRING, FRONT FORK	1	
39	4V4-23142-L0	.SEAT, SPRING UPPER	1	
40	4GY-23118-01	.SPACER	1	
41	2WH-2315B-L0	.GASKET	1	
42	4GY-2316A-01	.VALVE COMP.	1	
43	3XP-2318B-00	.O-RING	1	
44	55Y-23126-M0	.PLUG	1	
45	3XJ-23357-L0	.NUT	1	
46	2VM-23111-L0	.BOLT, CAP	1	
47	4V4-23188-L0	.O-RING	1	
48	23X-23190-L0	.AIR VALVE COMP.	1	
49	3J2-23147-00	.O-RING	1	
50	2VM-23185-L0	.COVER, VALVE	1	
51	3XJ-23167-L0	.HOLDER, AXLE	1	
52	92901-06600	.WASHER, PLATE	1	
53	5Y3-23393-00	.NUT, SPECIAL	1	
54	4GY-23191-10	BOOT	1	
55	7LD-23489-00	BAND	1	
56	43M-23192-L0	BAND	1	

D4

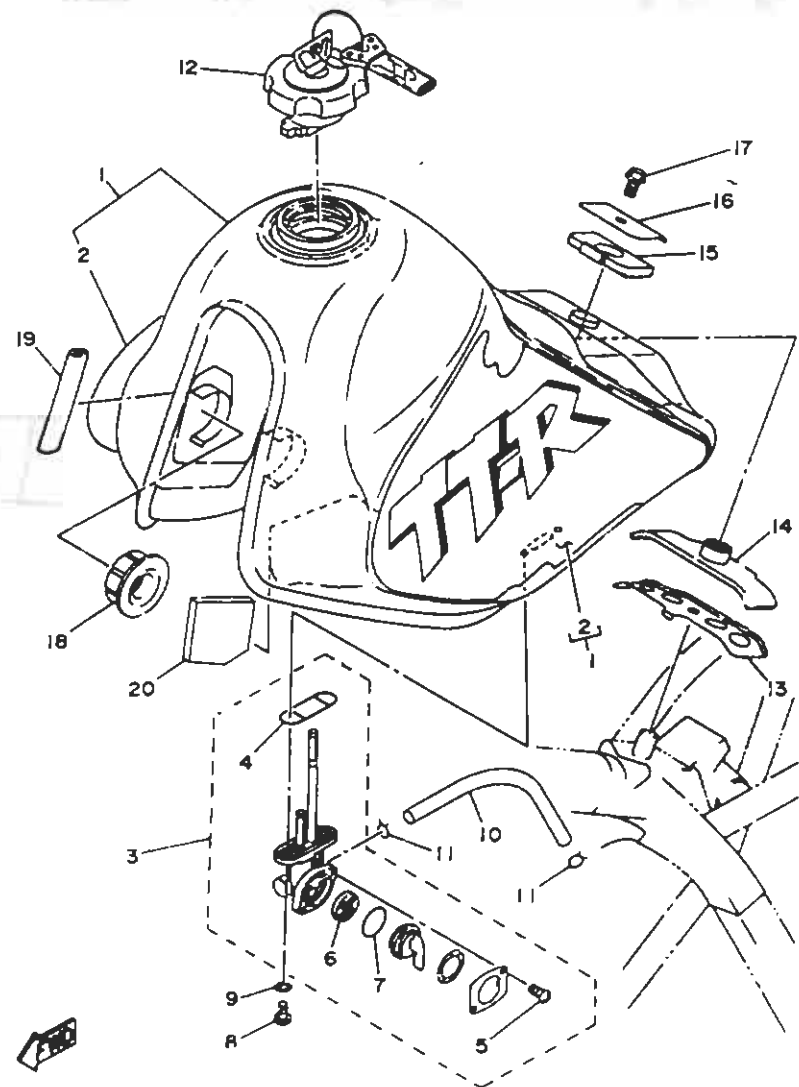


4MR2310-6230

FIG. 23 FRONT FORK

REF. NO.	PART NO.	DESCRIPTION	Q'TY	REMARKS
57	98507-0401B	SCREW, PAN HEAD	2	
58	4RR-23340-00	UNDER BRACKET COMP.	1	
59	95024-08040	BOLT	4	
60	4RR-2331E-00	GUIDE, CABLE	1	
61	4GY-23389-00	GUIDE, CABLE	1	
62	90105-05361	BOLT, WASHER BASED		
63	90465-16258	CLAMP		
64	91317-06012	BOLT		

D5



4MR2310-6240

FIG. 24 FUEL TANK

REF. NO.	PART NO.	DESCRIPTION	Q'TY	REMARKS
1	4GY-24110-00-03	FUEL TANK COMP.	1	PURPLISH WHITE SOLID
2	4RR-24240-00	.GRAPHIC SET	1	
3	23F-24500-01	FUEL COCK ASSY 1	1	
4	4Y8-24512-00	.O-RING	1	
5	98503-03008	.SCREW, PAN HEAD	2	
6	3AJ-24523-00	.VALVE	1	
7	3AJ-24534-00	.SEAL, ROCK	1	
8	90149-06011	SCREW	2	
9	90702-051R7	WASHER, PLATE	2	
10	90445-100E9	HOSE	1	
11	90467-09006	CLIP	1	
12	11M-24602-03	CAP ASSY	1	
13	4GY-241R7-00	WASHER, SPECIAL	1	
14	11M-241B2-0L	DAMPER, LOCATING	1	
15	30X-241R7-01	DAMPER, LOCATING	1	
16	30X-241B-01	WASHER, SPECIAL	1	
17	95817-06012	BOLT, FLANGE	1	
18	4H7-241C1-00	DAMPER, LOCATING	2	
19	4GY-241BB-00	MOLD, FUEL TANK	1	
20	29X-14425-00	DAMPER	1	

D6



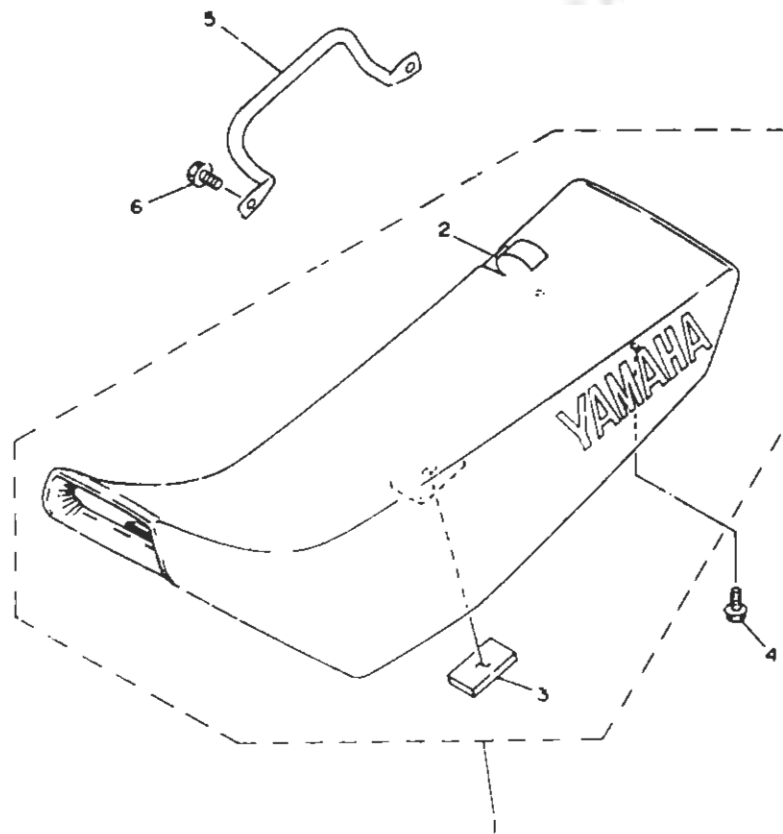


FIG. 25 SEAT

REF. NO.	PART NO.	DESCRIPTION	Q'TY	REMARKS
1	4GY-24730-10	DOUBLE SEAT ASSY	1	
2	4GY-24731-00	.COVER, SEAT	1	
3	3TB-24185-00	.DAMPER, LOCATING 5	1	
4	95807-06016	BOLT, FLANGE	2	
5	4GY-2127A-00	HANDLE, STANDING	1	
6	95817-08016	BOLT, FLANGE	1	



4MR1700-4250

D7

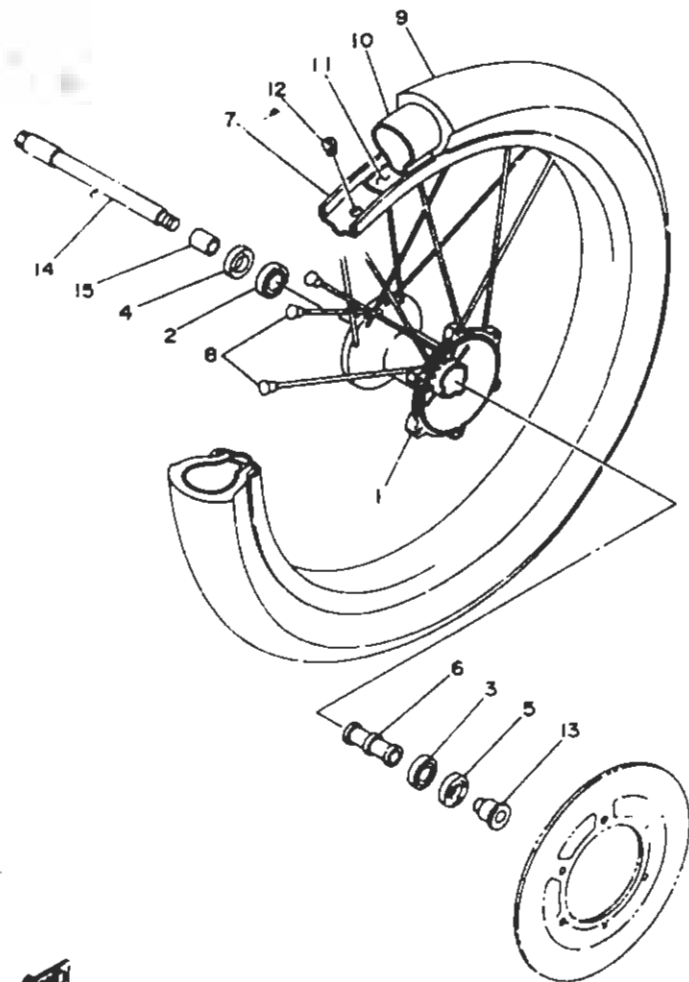


FIG. 26 FRONT WHEEL

REF. NO.	PART NO.	DESCRIPTION	Q'TY	REMARKS
1	4GY-25111-00-35	HUB, FRONT	1	SILVER
2	93306-20226	BEARING	1	KOYO
3	93306-00316	BEARING	1	
4	93106-20021	OIL SEAL	1	
5	93106-22032	OIL SEAL	1	
6	90560-15240	SPACER	1	
7	9441F-21518	RIM (1.60-21)	1	
8	3LD-251~4-00	SPOKE SET, FRONT	1	
9	94130-2105H	TIRE (3.00-21 51P TW51)	1	BRIDGESTONE
10	94227-2112B	TUBE (2.75-21)	1	
11	94330-21084	BAND, RIM (3.00-21)	1	
12	90480-1006B	GROMMET	1	
13	90387-1501K	COLLAR	1	
14	4GY-251B1-00	AXLE, WHEEL	1	
15	90387-156R7	COLLAR	1	

4GY1010-326C

D8

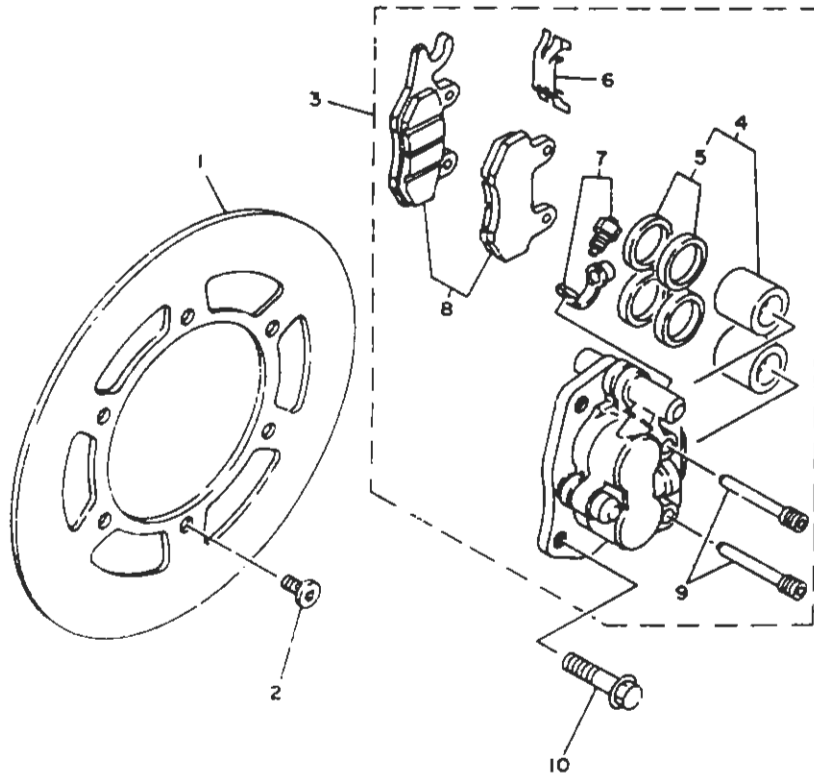


FIG. 27 FRONT BRAKE CALIPER

REF. NO.	PART NO.	DESCRIPTION	Q'TY	REMARKS
1	3XP-2582T-00	DISC, BRAKE	1	
2	9C109-065F3	BOLT	6	
3	4GY-2580T-01	CALIPER ASSY (LEFT)	1	
4	4EW-W0057-00	.PISTON ASSY, CALIPER	1	
5	3JD-W0047-00	.CALIPER SEAL KIT	1	
6	3SP-25919-D1	.SUPPORT, PAD	1	
7	36T-W0048-00	.BLEED SCREW KIT	1	
8	4GY-W0045-00	.BRAKE PAD KIT	1	
9	3SD-25933-0C	.PIN, PAD	2	
10	90105-10"16	BOLT, WASHER BRGSD	2	

4GY1010-3270

D9

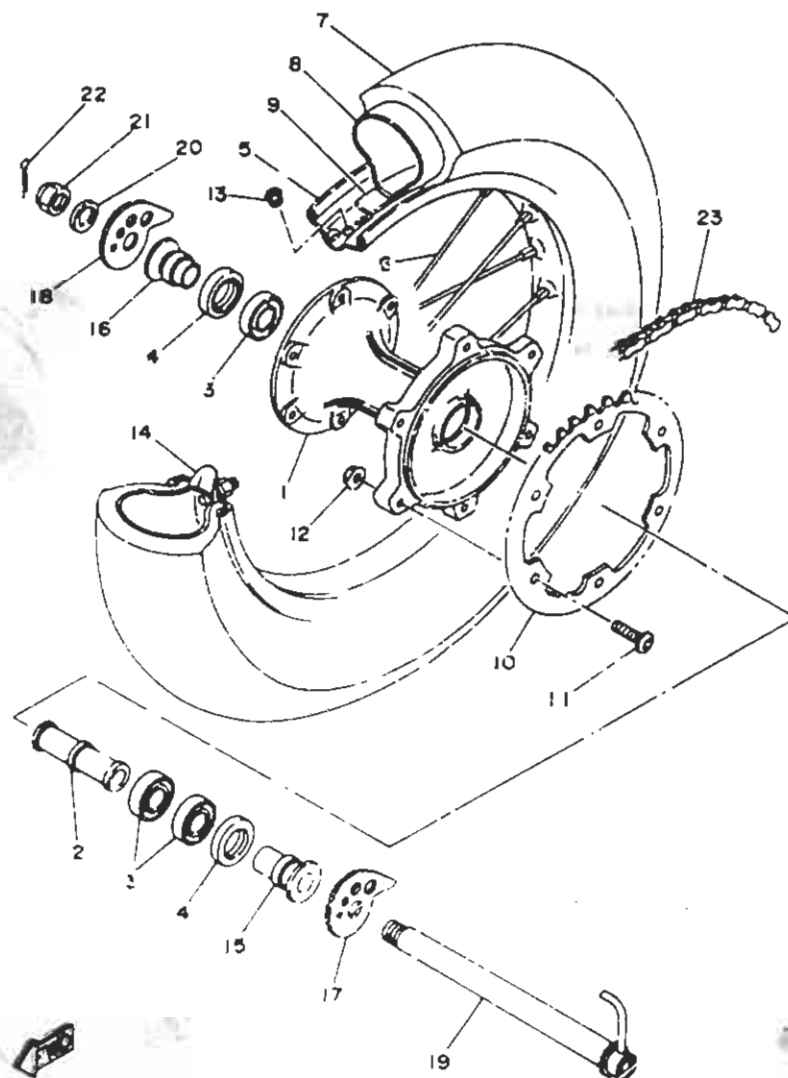


FIG. 28 REAR WHEEL

REF. NO.	PART NO.	DESCRIPTION	Q'TY	REMARKS
1	4GY-25311-00-35	HUB, REAR	1	SILVER
2	90560-20278	SPACER	1	
3	93306-07202	BEARING	3	
4	93106-28023	OIL SEAL	2	
5	94421-18519	RIM (2.15-18)	1	
6	2VN-25304-00	SPOKE SET, REAR	1	
7	94146-1805J	TIRE (4.60-18 63P TW52B)	1	BRIDGESTONE
8	94212-18188	TUBE (1.20/90-18)	1	
9	94340-18086	BAND, RIM (4.00-18)	1	
10	2YY-25444-01	SPROCKET, DRIVEN (44T)	1	
11	90110-08071	BOLT, HEXAGON SOCKET HEAD	6	
12	95617-08200	NUT, SELF-LOCKING	6	
13	90480-10068	GROMMET	1	
14	39X-25394-01	SPACER, BEAD	1	
15	90387-2001U	COLLAR	1	
16	90387-2001V	COLLAR	1	
17	38N-25388-00	PULLER, CHAIN 1	1	
18	38N-25389-00	PULLER, CHAIN 2	1	
19	4GT-25381-00	AXLE, WHEEL	1	
20	90201-204M9	WASHER, PLATE	1	
21	90171-18053	NUT, CASTLE	1	
22	91401-25030	PIN, COTTER	1	
23	94581-51106	CHAIN, DRIVE (10520V2-106L)	1	

4GT-2010-3280

D10



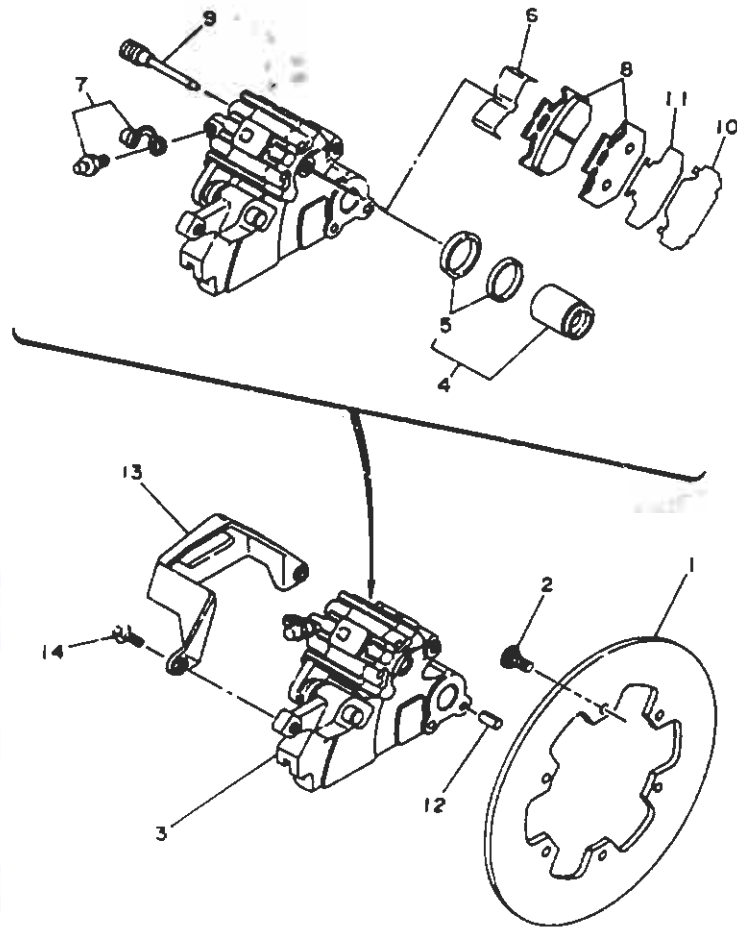


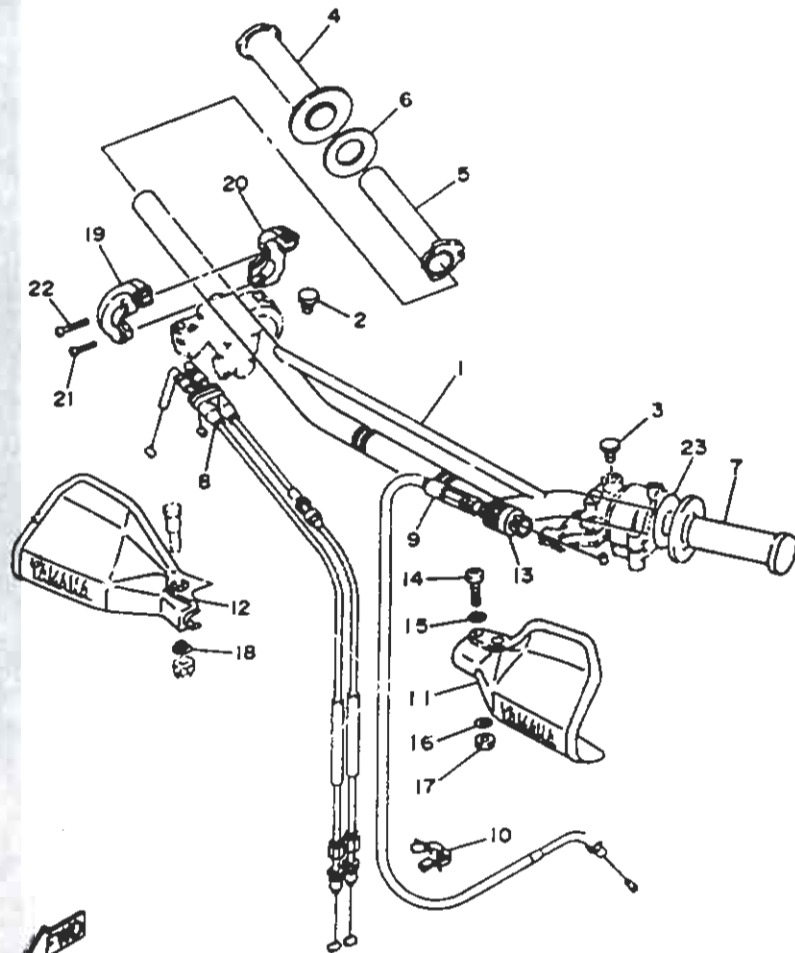
FIG. 29 REAR BRAKE CALIPER

REF. NO.	PART NO.	DESCRIPTION	Q'TY	REMARKS
1	4GY-2582W-00	DISC, REAR BRAKE 2	1	
2	90109-065F3	BOLT	6	
3	4GY-2580W-00	CALIPER ASSY, REAR 2	1	
4	3SF-W0057-50	.PISTON ASSY, CALIPER	1	
5	3JD-W0047-50	.CALIPER SEAL KIT	1	
6	4GY-25919-50	.SUPPORT, PAD	1	
7	36Y-W0043-00	.BLEED SCREW KIT	1	
8	4GY-W0046-00	.BRAKE PAD KIT 2	1	
9	3SP-25924-50	.PIN, PAD	2	
10	4GY-25827-50	.SHIM, CALIPER	1	
11	4GY-22856-50	.INSULATOR, HEAT	1	
12	91690-60016	PIN, SPRING	2	
13	4GY-27491-00	PROTECTOR	1	
14	95027-06016	BOLT	2	

4GY3010-4310

D11

FIG. 30 STEERING HANDLE, CABLE



REF. NO.	PART NO.	DESCRIPTION	Q'TY	REMARKS
1	4GY-26111-00	HANDLEBAR	1	
2	90338-09012	PLUG	1	
3	90338-09012	PLUG	1	
4	4GY-26242-00	GRIP (RIGHT)	1	
5	3Y1-26243-01	TUBE, THROTTLE GUIDE	1	
6	3Y1-26249-00	RING, LEAF	1	
7	4GY-26241-00	GRIP (LEFT)	1	
8	4GY-26302-01	THROTTLE CABLE ASSY	1	
9	4GY-26335-01	CABLE, CLUTCH	1	
10	90464-10193	CLAMP	1	
11	38N-26141-20	GUARD, BRUSH 1	1	PURPLISH WHITE SOLID 1
12	38N-26142-20	GUARD, BRUSH 2	1	PURPLISH WHITE SOLID 1
13	1E6-26342-00	BOOT, CABLE	1	
14	98507-06035	SCREW, PAN HEAD	1	
15	92907-06600	WASHER, PLATE	1	
16	92907-06600	WASHER, PLATE	1	
17	95617-06100	NUT, U	1	
18	90387-06530	COLLAR	1	
19	34K-26281-00	CAP, GRIP UPPER	1	
20	1VJ-26282-00	CAP, GRIP LOWER	1	
21	98507-05020	SCREW, PAN HEAD	1	
22	98507-05025	SCREW, PAN HEAD	1	
23	4PP-26129-00	WASHER	1	

4PP2310-6300

D12

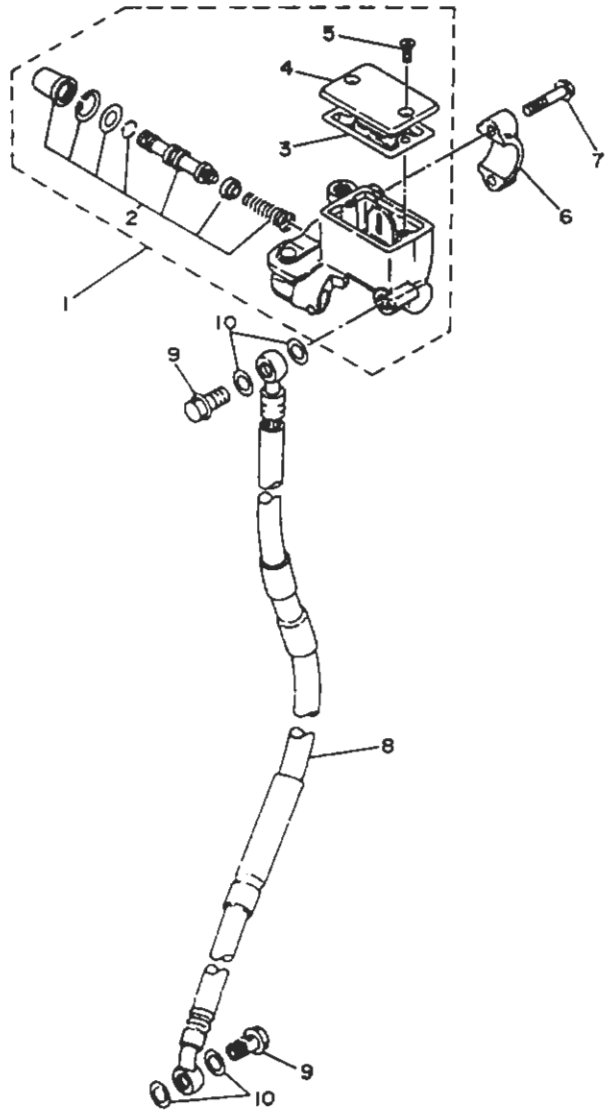
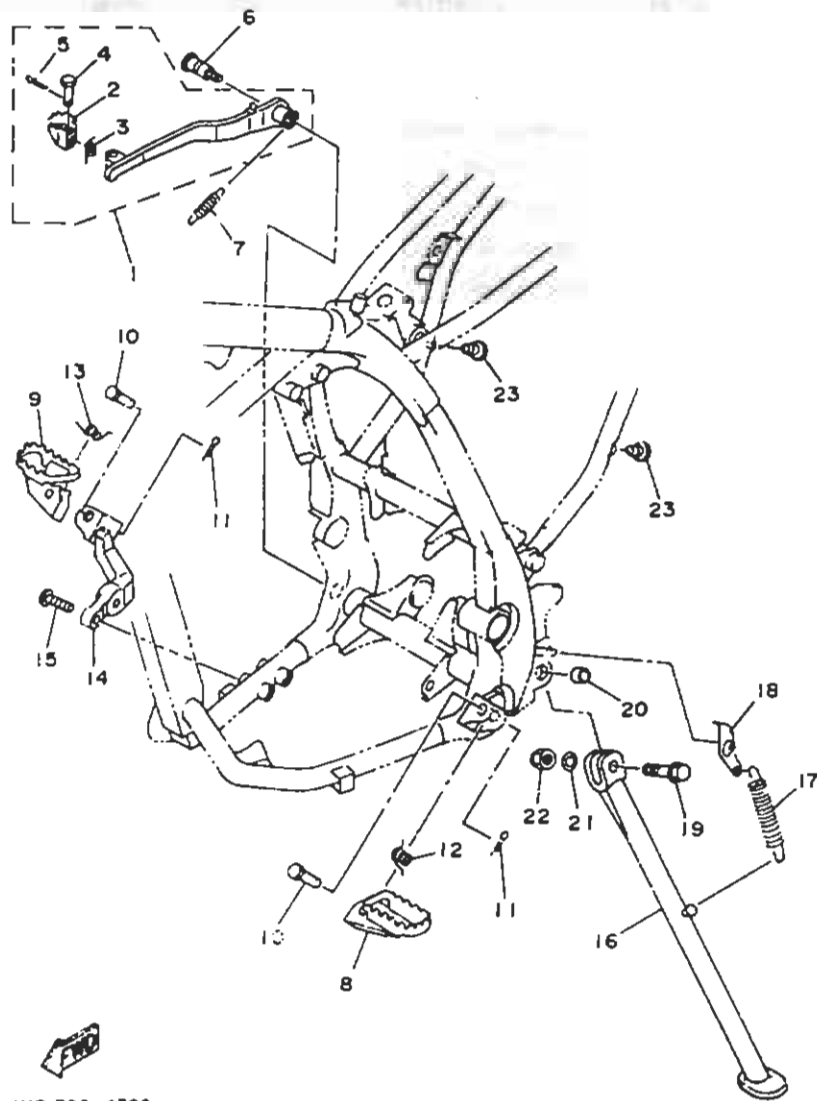


FIG. 31 FRONT MASTER CYLINDER

REF. NO.	PART NO.	DESCRIPTION	Q'TY	REMARKS
1	4GY-2597G-01	MASTER CYLINDER SUB ASSY	1	
2	3RW-W0041-02	.CYLINDER KIT, MASTER	1	
3	3RW-25854-00	.DIAPHRAGM, RESERVOIR	1	
4	4GY-25852-00	.CAP, RESERVOIR	1	
5	98707-04012	.SCREW, FLAT HEAD	2	
6	56A-25867-00	BRACKET, MASTER CYLINDER	1	
7	95D27-06D25	BOLT, FLANGE	1	
8	4GY-25872-11	HOSE, BRAKE 1	1	
9	904G1-10159	BOLT, UNION	2	
10	90201-10118	WASHER, PLATE	4	

4MR1700-4310

D13



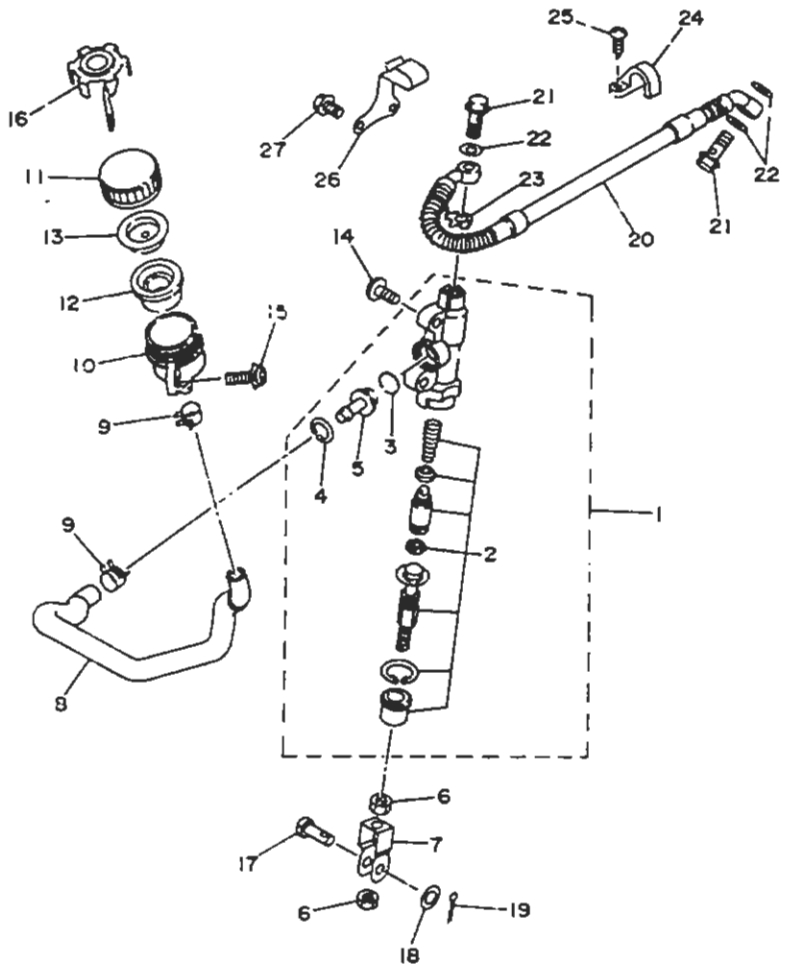
4MR1700-4320

FIG. 32 STAND, FOOTREST

REF. NO.	PART NO.	DESCRIPTION	Q'TY	REMARKS
1	4GY-27200-00	PEDAL, BRAKE	1	
2	55V-27242-00	PEDAL, BRAKE	1	
3	90508-14352	SPRING, TORSION	1	
4	91701-06022	PIN, CLEVIS	1	
5	91490-20020	PIN, COTTER	1	
6	4GY-27217-00	BOLT	1	
7	90506-20369	SPRING, TENSION	1	
8	40A-27411-00	FOOTREST 1	1	
9	4GY-27421-00	FOOTREST 2	1	
10	90240-10117	PIN, CLEVIS	2	
11	91401-25020	PIN, COTTER	2	
12	90508-28777	SPRING, TORSION	1	
13	90508-264A7	SPRING, TORSION	1	
14	4GY-27422-00	BRACKET, FOOTREST 2	1	
15	90111-10008	BOLT	2	
16	4GY-27311-01	STAND, SIDE	1	
17	90506-35473	SPRING, TENSION	1	
18	4GY-27315-00	LINK, SIDE STAND	1	
19	90105-10728	BOLT, WASHER BASED	1	
20	90387-1003G	COLLAR	1	
21	92990-10200	WASHER, PLAIN	1	
22	95617-10100	NUT, U	1	
23	90338-07124	PLUG	2	

D14





**FWD**  
40Y1010-3330

FIG. 33 REAR MASTER CYLINDER

REF. NO.	PART NO.	DESCRIPTION	Q'TY	REMARKS
1	4GY-25831-00	RR. MASTER CYLINDER ASSY	1	
2	4GY-W0042-00	..CYLINDER KIT, MASTER	1	
3	93210-15620	..D-RING	1	
4	2VN-25866-00	..CIRCLIP	1	
5	3FA-2582A-50	..JOINT	1	
6	9F317-05660	NUT	2	
7	..GY-27222-00	JOINT	1	
8	4GY-25895-00	HOSE, RESERVOIR	1	
9	9C467-11044	CLIP	2	
10	2VN-25894-00	TANK, RESERVOIR	1	
11	3XP-25852-50	CAP, RESERVOIR	1	
12	2VN-25854-00	DIAPHRAGM, RESERVOIR	1	
13	2VN-25855-00	BUSH, DIAPHRAGM	1	
14	92017-08016	BOLT, BUTTON HEAD	2	
15	95807-06014	BOLT, FLANGE	1	
16	3ET-25888-00	COVER, RESERVOIR TANK	1	
17	90240-08120	PIN, CLEVIS	1	
18	92901-08600	WASHER, PLATE	1	
19	91401-25020	PIN, COTTER	1	
20	4GY-25873-01	HOSE, BRAKE 2	1	
21	90401-10159	BOLT, UNION	2	
22	90201-10118	WASHER, PLATE	3	
23	4FU-25844-00	WASHER, LOCK	1	
24	2VM-25876-00	HOLDER, BRAKE HOSE 2	1	
25	97707-50510	SCREW, TAPPING	2	
26	9C462-12195	CLAMP	1	
27	95027-06012	BOLT	2	

**D15**

# CONTENTS

## ENGINE

Cylinder Head.....	B2
Cylinder .....	B3
Crankshaft, Piston.....	B4
Valve .....	B5~B6
Camshaft, Chain.....	B7
Oil Pump .....	B8
Intake .....	B9~B10
Carburetor .....	B11~B12
Exhaust .....	B13
Crankcase .....	B14
Crankcase Cover 1.....	B15~C2
Starter Clutch .....	C3
Clutch .....	C4
Transmission.....	C5
Shift Cam. Fork .....	C6
Shift Shaft.....	C7

Rear Wheel .....	D10
Rear Brake Caliper.....	D11
Steering Handle, Cable.....	D12
Front Master Cylinder.....	D13
Stand, Footrest.....	D14
Rear Master Cylinder.....	D15
Generator .....	E2
Starting Motor.....	E3
Flasher Light.....	E4
Meter .....	E5
Headlight.....	E6
Taillight .....	E7
Handle Switch, Lever.....	E8
Electrical 1 .....	E9~E10
Electrical 2 .....	F11

## CHASSIS

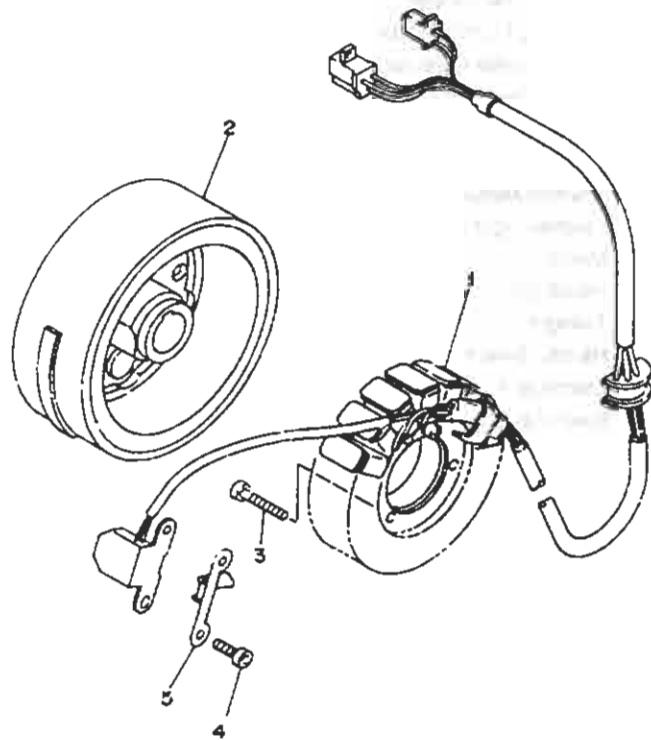
Frame .....	C8~C9
Fender .....	C10
Side Cover .....	C11
Rear Arm .....	C12~C13
Rear Suspension.....	C14
Steering .....	C15~D2
Front Fork.....	D3~D5
Fuel Tank .....	D6
Seat .....	D7
Front Wheel.....	D8
Front Brake Caliper.....	D9

## INDEX

Numerical Index .....	M1~M4
-----------------------	-------

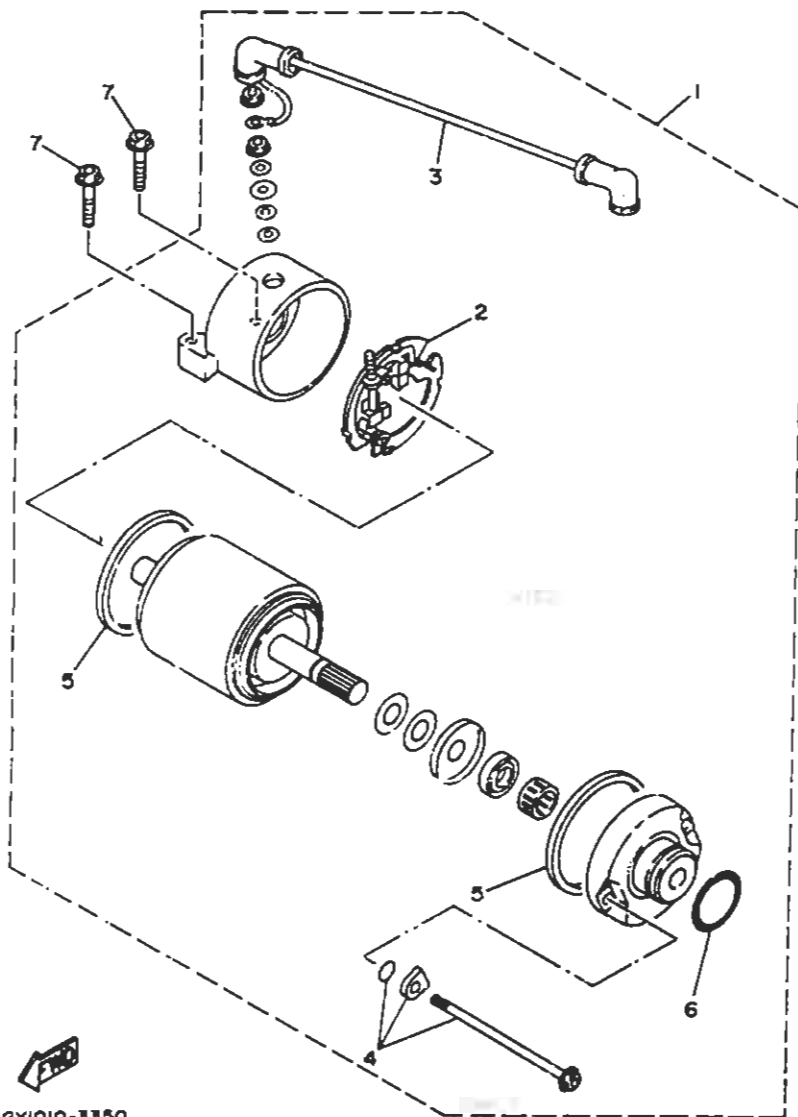
FIG. 34 GENERATOR

REF. NO.	PART NO.	DESCRIPTION	Q'TY	REMARKS
1	4GY-81410-01	STATOR ASSY	1	
2	4RR-81450-00	ROTOR ASSY	1	
3	91317-05025	BOLT	3	
4	91317-05012	BOLT	2	
5	90465-08358	CLAMP	1	



  
4GY1010-3340

**E2**



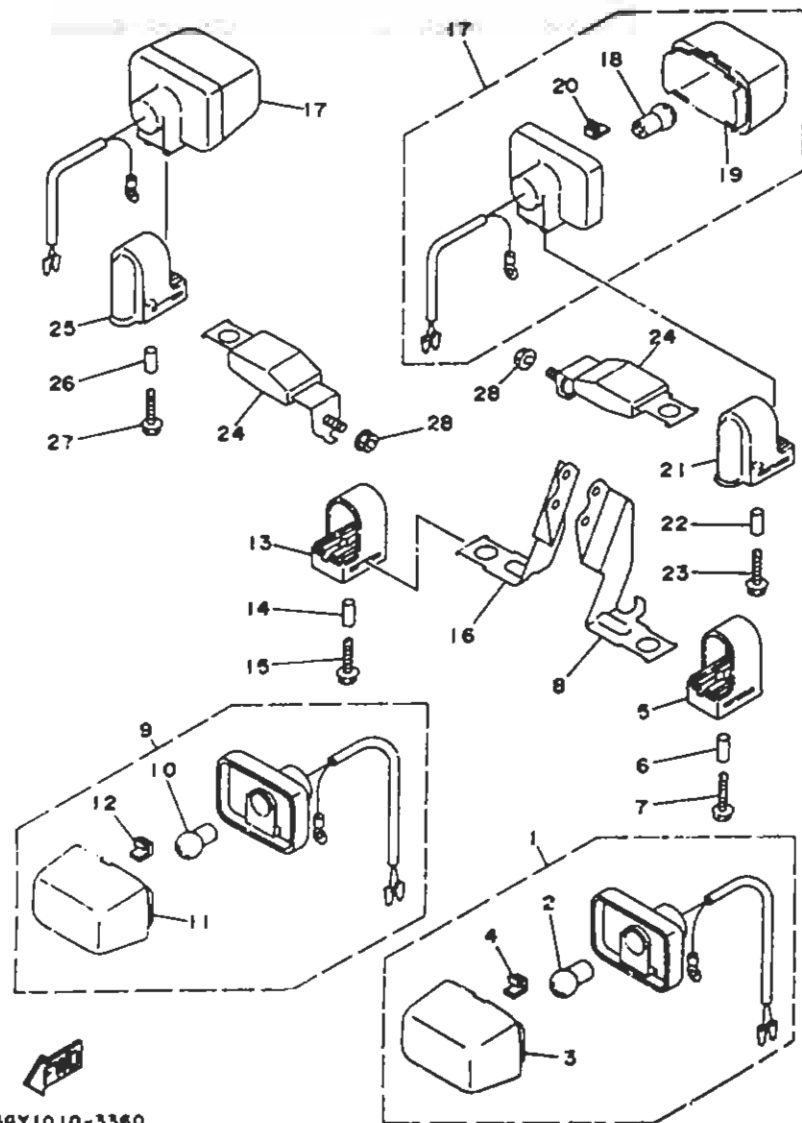
4GY1010-3350

FIG. 35 STARTING MOTOR

REF. NO.	PART NO.	DESCRIPTION	Q'TY	REMARKS
1	4GY-81800-01	STARTING MOTOR ASSY	1	
2	3XS-81840-00	.BRUSH HOLDER ASSY	1	
3	4GY-81815-01	.CORD, STARTER MOTOR	1	
4	3WP-81826-00	.BOLT	2	
5	11H-81844-00	.GASKET	2	
6	26H-81847-00	.O-RING	1	
7	90105-06717	BOLT, WASHER BASED	2	

E3





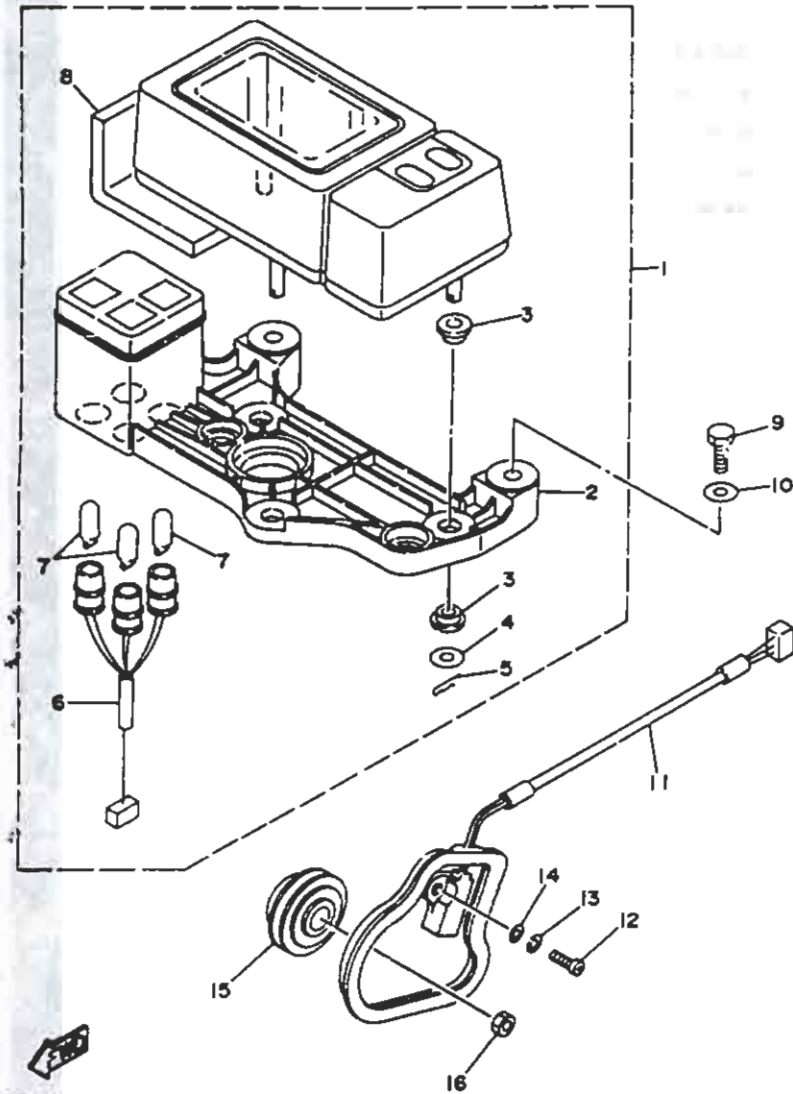
4GY1010-3360

FIG. 36 FLASHER LIGHT

REF. NO.	PART NO.	DESCRIPTION	Q'TY	REMARKS
1	4AY-83310-10	FLASHER LIGHT ASSY 1	1	
2	851-84744-00	.BULB (12V-10W)	3	
3	2T4-83312-00	.LENS, FLASHER	1	
4	1KH-83345-00	.PLUG, BLIND	1	
5	1KH-83321-00	DAMPER, FLASHER 1	1	
6	90387-05285	COLLAR	1	
7	90159-05011	SCREW, WITH WASHER	1	
8	4GY-83318-00	STAY, FLASHER 1	1	
9	4GY-83320-00	FRONT FLASHER LIGHT ASSY 2	1	
10	851-84744-00	.BULB (12V-10W)	1	
11	2T4-83312-00	.LENS, FLASHER	1	
12	1KH-83345-00	.PLUG, BLIND	1	
13	1KH-83321-00	DAMPER, FLASHER 1	1	
14	90387-05285	COLLAR	1	
15	90159-05011	SCREW, WITH WASHER	1	
16	4GY-83328-00	STAY, FLASHER 2	1	
17	3XP-83310-00	FRONT FLASHER LIGHT ASSY 1	2	
18	851-84744-00	.BULB (12V-10W)	1	
19	2T4-83312-00	.LENS, FLASHER	1	
20	1KH-83345-00	.PLUG, BLIND	1	
21	1KH-83321-00	DAMPER, FLASHER 1	1	
22	90387-05285	COLLAR	1	
23	90159-05011	SCREW, WITH WASHER	1	
24	4GY-83368-00	STAY, FLASHER 1	2	
25	1KH-83321-00	DAMPER, FLASHER 1	1	
26	90387-05285	COLLAR	1	
27	90159-05011	SCREW, WITH WASHER	1	
28	95707-08500	NUT, FLANGE	2	

E4

FIG. 37 METER



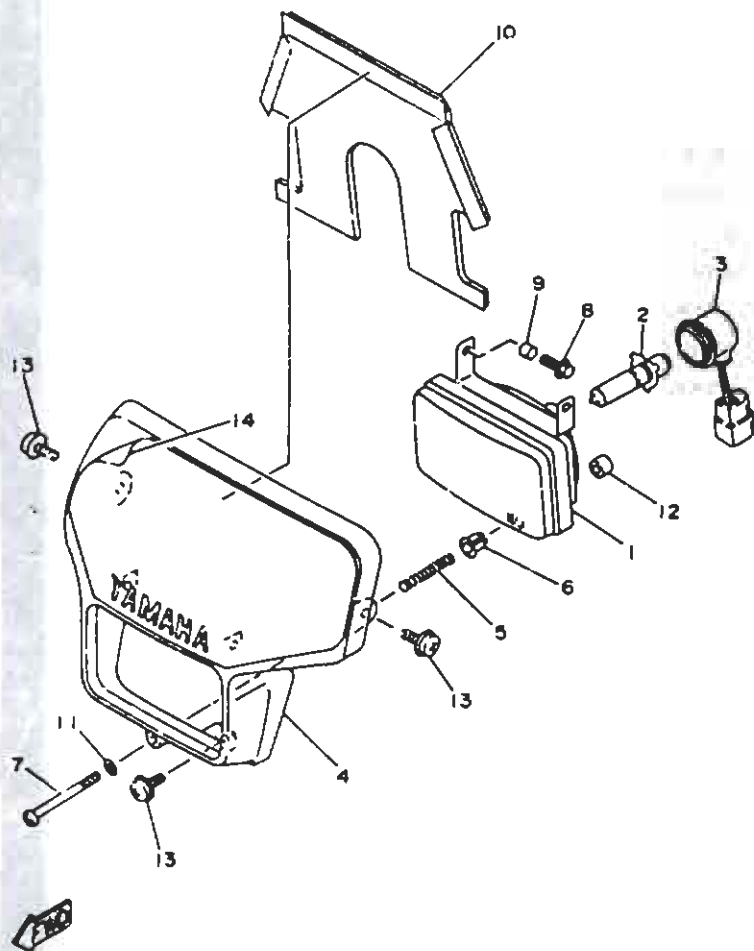
REF. NO.	PART NO.	DESCRIPTION	Q'TY	REMARKS
1	4GY-83500-21	SPEEDOMETER ASSY	1	
2	4GY-83519-21	.BRACKET, METER	1	
3	4GY 83523-00	.DAMPER	6	
4	90201-05C33	.WASHER, PLATE	3	
5	9046B-10050	.CLIP	3	
6	4GY-83586-20	.SOCKET ASSY	1	
7	4GY-83517-20	.BULB (12V-3W)	3	
8	4GY-83513-00	.DAMPER	1	
9	97027-06030	BOLT	2	
10	92907-06600	WASHER, PLATE	2	
11	4GY-83755-01	SENSOR, SPEED	1	
12	98507-05016	SCREW, PAN HEAD	1	
13	92907-05100	WASHER, SPRING	1	
14	92907-052C0	WASHER, PLAIN	1	
15	4GY-8354W-00	ROTOR	1	
16	95307-10700	NU	1	

4GY1010-3370

E5

FIG. 38 HEADLIGHT

REF. NO.	PART NO.	DESCRIPTION	Q'TY	REMARKS
1	4GY-84320-00	LENS ASSY	1	
2	3FW-84314-00	BULB, HEADLIGHT	1	
3	3FW-84340-00	SOCKET CORD ASSY	1	
4	4GY-84311-00	BODY, HEADLIGHT	1	
5	4GY-84332-00	SPRING, SCREW	1	
6	50W-84334-00	NUT, ADJUSTING	1	
7	98580-04055	SCREW, PAN HEAD	1	
8	55U-84337-00	BOLT, SPECIAL	2	
9	55U-84328-00	SPACER	2	
10	3XP-84196-00	COVER, SOCKET	1	
11	92901-04600	WASHER, PLATE	1	
12	2RR-84178-00	PLUG	1	
13	90159-06189	SCREW, WITH WASHER	3	
14	4RR-28391-00	GRAPHIC 1	1	



4MR2310-6390

Handwritten text, possibly a signature or date.

Handwritten text, possibly a signature or date.

Small handwritten mark or characters.



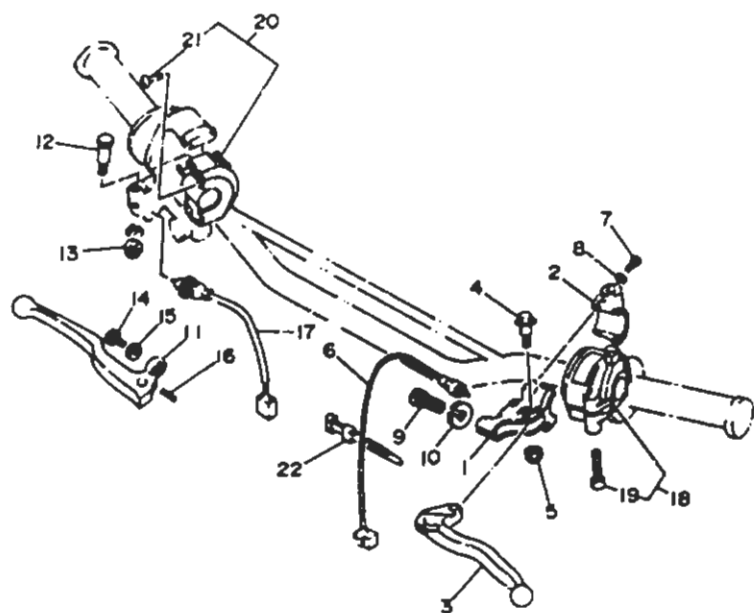
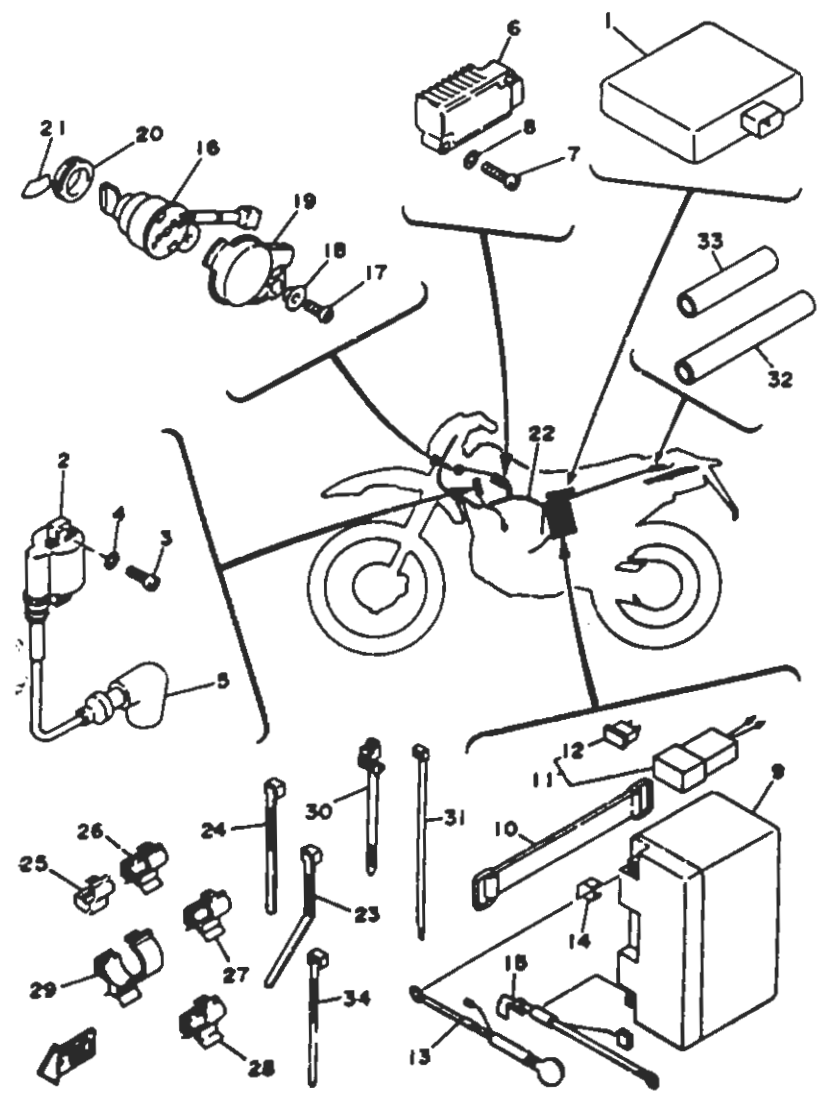


FIG. 40 HANDLE SWITCH, LEVER

REF. NO.	PART NO.	DESCRIPTION	Q'TY	REMARKS
1	11N-82911-00	HOLDER, LEVER 1	1	
2	33G-82913-00	HOLDER, LEVER LOWER 1	1	
3	4GY-83912-00	LEVER 1	1	
4	90169-06799	BOLT	1	
5	95617-06100	NUT, U	1	
6	4GY-82917-00	SWITCH	1	
7	98507-05020	SCREW, PAN HEAD	2	
8	98907-05100	WASHER, SPRING	2	
9	90123-08046	BOLT	1	
10	90179-08148	NUT	1	
11	15Y-83922-00	LEVER 2	1	
12	90109-062A8	BOLT	1	
13	95617-06100	NUT, U	1	
14	90143-06024	SCREW, HEXAGON	1	
15	90170-06010	NUT	1	
16	58211-10312	SPRING, COMPRESSION	1	
17	21J-83980-00	FRONT STOP SWITCH ASSY	1	
18	48K-83972-00	SWITCH, HANDLE 4	1	
19	98507-05030	SCREW, PAN HEAD	2	
20	4GY-83975-00	SWITCH, HANDLE 2	1	
21	98507-05018	SCREW, PAN HEAD	2	
22	437-83936-01	BAND, SWITCH CORD	4	

48Y1010-340G

E8

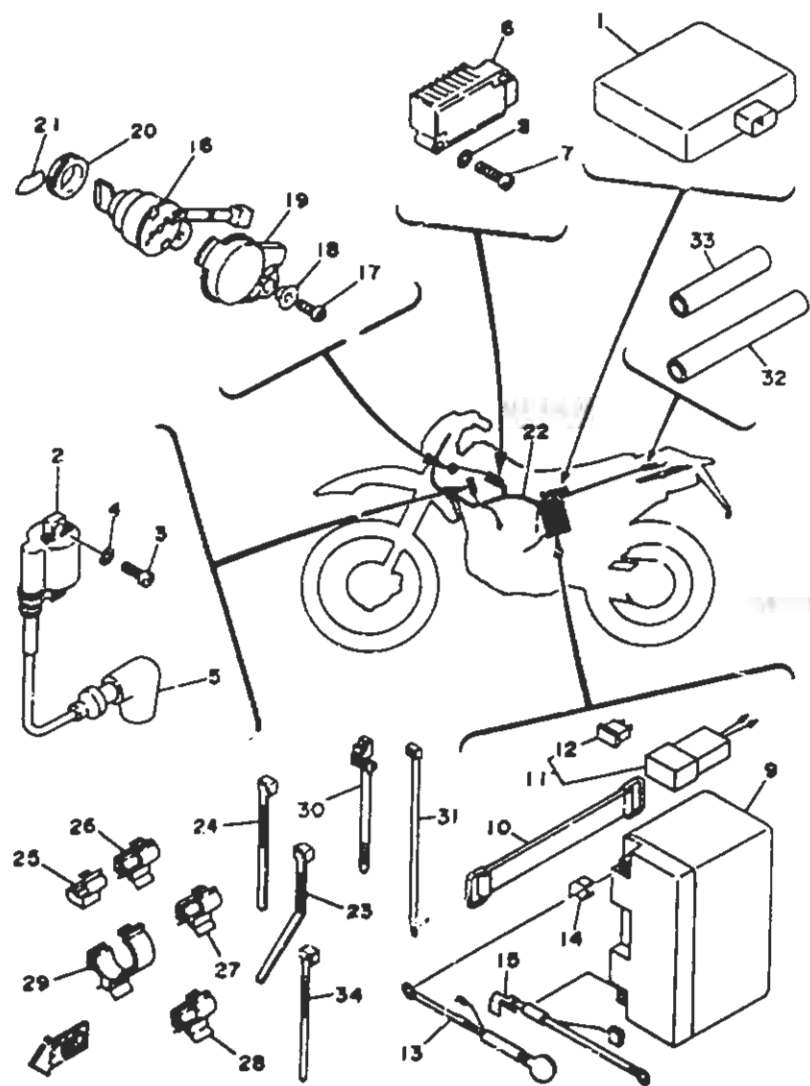


4MR2310-6410

FIG. 41 ELECTRICAL 1

REF. NO.	PART NO.	DESCRIPTION	Q'TY	REMARKS
1	4GY-85540-00	C.D.I. UNIT ASSY	1	
2	1UY-82310-41	IGNITION COIL ASSY	1	
3	98517-06020	SCREW, PAN HEAD	2	
4	92907-06600	WASHER, PLATE	2	
5	11N-82370-00	PLUG CAP ASSY	1	
6	3TJ-81960-01	RECTIFIER & REGULATOR ASSY	1	
7	98517-06030	SCREW, PAN HEAD	2	
8	92907-06600	WASHER, PLATE	2	
9	4GY-82100-00	BATTERY (GS 67B-4)	1	
10	133-82131-00	BAND, BATTERY	1	
11	4RR-82150-00	FUSE HOLDER ASSY	1	
12	36Y-R2151-00	FUSE (15A-BL)	1	
13	4RR-82115-00	WIRE, PLUS LEAD	1	
14	4GY-82119-00	COVER, LEAD WIRE	1	
15	4GY-82116-00	WIRE, MINUS LEAD	1	
16	4GY-82510-00	MAIN SWITCH ASSY	1	
17	90149-06228	SCREW	1	
18	90381-08710	COLLAR	1	
19	4GY-82568-01	COVER, MAIN SWITCH	1	
20	90480-24222	GROUND	1	
21	4GY-82565-00	EMBLEM, MAIN SWITCH	1	
22	4RR-82590-00	WIRE HARNESS ASSY	1	
23	17R-82591-00	BAND	2	
24	437-83936-01	BAND, SWITCH CORD	1	
25	90464-05188	CLAMP	1	
26	90464-08189	CLAMP	2	
27	90464-15195	CLAMP	1	
28	90464-15192	CLAMP	4	

E9

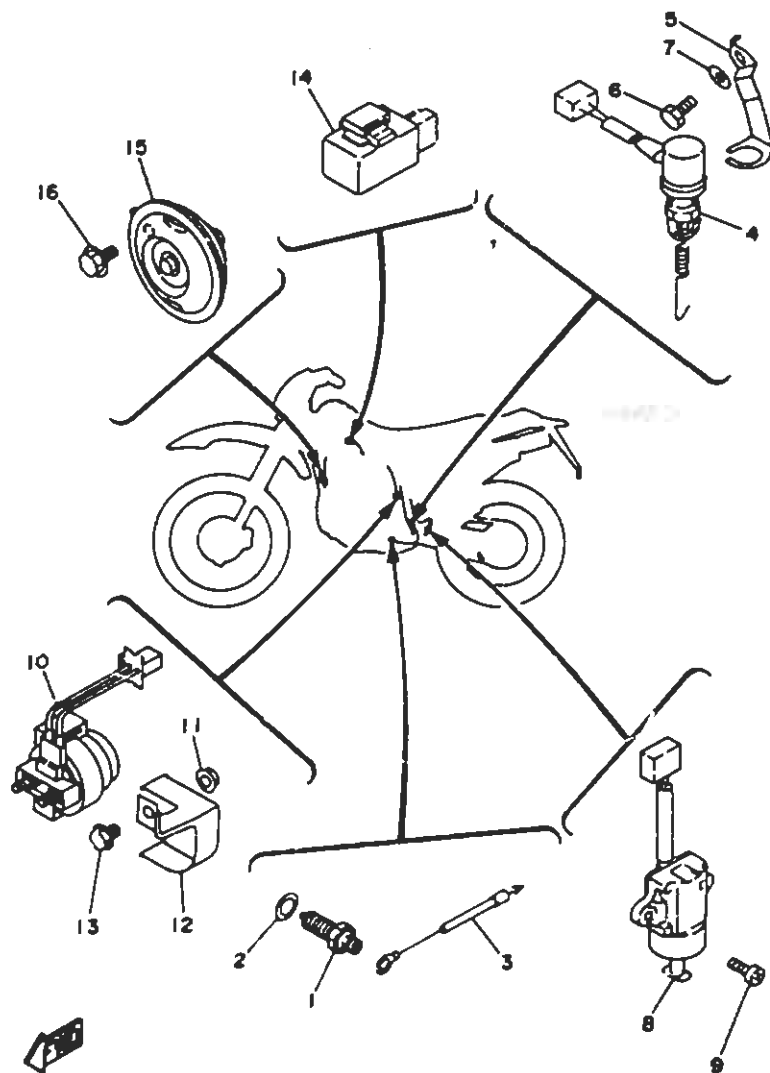


4MP2310-8410

FIG. 41 ELECTRICAL 1

REF. NO.	PART NO.	DESCRIPTION	Q'TY	REMARKS
29	90464-20191	CLAMP	2	
30	90464-12200	CLAMP	1	
31	1UA-B2591-00	CLAMP	4	
32	90446-15377	HOSE	1	
33	90446-15376	HOSE	1	
34	90464-14117	CLAMP	1	

E10



4MR2310-6420

FIG. 42 ELECTRICAL 2

REF. NO.	PART NO.	DESCRIPTION	Q'TY	REMARKS
1	4GY-82540-10	NEUTRAL SWITCH ASSY	1	
2	90430-10146	GASKET	1	
3	4GY-82509-00	WIRE, SUB LEAD	1	
4	4GY-82530-00	STOP SWITCH ASSY	1	
5	1GY-82539-00	STAY, STOP SWITCH	1	
6	97017-06016	BOLT	1	
7	92907-06600	WASHER, PLATE	1	
8	3LD-82566-3D	SWITCH, SIDE STAND	1	
9	98507-05014	SCREW, PAN HEAD	2	
10	35X-81940-00	STARTER RELAY ASSY	1	
11	95707-06500	NUT, FLANGE	2	
12	4GY-81953-00	STAY, RELAY	1	
13	95D27-06012	BOLT, FLANGE	1	
14	3TY-83350-00	FLASHER RELAY ASSY	1	
15	3FW-83371-00	HORN	1	
16	9C317-06012	BOLT, FLANGE	1	

E11



# CONTENTS

## ENGINE

Cylinder Head.....	B2
Cylinder.....	B3
Crankshaft, Piston.....	B4
Valve.....	B5~B6
Camshaft, Chain.....	B7
Oil Pump.....	B8
Intake.....	B9~B10
Carburetor.....	B11~B12
Exhaust.....	B13
Crankcase.....	B14
Crankcase Cover 1.....	B15~C2
Starter Clutch.....	C3
Clutch.....	C4
Transmission.....	C5
Shift Cam, Fork.....	C6
Shift Shaft.....	C7

Rear Wheel.....	D10
Rear Brake Caliper.....	D11
Steering Handle, Cable.....	D12
Front Master Cylinder.....	D13
Stand, Footrest.....	D14
Rear Master Cylinder.....	D15
Generator.....	E2
Starting Motor.....	E3
Flasher Light.....	E4
Meter.....	E5
Headlight.....	E6
Taillight.....	E7
Handle Switch, Lever.....	E8
Electrical 1.....	E9~E10
Electrical 2.....	E11

## CHASSIS

Frame.....	C8~C9
Fender.....	C10
Side Cover.....	C11
Rear Arm.....	C12~C13
Rear Suspension.....	C14
Steering.....	C15~D2
Front Fork.....	D3~D5
Fuel Tank.....	D6
Seat.....	D7
Front Wheel.....	D8
Front Brake Caliper.....	D9

## INDEX

Numerical Index.....	M1~M4
----------------------	-------

NUMERICAL INDEX

GRID NO.	PART NO.	GRID NO.	PART NO.	GRID NO.	PART NO.	GRID NO.	PART NO.	GRID NO.	PART NO.	GRID NO.	PART NO.
B-13	4GY-12121-00	B-5	14Y-14104-00	B-11	4GY-14711-02	B-13	4GY-17261-01	C-5	4RR-22128-00	C-12	
B-15	1MG-12153-21	B-6	4GY-14105-00	B-11	4EL-14714-00	B-13	4GY-17402-00	C-5	5X6-22141-01	C-12	
B-9	1MG-12153-31	B-6	4GY-14107-00	B-11	4BD-14766-00	B-13	4GY-17411-00	C-5	4RR-22143-00	C-12	
D-1	3LD-12168-A0	B-5	5HO-14126-00	B-12	4GY-14799-00	B-13	4GY-17460-00	C-5	4GY-22151	C-12	
D-9	3LD-12168-F0	B-5	1HY-14147-00	B-11	4GY-1490J-00	B-11	4GY-18101-00	C-7	4GY-22165-00	C-12	
D-11	3LD-12168-H1	B-5	3YF-14149-00	B-12	3GY-1490K-00	B-11	4GY-18102-00	C-7	4GY-2217A-00	C-12	
D-9	3LD-12168-K1	B-5	4GY-14149-00	B-12	4GY-1490X-00	B-12	4GY-18110-00	C-7	4GY-2217F-00	C-13	
D-11	3LD-12168-M1	B-5	4GY-14149-10	B-12	4GY-14940-00	B-12	1MG-18113-00	C-7	4GY-22177-00	C-12	
D-11	3LD-12168-R1	B-5	4GY-14149-20	B-12	4GY-14958-00	B-12	4GY-18120-00	C-7	4ES-22178-00	C-9	
D-9	3LD-12168-U1	B-5	4GT-14153-00	B-11	5HO-14991-00	B-12	4GY-18140-00	C-7	4EW-22178-00	C-9	
B-4	3LD-12168-W1	B-5	3YF-14159-00	B-12	4RR-15100-00	B-14	4GY-18511-00	C-6	29L-22184-00	C-12	
C-10	3LD-12168-Y1	B-5	24W-14193-00	B-12	4GY-15118-00	B-15	4GY-18512-00	C-6	30X-2219X-00	C-12	
C-11	3LD-12168-00	B-5		B-12	55X-15167-00	C-3	4GY-18513-00	C-6	4RR-22199-00	C-12	
C-11	3LD-12168-20	B-5	3YF-14196-00	B-12	3Y1-15361-00	C-2	4GY-18531-00	C-6	4GY-22210-12-PO	C-14	
B-2	3LD-12168-40	B-5	1JX-14197-00	B-12	4GY-15370-00	B-9	4GY-18540-00	C-6	38V-22211-00	C-14	
B-2	3LD-12168-60	B-5	4GY-14198-00	B-11	4GY-1541E-00	B-15	136-18542-00	C-6	4GY-22212-01-PO	C-14	
B-2	3LD-12168-80	B-5	4GY-14272-00	B-12	4GY-15411-02	B-15	4GY-21105-00-PO	C-8	3LO-22214-01	C-14	
B-2	3LD-12169-E0	B-5	6G8-14275-00	B-12	4GY-15415-01	C-2	4GY-21107-00	C-9	4GY-22219-00	C-14	
B-2	3LD-12169-G0	B-5	4GY-14276-00	B-12	4GY-15421-00	B-15	4RR-21110-00-PO	C-8	3XP-22224-00	C-14	
B-2	3LD-12169-J0	B-6	4GY-14292-00	B-11	4GY-15431-00	B-15	4RR-2117F-00	C-9	3SP-22241-00	C-14	
B-9	3LD-12169-L0	B-6	4GY-14293-00	B-11	4GY-15441-00	B-14	4RR-2117M-00	C-9	4GY-22261-00	C-14	
B-2	3LD-12169-M0	B-6	4GY-14301-20	B-11	4GY-15441-00	B-15	1JX-21268-00	C-9	34K-22311-01	C-12	
B-2	3LD-12169-T0	B-6	4GY-14312-40	B-11	4GY-15461-00	B-15	4GY-2127A-00	D-7	3XJ-22475-00	C-13	
B-2	3LD-12169-11	B-5	4GY-14326-00	B-11	4GY-15512-01	C-3	26H-21308-00	C-9	4GY-22898-50	D-11	
B-2	3LD-12169-31	B-5	4GY-14329-74	B-11	4GY-15515-00	C-3	4GY-21315-00	C-8	4GY-23102-01	D-3	
B-3	3LD-12169-50	B-5	4RR-14341-00	B-11	4GY-15517-01	C-3	4GY-21317-00	C-8	4GY-23103-01	D-3	
B-3	3LD-12169-70	B-5	43F-14342-25	B-11	4GY-15521-00	C-3	4GY-21318-01	C-8	4GY-23110-00	D-3	
B-4	3LD-12169-90	B-5	4GY-14384-00	B-11	4GY-15590-00	C-3	4GY-21319-00	C-8		D-4	
B-4	4GY-12171-00	B-7	2JM-14385-00	B-11	4GY-16111-00	C-4	1HX-2135F-10	C-13	2VM-23111-10	D-3	
B-4	4GY-1454-00	B-7	6E5-14386-01	B-11	4GY-16150-00	C-4	4GY-21365-00	C-11		D-4	
B-4	3GC-12210-10	B-7	5Y1-14397-00	B-12	30X-16154-00	C-4	22F-2139X-00	C-12	4GY-23118-01	D-3	
B-4	4BE-12213-00	B-7	4GY-14401-00	B-9	3XJ-16321-00	C-4	4GY-21471-00	C-8	4GY-21471-00	D-4	
B-4	4GY-12241-00	B-7	4GY-14412-00	B-9	3XJ-16324-00	C-4	4RR-21485-00	C-9	55Y-2312G-M0	D-3	
B-4	4GY-12251-00	B-7	4GY-14413-00	B-9	4GY-16351-00	C-4		C-9		D-4	
B-4	4GY-12252-00	B-7	29K-14425-00	O-6	4DM-16356-00	C-4	4GY-21486-00	C-8	3XJ-23125-10	D-3	
B-4	296-13147-00	C-3	3AJ-1443E-00	B-9	4GY-16357-00	C-4	4GY-21511-00	C-10		D-4	
B-4	4GY-13151-00	B-8	4GY-1443E-00	B-9	1M1-16358-01	C-4	4GY-21642-00	C-10	4GY-23126-00	D-3	
B-4	4GT-13161-00	B-8	4GY-14437-00	B-9	4GY-16371-01	C-4	4RR-2165A-00	C-10	4GY-23136-00	D-3	
B-4	4GY-13300-00	B-8	1LM-14451-00	B-9	4GY-16380-01	C-4	3XV-21717-00	E-10	4GY-2314A-01	D-3	
B-4	4GY-13326-00	B-8	4GY-14453-00	B-9	51Y-17121-00	C-5	4RR-2173E-00	E-11		O-4	
B-4	4GY-13329-00	B-8	4GY-14458-00	B-9	4GY-17131-00	C-5	4RR-2173F-00	C-11	4GY-23141-00	O-3	
B-4	22F-13411-00	B-8	4GY-14459-00	B-9	55V-17151-02	C-5	4GY-2174A-00	C-11		D-4	
B-5	1UY-13440-02	B-8	1LM-14462-00	B-9	4GY-17161-01	C-5	4GY-2174T-00	C-11	4V4-23142-10	D-3	
B-5	4GY-13447-00	B-8	1YJ-14462-00	B-9	4GY-17211-00	C-5	4GY-21746-00	C-11		D-4	
B-5	4GY-13490-00	B-8	4GY-14485-00	B-10	4GY-17221-00	C-5	4GY-21747-00	C-11	2VM-23144-10	D-3	
B-5	4GY-13586-00	B-9	4GY-14611-01	B-13	4GY-17231-00	C-5	2TK-21757-00	B-9		D-4	
B-5	4GY-13591-00	B-9	4FM-14613-00	B-13	4GY-17241-00	C-5	4GY-2177G-00	C-11	2VM-23145-10	D-3	
B-5	2KF-1410A-00	B-11	4GY-14628-00	B-13	4GY-17251-00	C-5	4RR-22110-00	C-12		D-4	

M1



NUMERICAL INDEX

PART NO.	GRID NO.	PART NO.	GRID NO.	PART NO.	GRID NO.	PART NO.	GRID NO.	PART NO.	GRID NO.	PART NO.	GRID NO.
4V4-23146-L0	D-3	4H7-24181-00	D-6	3SP-25919-01	D-9	4GY-82100-00	E-9	4GY-8354W-00	E-5	90105-10745	I-1
	D-4	1KH-24182-00	D-6	4GY-25919-50	D-11	4RR-82115-00	F-9	4GY-83586-20	E-5	90106-08053	L-1
3J2-23147-00	D-3	30X-24183-01	D-6	3SP-25924-51	D-11	4GY-82116-00	E-9	4GY-83755-01	E-5	90109-062A8	E-1
	D-4	31B-24185-00	D-7	3GD-25933-00	D-9	4GY-82119-00	E-9	4GY-83912-00	E-8	90109-063F7	C-7
4V4-23153-L0	D-3	30X-24186-01	D-6	4GY-26111-00	0-12	4GY-82123-00	C-11	55Y-83922-00	E-8	90109-064A5	C-10
	D-3	4GY-24187-00	D-6	4RR-26129-00	0-12	120-82131-00	C-9	437-83936-01	E-8	90109-06418	B-7
2HM-23158-L0	D-3	4GY-24188-00	D-6	3BN-26141-20	D-12	133-82131-00	E-9		E-9	90109-06419	B-8
	D-4	4RR-2424D-00	D-6	3BN-26142-20	D-12	4RR-82150-00	E-9	4RR-83972-00	E-8	90109-065F3	D-9
4GY-2316A-01	D-3	23F-24500-01	D-6	4GY-25241-00	0-12	36Y-82151-00	E-9	4GY-83975-00	E-8		D-11
	D-4	4XB-24512-00	D-6	4GY-26242-00	0-12	1UY-82310-41	E-9	2UJ-83980-00	E-8	90109-066F0	B-2
3XJ-23167-L0	D-4	3AJ-24523-00	D-6	3YI-26243-01	D-12	1LN-82370-00	E-9	3K7-84154-10	D-2	90109-06605	B-2
4GY-23170-00	D-3	3AJ-24534-00	D-6	3YI-26249-00	D-12	4GY-82505-00	E-9	2RR-84178-00	E-6	90109-06729	E-8
	D-4	214-24535-00	B-11	4GY-26279-00	C-15	4GY-82509-00	E-11	3XP-84196-00	E-6	90109-0R2G0	B-13
3XJ-23171-L0	D-3	11H-24602-03	D-6	34K-26281-00	D-12	4GY-82510-00	E-9	4GY-84311-00	E-6	90110-06091	C-3
	D-4	4GY-24730-10	D-7	1VJ-26282-00	D-12	4GY-82530-00	E-11	3FW-84314-00	E-6	90110-06224	B-15
2VM-23173-L0	D-3	4GY-24731-00	D-7	4GY-26302-01	D-12	4GY-82539-00	E-11	4GY-84320-00	E-6		A-15
	D-4	3LD-25104-00	D-8	4GY-26335-01	D-12	4GY-82540-10	E-11	55U-84328-00	E-6	90110-08071	L-10
4GY-23174-00	C-15	4GY-25111-00-35	D-8	1E6-26342-00	0-12	3LD-82566-30	E-11	4GY-84332-00	E-6	90111-1000B	D-14
2VN-23185-L0	D-3	4GY-25181-00	D-8	4GY-27200-00	0-14	4GY-82568-01	E-9	50W-84334-00	E-6	90116-1057B	B-2
	D-4	2VW-25304-00	0-10	4GY-27217-00	D-14	4RR-82590-00	E-9	55U-84337-00	E-6	90119-26763	C-10
3XP-23188-00	D-3	4GY-25311-00-35	D-10	4GY-27222-00	D-15	1UA-82591-00	E-10	3FW-84340-00	E-6	90119-06094	C-11
	D-4	4GY-25381-00	D-10	55Y-27242-00	D-14	12R-82591-00	E-9	4GY-84710-00	E-7	90119-06C96	C-10
4V4-23188-L0	D-3	3BN-25388-00	D-10	4GY-27311-01	0-14	1LN-82911-00	E-8	31L-84714-00	E-7		C-12
	D-4	3BN-25389-00	D-10	4GY-27315-00	D-14	33G-82913-00	E-8	4GY-84723-00	E-7	90119-06097	B-10
234-23190-L0	D-3	39X-25394-00	D-10	4DA-27411-00	D-14	4GY-82917-00	E-8	4GY-84733-00	E-7	90119-06118	C-9
	D-4	2YY-25444-01	D-10	4GY-27421-00	D-14	3XP-83310-00	E-4	851-84744-00	F-4	90119-06194	C-10
4GY-23191-10	D-4	4GY-2580T-01	D-9	4GY-27422-00	D-14	4AY-83310-10	E-4		F-4	90119-06203	C-12
4GY-23192-00	C-15	4GY-2580W-00	D-11	4GY-27491-00	D-11	2T4-83312-00	E-4		F-4	90123-08046	E-8
43M-23192-L0	0-4	3PA-2582A-50	D-15	4GY-28100-00	C-9		E-4	4GY-85540-00	E-9	90143-06024	E-8
4RR-2331E-00	D-5	3XP-2582T-00	D-9	4K5-2814E-10	C-11		E-4	90101-06664	C-11	90149-06011	D-6
4RR-23340-00	0-5	4GY-2582W-00	D-11	4U7-28186-00	C-11	4GY-83318-00	E-4	90105-05361	C-15	90149-06154	C-9
3XJ-23357-L0	D-3	4GY-25827-50	D-11	1HX-28227-00	0-2	4GY-83320-00	E-4		D-5	90149-06228	E-9
	D-4	4GY-2583V-00	D-15	4GY-28267-00	C-9	1KN-83321-00	E-4	90105-06384	B-2	90149-08067	C-4
4GY-23389-00	C-15	4FU-25844-00	D-15	4RR-2831V-00	C-15		E-4	90105-06406	B-3	90150-06021	C-9
	D-5	3XP-25852-50	0-15	4RR-2832V-00	C-15		E-4	90105-06553	B-8		C-9
5Y3-23393-00	0-4	4GY-25852-00	D-13	4GY-28386-00	B-9		E-4		B-15	90150-06031	C-11
4GY-23397-20	D-2	2VM-25854-00	D-15	4RR-28391-00	E-6	4GY-83328-00	E-4	90105-06717	E-3	90150-06036	C-11
2A6-23408-00	C-15	3RW-25854-00	0-13	4GY-81410-01	E-2	1KN-83345-00	E-4	90105-07385	B-7	90153-06045	B-9
4GY-23416-00	C-15	2VN-25855-00	0-15	4RR-81450-00	E-2		E-4	90105-10050	C-8	90154-05004	B-9
4GY-23418-00	C-15	2VN-25866-00	D-15	4GY-81800-01	E-3		E-4	90105-10183	C-8	90159-05011	E-4
4RR-23435-00	C-15	56A-25867-00	0-13	4GY-81815-01	E-3		E-11	90105-10232	C-8		E-4
1E6-23441-10-35	C-15	4GY-25870-01	0-13	3WP-81826-00	E-3	3TY-83350-00	E-11	90105-10316	0-9		E-4
3SR-23442-01	C-15	4CY-25872-11	0-13	3KS-81840-00	E-3	4GY-83368-00	E-4	90105-10430	B-4		E-4
4GY-23472-00	C-15	4GY-25873-01	0-15	11H-81844-00	E-3	4GY-83371-00	E-11	90105-10444	C-8	90159-06010	C-4
4GY-23484-00	C-15	2VM-25876-00	D-15	26H-81847-00	E-3	4GY-83500-21	E-5	90105-10608	B-2	90159-06056	B-9
3LD-23489-00	D-4	3ET-25888-00	D-15	35X-81940-00	E-11	4GY-83513-00	E-5	90105-10609	C-8	90159-06189	E-6
4GY-24110-00-03	D-6	2VN-25894-00	D-15	4GY-81953-00	E-11	4GY-83519-21	E-5	90105-10614	C-14	90170-06010	F-8
22W-24181-00	B-13	4GY-25895-00	0-15	3TJ-81960-01	E-9	4CY-83523-00	E-5	90105-10728	D-14	90170-08152	C-9



NUMERICAL INDEX

PART NO.	GRID NO.	PART NO.	GRID NO.	PART NO.	GRID NO.	PART NO.	GRID NO.	PART NO.	GRID NO.	PART NO.	GRID NO.
90170-16182	C-4	90215-16286	C-4	90413-07007	B-12	90501-23763	E-4	92907-05100	E-8	93310-22500	C-3
90170-16326	C-4	90215-16289	C-4	90430-06014	B-7	90502-09024	C-15	92907-05200	B-9	93310-63207	B-4
90171-18053	D-10	90215-23265	C-5		B-8	90506-20369	D-14		E-5	93315-11206	C-3
90179-08148	E-8	90240-08120	D-15		B-14	90506-35473	D-14	92907-06200	C-4		C-4
90179-08410	B-13	90240-10117	D-14	90430-06156	B-8	90508-09420	C-7	92907-06600	B-7	93315-22251	C-12
90179-10665	C-13	90254-07017	B-4	90430-06226	C-2	90508-14352	D-14		C-15	93315-32052	C-13
90179-12666	C-13	90267-32071	C-8	90430-10148	C-8	90508-14525	C-7		D-12	93315-32053	C-12
90179-18552	C-5	90269-04003	D-2	90430-10171	B-8	90508-206A6	E-4		D-12	93332-00078	C-15
90179-24542	C-15	90280-07055	C-4	90430-12213	B-8	90508-26561	C-7		E-5	93399-99935	C-13
90179-28543	C-15	90280-16053	B-4		B-14	90508-284A7	D-14		E-9	93399-99936	C-14
90185-14070	C-13	90338-07124	D-14	90445-100E9	D-6	90508-28777	D-14		E-9	93410-17037	C-5
90185-16127	C-12	90338-09012	D-12	90446-15376	E-10	90508-32682	C-7		E-11	93410-22039	C-5
90201-03311	C-8		D-12	90446-15377	E-10	90560-15240	D-8	92990-04100	B-11		C-5
90201-05033	E-5	90338-18067	B-7	90460-52210	B-9	90560-17265	C-3	92990-10200	D-14	93410-26067	C-5
90201-06057	E-7	90340-12059	B-14	90460-55233	C-14	90560-20278	D-10	92990-12200	C-15	93440-09141	B-2
90201-06778	C-13	90340-12065	B-8	90460-58015	B-10	91317-05012	B-15	93101-14164	B-15	93440-30112	C-13
90201-08086	C-8	90340-14128	B-15	90462-08225	B-14		E-2	93102-12224	C-4		C-14
90201-08087	B-8	90340-20143	C-2	90462-10215	B-14	91317-05025	E-2	93102-11209	C-7	93450-19052	B-4
	C-4	90340-32126	B-15	90462-12195	D-15	91317-06012	D-5	93102-25226	C-5	93511-32027	C-4
	B-13	90387-05285	E-4	90464-05188	E-9	91317-06016	B-15	93106-15034	B-15	93605-10090	B-2
90201-08326	C-9		E-4	90464-08189	E-9	91317-06020	B-8	93106-20021	D-8	93608-43228	C-7
90201-086P8	C-14		E-4	90464-10193	D-12		B-9	93106-22032	D-8	94130-2105H	O-8
90201-08759	B-3		E-4	90464-14117	E-10	91317-06025	B-7	93106-28023	D-10	94146-1805J	D-10
90201-094G1	D-13	90387-060N3	C-12	90464-15192	E-9		B-15	93108-35004	C-12	94212-18188	O-10
90201-10118	D-15	90387-06216	C-9	90464-15195	E-9	91317-06030	B-14	93109-20029	C-12	94227-21123	O-8
	B-2	90387-064J1	C-10	90464-15200	E-10		B-15		C-13	94330-21084	O-8
90201-10209	B-4	90387-065L5	E-7	90464-20191	E-10	91317-06035	B-15	93210-07135	B-8	94340-18086	O-10
90201-102R1	C-13	90387-06500	D-12	90465-08358	E-2	91317-06040	B-15	93210-10096	B-8	9441C-21518	O-8
90201-106F2	C-7	90387-06648	C-10	90465-12373	B-15		B-15	93210-14369	B-15	94421-18519	D-10
90201-12474	C-13	90387-06681	C-10	90465-16258	D-5	91317-06045	B-14	93210-15620	D-15	94581-51196	O-10
90201-14740	C-12	90387-06737	B-10	90467-09006	D-6		B-15	93210-19123	C-2	94591-43122	B-7
90201-164H4	C-13	90387-068M4	C-9	90467-11044	D-15	91317-06050	C-2	93210-32172	B-15	94701-00318	B-2
	C-5	90387-087L0	E-9	90467-11106	B-9	91317-06070	B-8	93210-40659	B-9	94701-00319	B-2
90201-177G4	D-10	90387-100Y3	C-14	90467-12052	D-14		B-14	93210-54175	B-8	95028-08035	C-15
90201-204M9	C-3	90387-1003G	D-14		B-2	91401-25020	D-14	93210-74M35	C-2	95028-08040	O-5
90201-25291	C-12	90387-103X9	C-13	90467-15012	B-9		D-15	93210-78544	B-3	95027-06010	C-12
90201-254H8	C-15	90387-1501X	D-8	90468-10050	E-5	91401-25030	D-10	93300-60804	D-10	95027-06012	O-15
90201-282R3	D-2	90387-156R7	D-8	90468-15064	B-12	91490-20020	D-14	93306-00316	D-14		E-11
90201-284R9	D-6	90387-1606R	C-12	90480-10068	D-8	91690-60016	D-11	93306-00320	D-11	95027-06016	O-11
90202-05187	C-15	90387-164M2	C-13		D-10	91701-06022	D-14	93306-07202	D-14	95027-06025	O-13
90202-28216	B-13	90387-166X1	C-12	90480-12320	C-11	92017-06016	C-2	93306-20226	C-2	95027-06050	C-12
90206-06090	C-15	90387-2001U	O-10		C-11	92017-08016	D-15	93306-20332	D-15	95027-0804N	B-13
90208-04029	B-2	90387-2001V	C-10	90480-13018	C-11	92901-04100	B-11	93306-20427	B-11		C-15
90209-11262	C-5	90401-08133	B-8	90480-13428	B-10		B-11	93306-20529	E-6	95027-08060	C-9
90209-18208	C-5	90401-10159	B-8	90480-14023	C-10	92901-04600	E-6	93306-30210	D-4	95307-06600	C-4
	C-5		O-13	90480-24222	E-9	92901-06600	D-4	93306-37802	B-4	95307-10700	E-5
90209-23241	B-4		D-15	90501-10312	E-8	92901-08600	O-15	93306-37604	B-4	95317-08600	O-15
90209-32328	C-4	90401-14163	C-13	90501-22721	B-4	92907-05100	E-5	93310-212R6	C-3	95337-08600	B-3

M3



NUMERICAL INDEX

PART NO.	GRID NO.	PART NO.	GRID NO.	PART NO.	GRID NO.	PART NO.	GRID NO.	PART NO.	GRID NO.
95607-05100	B- 9	98507-05018	E- 8						
95607-06200	C-10	98507-05020	D-12						
95617-06100	D-12		E- 8						
	E- 8	98507-05025	D-12						
	E- 8	98507-05030	E- 8						
95617-08200	C- 8	98507-06008	B- 7						
	C- 8	98507-05010	B-14						
	D-10	98507-06035	B- 8						
95617-08325	B- 2		D-12						
95617-10100	D-14	98517-06020	E- 9						
95617-10200	C- 8	98517-06030	E- 9						
	C- 8	98580-04008	B-11						
	C- 8	98580-04016	B-11						
	C- 8	98580-04055	E- 6						
	C-14	98707-04012	D-13						
95617-12100	C-15	98980-06010	B-13						
95707-06500	E- 7	99001-09600	C- 7						
	E-11	99009-11400	B- 8						
95707-08500	E- 4	99009-17400	C- 3						
95807-06014	D-15	99009-20500	C- 4						
95807-06016	D- 7	99247-00080	C-10						
95817-06012	C- 8	99510-08016	B- 2						
	C- 8	99530-10014	B-14						
	O- 6		B-15						
	E-11		B-15						
95817-06016	B-14		B-15						
95817-08016	C- 8	99530-14016	B- 3						
	O- 7		B-14						
95817-08055	C- 8								
95817-08070	C- 8								
95817-10016	C-13								
95817-12016	C-13								
97017-06016	B- 7								
	C-10								
	E-11								
97027-06012	C-15								
97027-06020	C- 7								
97027-06030	E- 5								
97706-40530	E- 7								
97707-50510	C-15								
93501-04006	B-11								
98503-03008	D- 6								
98503-04014	B-11								
98507-04018	D- 5								
98507-05010	B- 2								
	C-12								
98507-05014	E-11								
98507-05016	E- 5								

M4